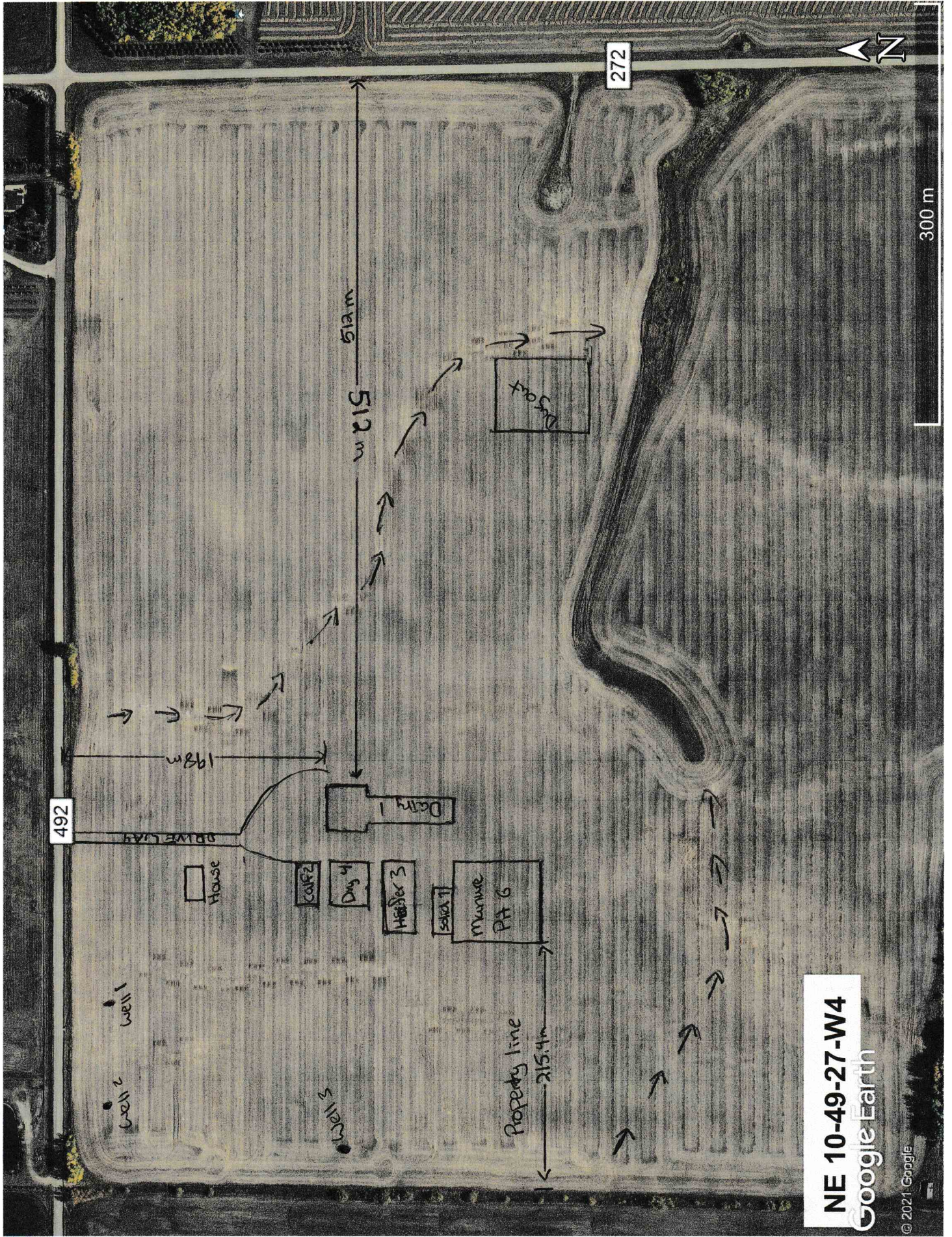


Mr Goff,

Attached you will find a more detailed map of Alieda Farm's proposed site layout to address your location concerns.

Our manure pit will be constructed in accordance with NRCB regulations. This includes a 1 m high berm to control any run off and a liner to control seepage.

Cameron and Deanna DeWit
Alieda Farms



492

272

well 1
well 2
wells

House

Dairy 2

Dairy 3

Dairy 4

Dairy 5

Dairy 6

Dairy 7

Dairy 8

Dairy 9

Dairy 10

Dairy 11

Dairy 12

Dairy 13

Dairy 14

Dairy 15

Dairy 16

Dairy 17

Dairy 18

Dairy 19

Dairy 20

Dairy 21

Dairy 22

Dairy 23

Dairy 24

Dairy 25

Dairy 26

Dairy 27

Dairy 28

Dairy 29

Dairy 30

Dairy 31

Dairy 32

Dairy 33

Dairy 34

Dairy 35

Dairy 36

Dairy 37

Dairy 38

Dairy 39

Dairy 40

Dairy 41

Dairy 42

Dairy 43

Dairy 44

Dairy 45

Dairy 46

Dairy 47

Dairy 48

Dairy 49

Dairy 50

Dairy 51

Dairy 52

Dairy 53

Dairy 54

Dairy 55

Dairy 56

Dairy 57

Dairy 58

Dairy 59

Dairy 60

Dairy 61

Dairy 62

Dairy 63

Dairy 64

Dairy 65

Dairy 66

Dairy 67

Dairy 68

Dairy 69

Dairy 70

Dairy 71

Dairy 72

Dairy 73

Dairy 74

Dairy 75

Dairy 76

Dairy 77

Dairy 78

Dairy 79

Dairy 80

Dairy 81

Dairy 82

Dairy 83

Dairy 84

Dairy 85

Dairy 86

Dairy 87

Dairy 88

Dairy 89

Dairy 90

Dairy 91

Dairy 92

Dairy 93

Dairy 94

Dairy 95

Dairy 96

Dairy 97

Dairy 98

Dairy 99

Dairy 100

DRIVEWAY

198m

512m

512m

Property line
215.4m

Dairy 1

Dairy 1

NE 10-49-27-W4

Google Earth

© 2021 Google

300 m

