

Francisco Echegaray
NRCB Approval Officer
Red Deer, AB
francisco.echegaray@nrcb.ca

RE: Darcor Holsteins Inc.
Application RA22027
NE 14-047-23W4

April 25, 2023

Hi Francisco,

Thank you for your April 4 requests for me to provide distance measurements regarding this site.

The first request is to measure 1600m (1.6km, 1 mile) from the northeast corner of the NE 14-047-23 W4 relative to the parcels on the NW 14-047-23 W4 and the SW 14-047-23 W4.

The second request is to measure from the west edge of the NE 14-047-23 W4 to the east edge of the NW 14-047-23 W4 and the northeast corner of the SW 14-047-23 W4.

I reviewed the County of Wetaskiwin's website on April 11, 2023 (<https://app.munisight.com/CountyofWetaskiwin/Content/Site/MainPage.aspx?siteId=1>) because it shows the applicable land locations, property lines, and has a built-in distance measurement tool. All screenshots of the website in the figures are at a 1:10 000 scale.

1.a. Northeast corner of the NE 14-047-23 W4 to the NW 14-047-23 W4

All three land parcels on the NW 14-047-23 W4 are within 1600m (1.6km) of the northeast corner of the NE 14-047-23 W4 (Figure 1).

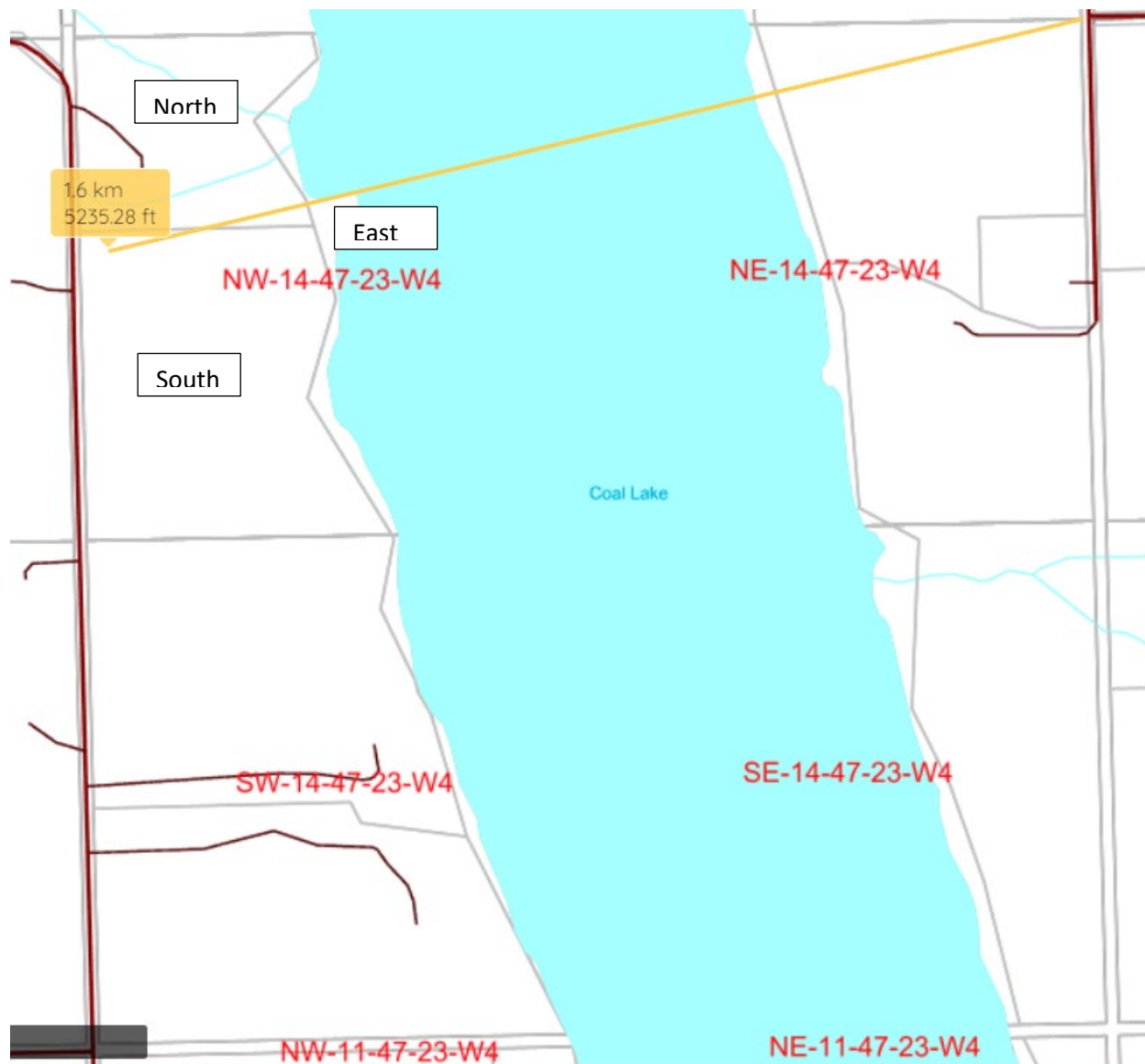


Figure 1. 1600m (1.6km) from the northeast corner of the NE 14-047-23 W4 relative to the three parcels on the NW 14-047-23 W4.

1. b. Northeast corner of the NE 14-047-23 W4 to the SW 14-047-23 W4

Two of the three parcels on SW 14-047-23 W4 (north parcel 56.34 acres and the east parcel 6.4 acres) are within 1600m (1.6km) of the northeast corner of the NE 14-047-23 W4 (Figure 2). The south parcel (59.6 acres) is not within 1600m of the northeast corner of the NE 14-047-23 W4.

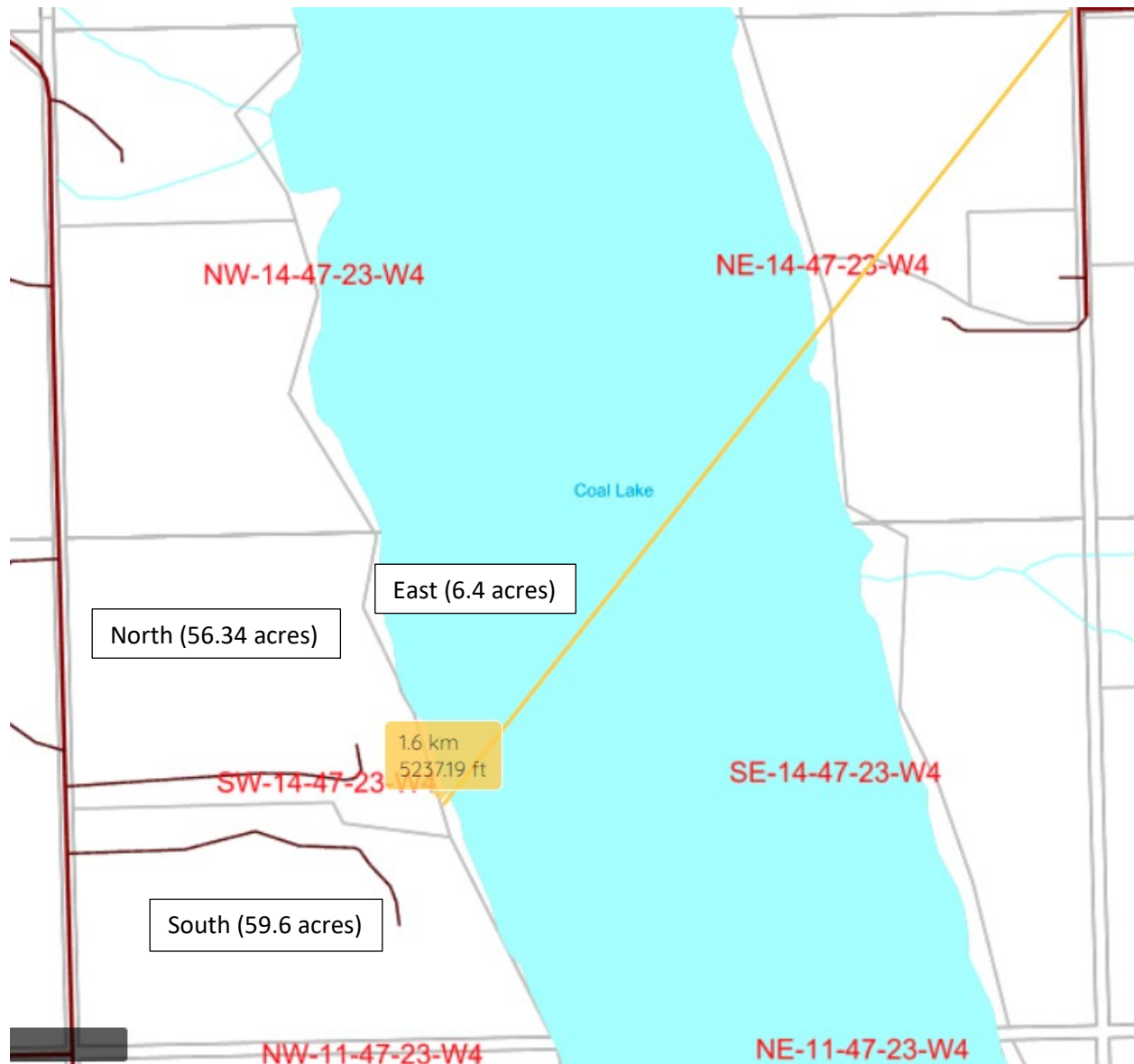


Figure 2. 1600m (1.6km) from the northeast corner of the NE 14-047-23 W4 relative to the three parcels on the SW 14-047-23 W4.

2.a. West edge of the NE 14-047-23 W4 to the east edge of the NW 14-047-23 W4

The site is on the south parcel of the NE 14-047-23 W4, so the measurements will be made from the northwest corner of the south parcel.

There are three parcels on the NW 14-047-23 W4 so a measurement will be made to each of the three parcels (Table 1). Map screenshots are in Appendix A.

Table 1. Distance from the northwest corner of the south parcel of NE 14-047-23 W4

Location on NW 14-047-23 W4	Distance (m)
Closest point of east parcel (12.4 acres) (Figure A1)	756.27
Closest point of north parcel (26.09 acres) (Figure A2)	826.54
One point of south parcel (51.51 acres) (Figure A3)	788.23

Additionally, the distance from the closest point of NE 14-047-23 W4 (south parcel) to the southeast corner of the south parcel of NW 14-047-23 W4 is 745.03m (Figure A4).

2.a. West edge of the NE 14-047-23 W4 to the northeast corner of the SW 14-047-23 W4

The site is on the south parcel of the NE 14-047-23 W4, so the measurements will be made from the southwest corner of the south parcel.


There are three parcels on the SW 14-047-23 W4, so a measurement was made to each of the three parcels (Table 2). Map screenshots are in Appendix A.

Table 2. Distance from the southwest corner of the south parcel of NE 14-047-23 W4

Location on SW 14-047-23 W4	Distance (m)
Closest point of north parcel (56.34 acres) (Figure A4)	745.03
Another point of north parcel (56.34 acres) (Figure A5)	762.34
Closest point of east parcel (6.4 acres) (Figure A6)	738.06
Northeast point of south parcel (59.6 acres) (Figure A7)	817.11

Closure

If you have any questions, please contact me.


Scott (Sheila) Cunningham, P.Eng., P.Ag.
NRCB Environmental Specialist
Red Deer
scott.cunningham@nrcb.ca

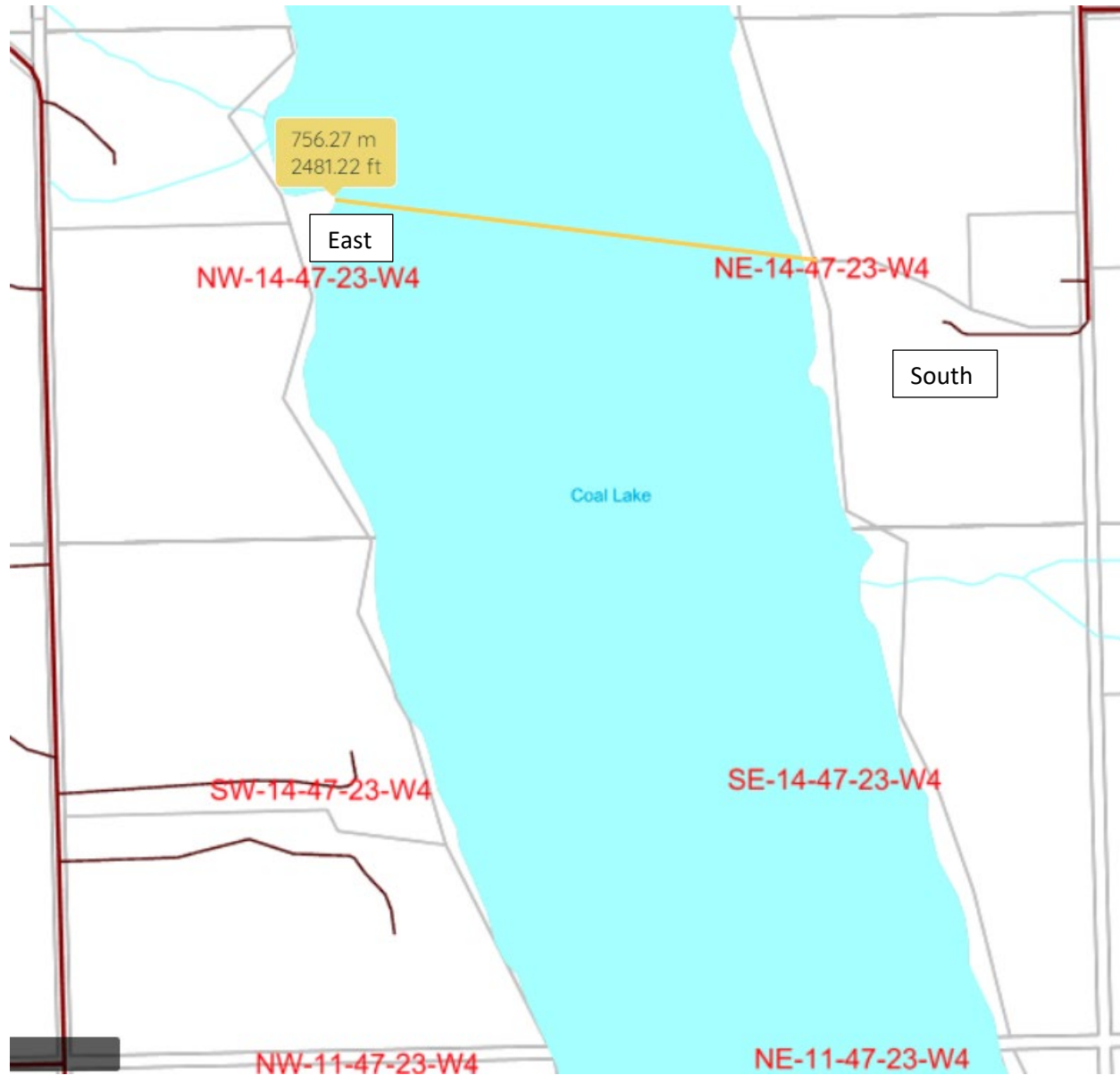


Figure A1. Northwest corner of NE 14-047-23 W4 (south parcel) to closest point of east parcel of NW 14-047-23 W4.

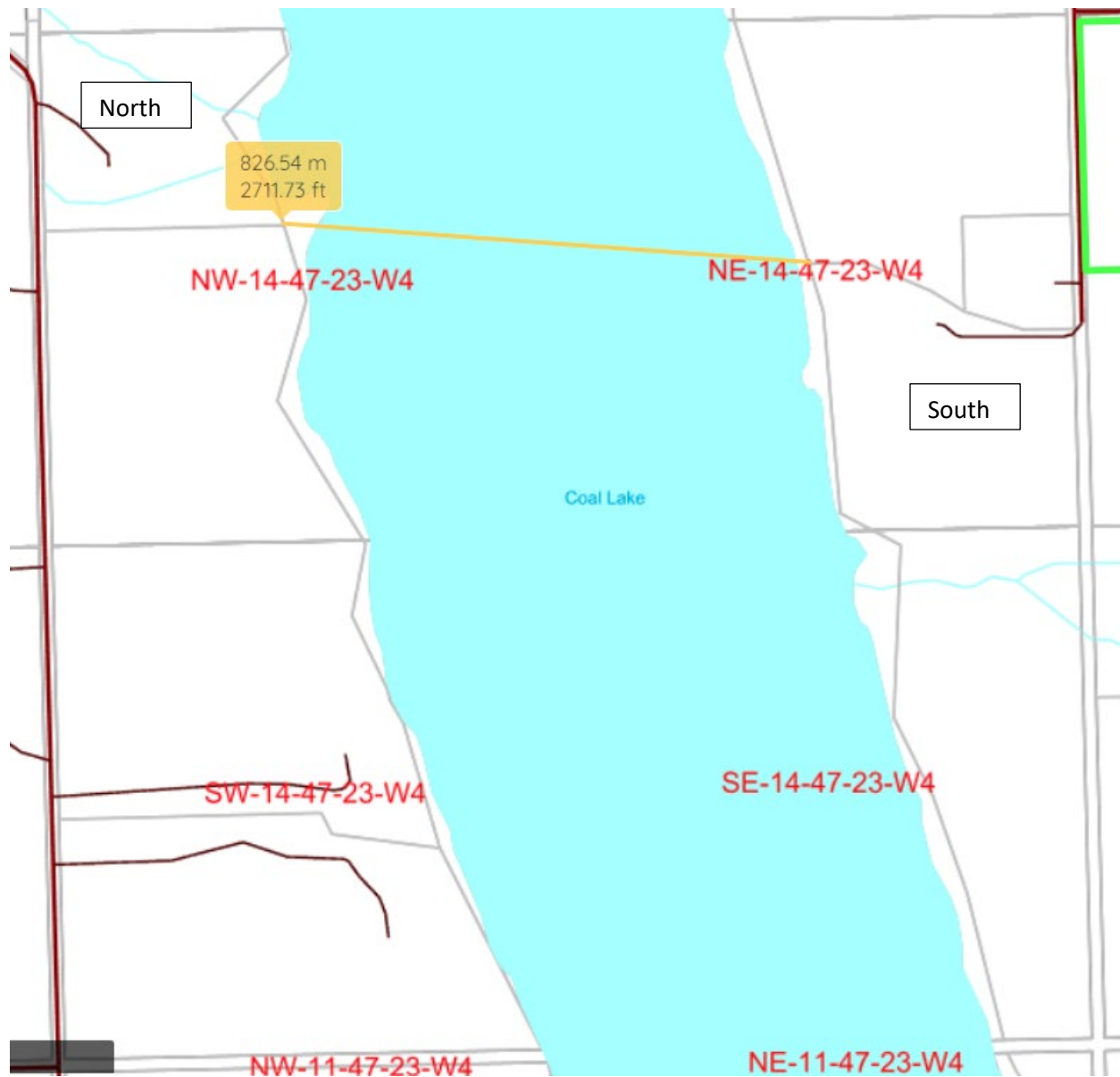


Figure A2. Northwest corner of NE 14-047-23 W4 (south parcel) to closest point of north parcel of NW 14-047-23 W4.

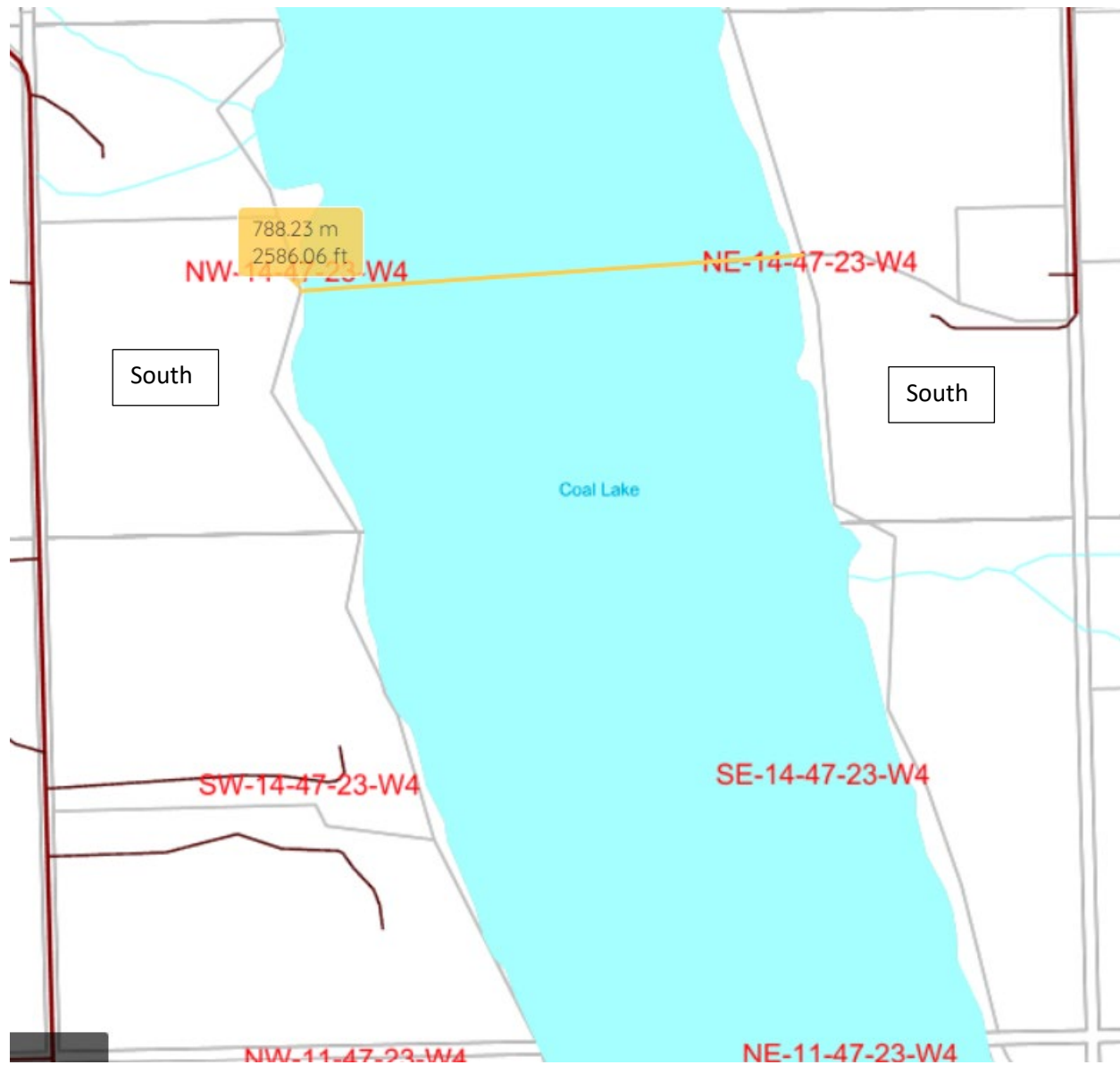


Figure A3. Northwest corner of NE 14-047-23 W4 (south parcel) to one point of south parcel of NW 14-047-23 W4.

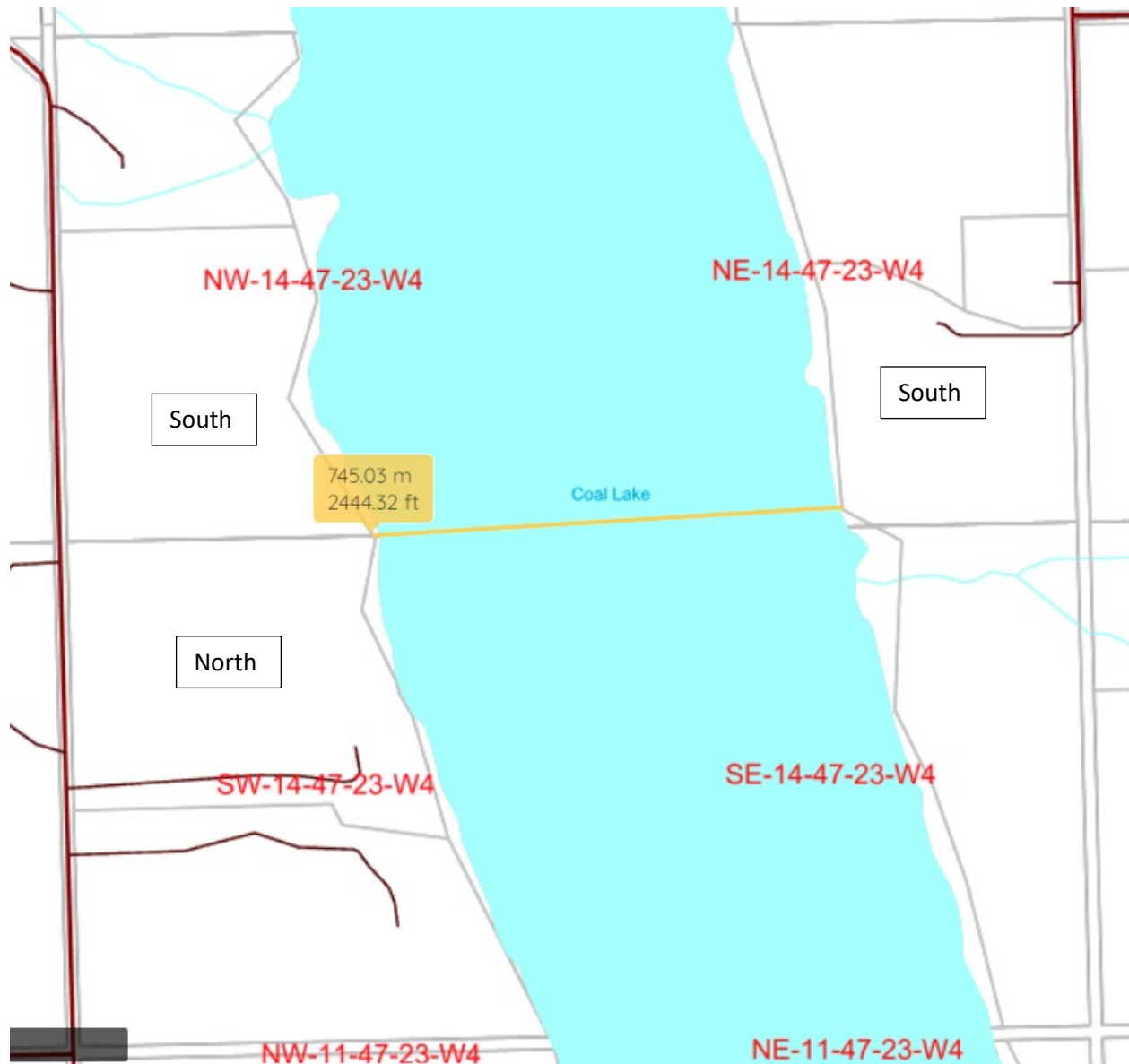


Figure A4. Closest point of NE 14-047-23 W4 (south parcel) to southeast corner of south parcel of NW 14-047-23 W4. This is also the closest point of NE 14-047-23 W4 (south parcel) to northeast corner of north parcel of SW 14-047-23 W4.

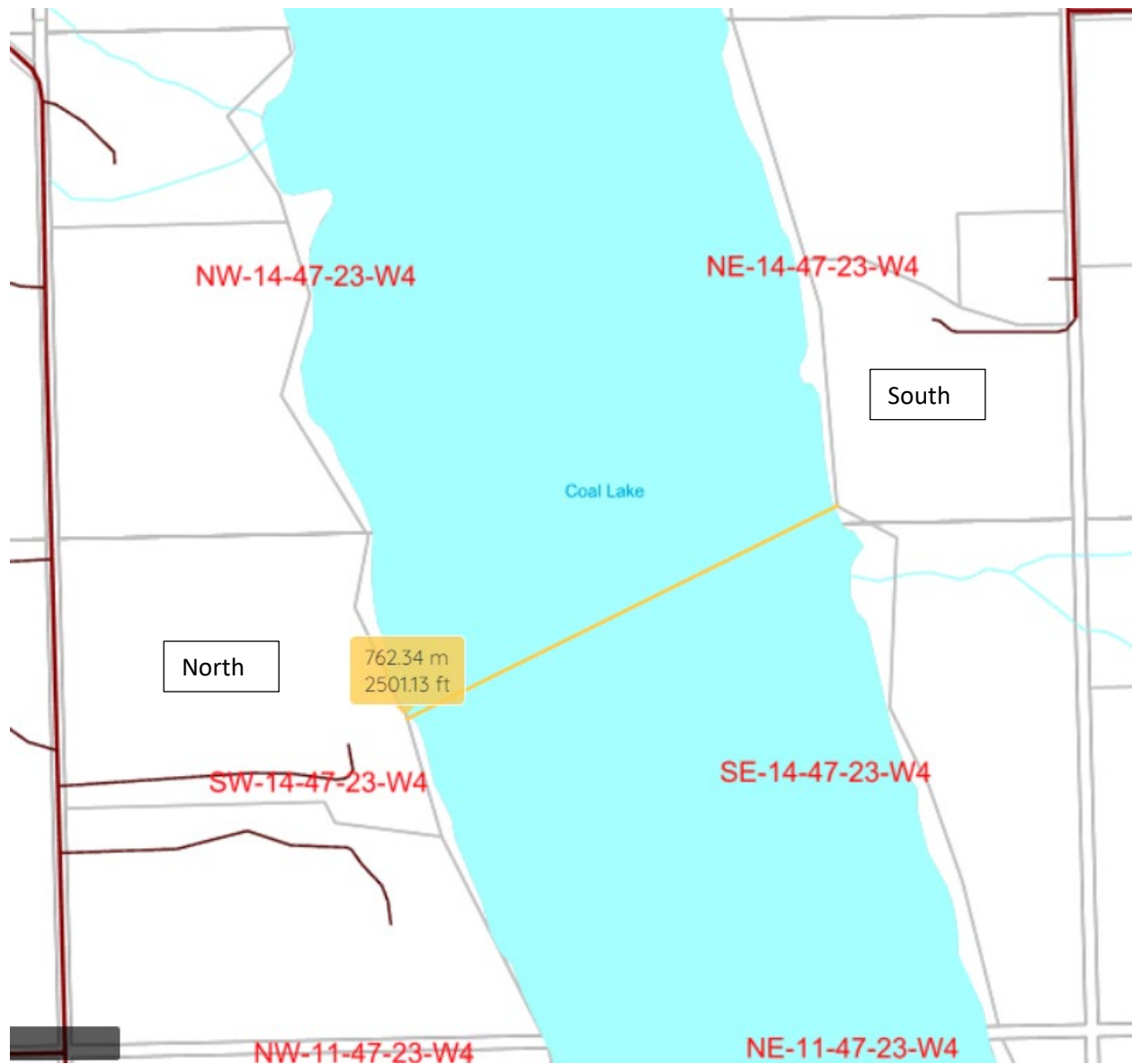


Figure A5. Closest point of NE 14-047-23 W4 (south parcel) to another point of north parcel of SW 14-047-23 W4.

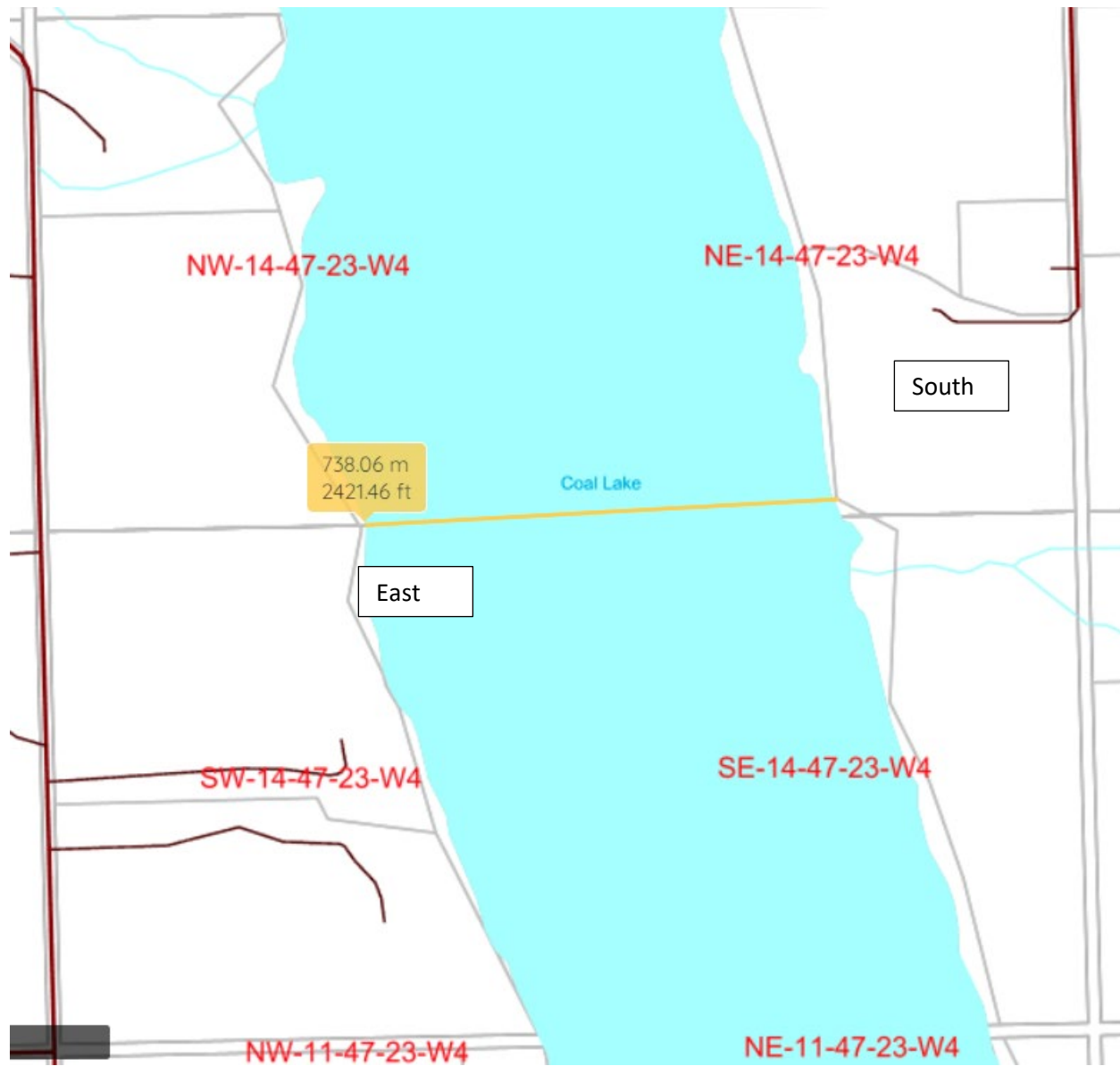


Figure A6. Closest point of NE 14-047-23 W4 (south parcel) to closest point of east parcel of SW 14-047-23 W4.

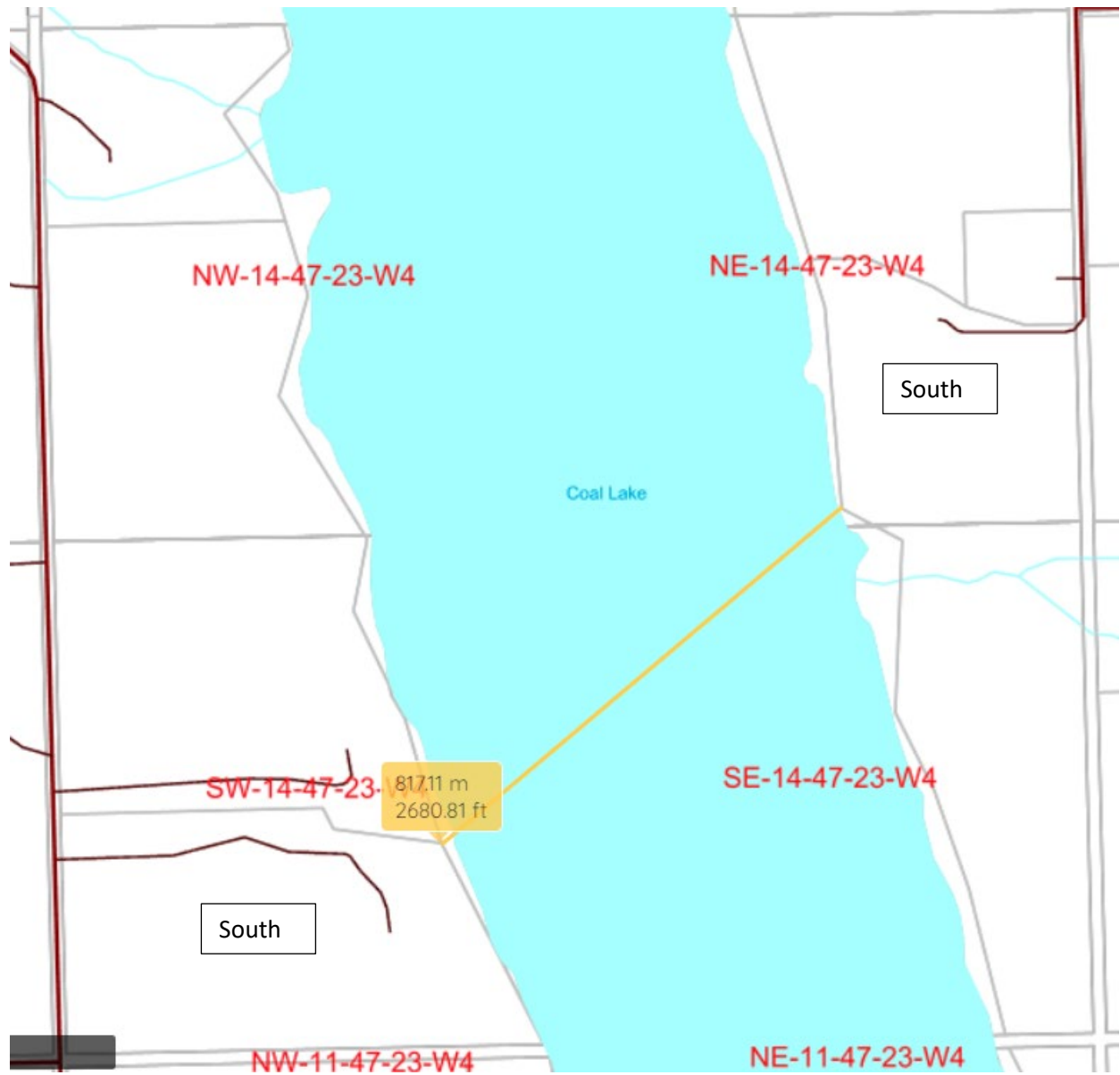


Figure A7. Closest point of NE 14-047-23 W4 (south parcel) to north east point of south parcel of SW 14-047-23 W4.