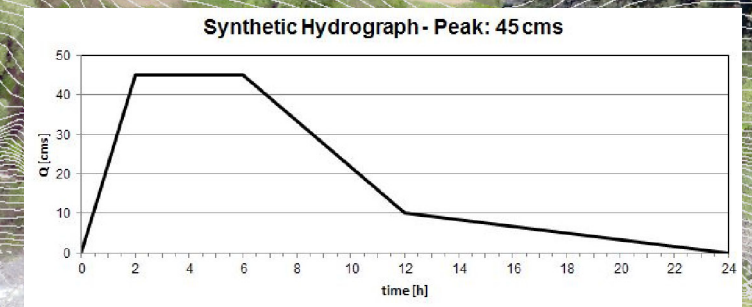
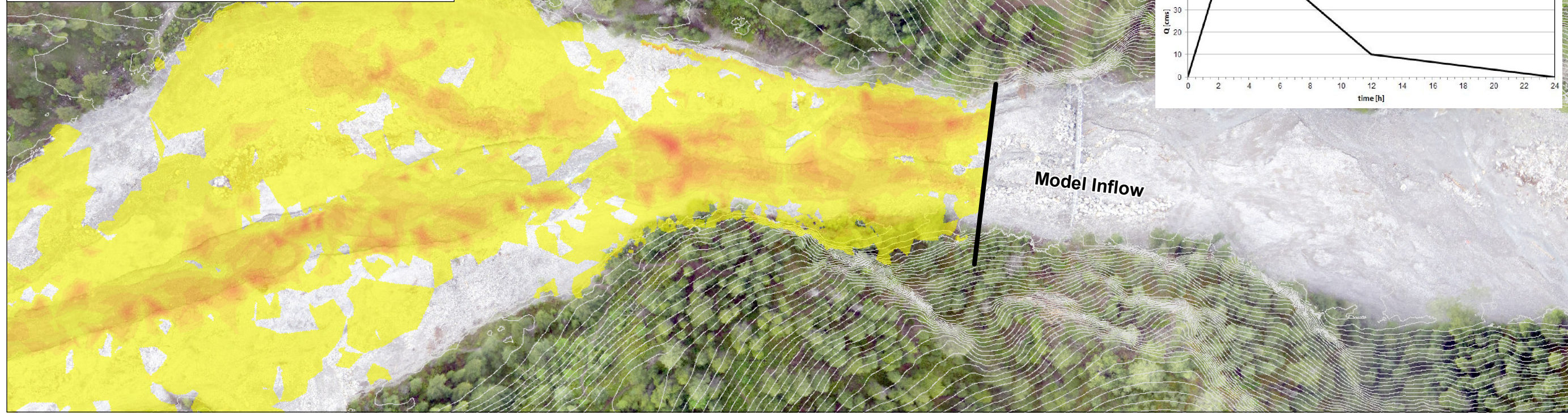
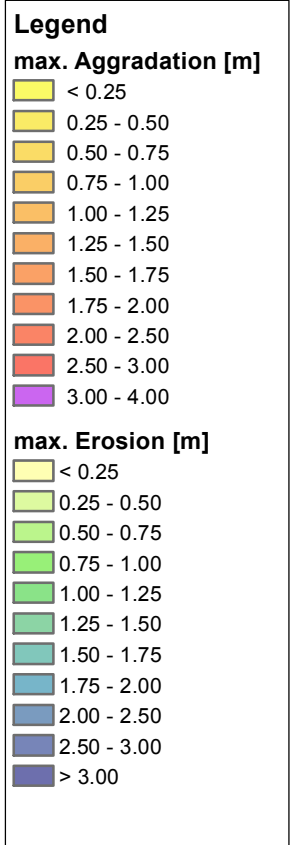
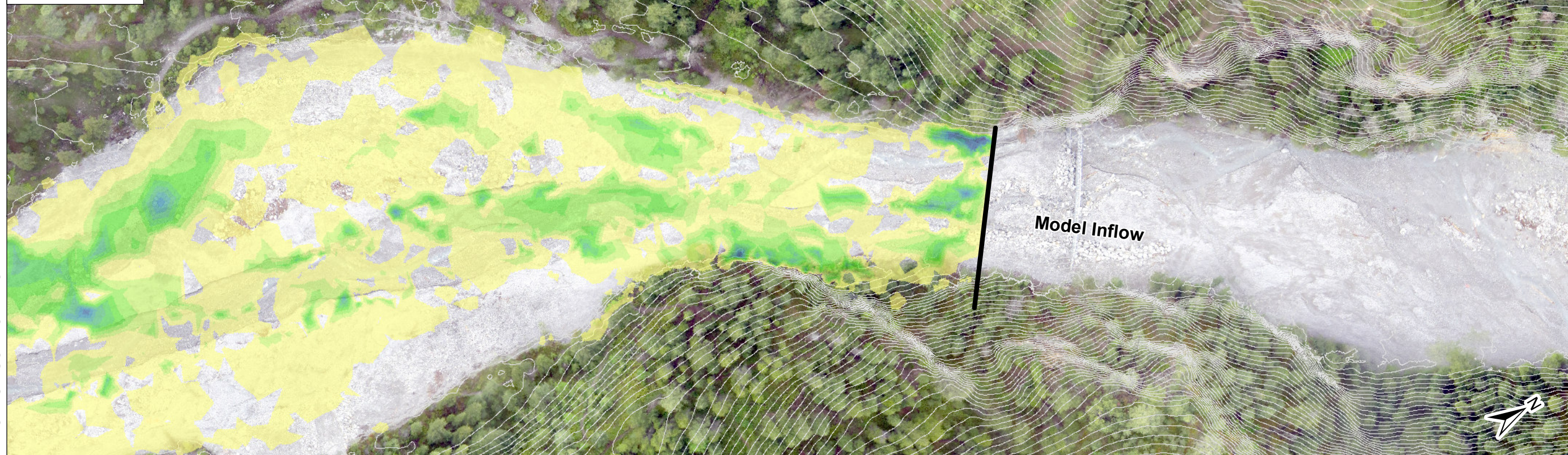


Remaining Peak Discharge 45 cms || Current Situation

MAX AGGRADATION




MAX EROSION



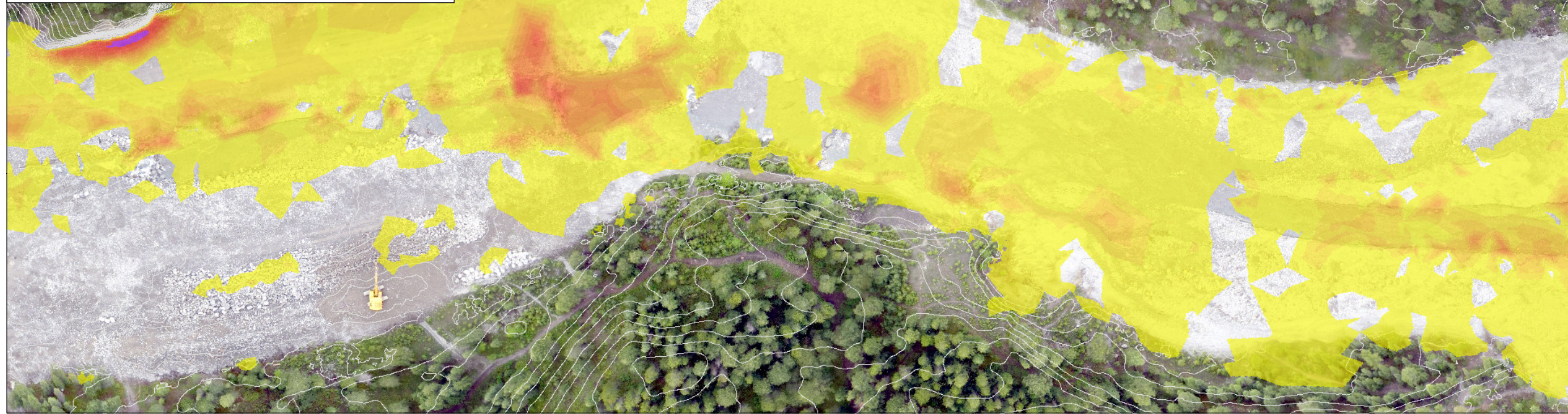
© 2015 - CANADIAN HYDROTECH CORPORATION

U:\6000_CHT\16494\07_DETAIL_ENG\09_HYDROHYDRAULICS\GRADE_CONTROL\CURRENT_SITUATION\MXD\16494-HYD-45cms-001-00.mxd

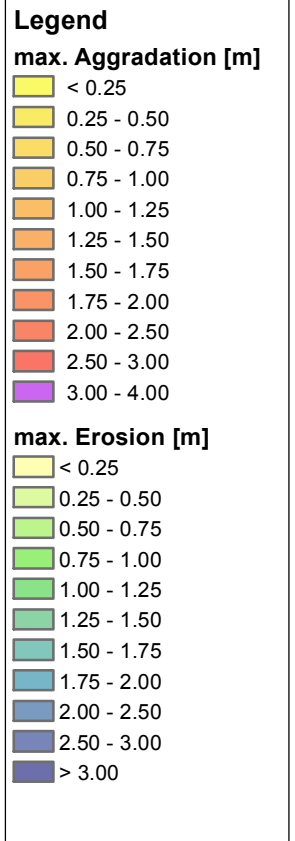
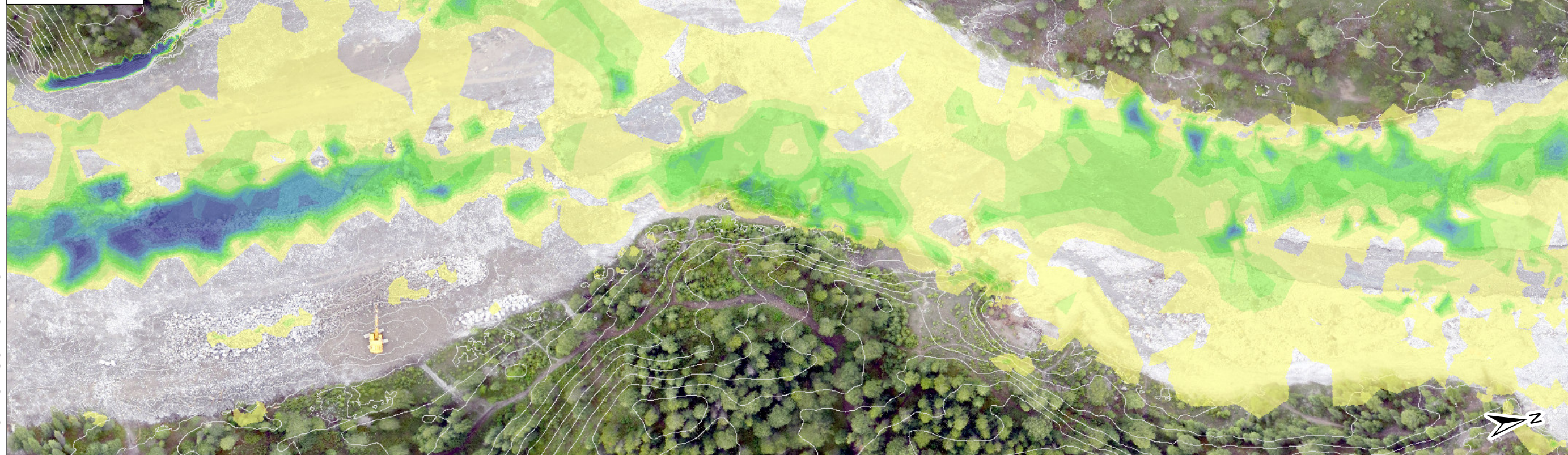
			SCALE:	1:1.000	PROFESSIONAL SEAL:	CLIENT:  Town of CANMORE	PROJECT: LTMM - COUGAR CREEK Permit Design			
			DATE:	2015/07/29			ENGINEERING: CANADIAN HYDROTECH CORPORATION	CONTENT: PLAN TYPE 2D Calculation - current state/preliminary Channel Hydraulics and Bed Load Transport		
			DRAWING:	Powell				PROJECT No.: 16494	DRAWING No.: 16494-HYD-45cms-001-00	REV: 00
			DESIGN:	Powell						
			REVIEW:	Scheickl						
REV.	DATE	REVISION NOTES	DRAWN	REVIEW	APPROVED	APPROVED:				

Remaining Peak Discharge 45 cms || Current Situation

MAX AGGRADATION



MAX EROSION




© 2015 - CANADIAN HYDROTECH CORPORATION

U:\6000_CHT\16494\07_DETAIL_ENG\09_HYDROHYDRAULICS\GRADE_CONTROL\CURRENT_SITUATION\MXD\16494-HYD-45cms-002-00.mxd

SCALE:	1:1.000				
DATE:	2015/07/29				
DRAWING:	Powell				
DESIGN:	Powell				
REVIEW:	Scheickl				
APPROVED:					
REV.	DATE	REVISION NOTES	DRAWN	REVIEW	APPROVED

PROFESSIONAL SEAL:

CLIENT:



ENGINEERING:

CANADIAN HYDROTECH CORPORATION

PROJECT:

LTMM - COUGAR CREEK Permit Design

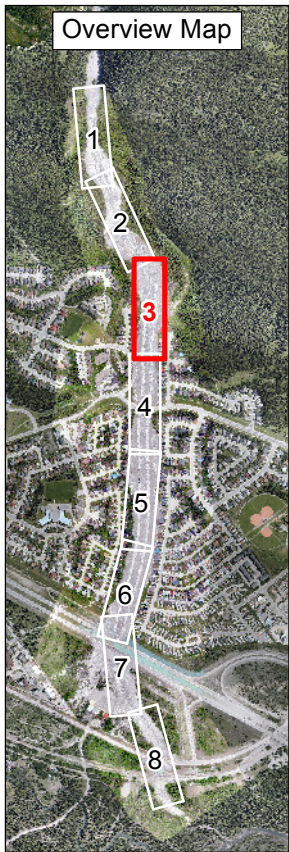
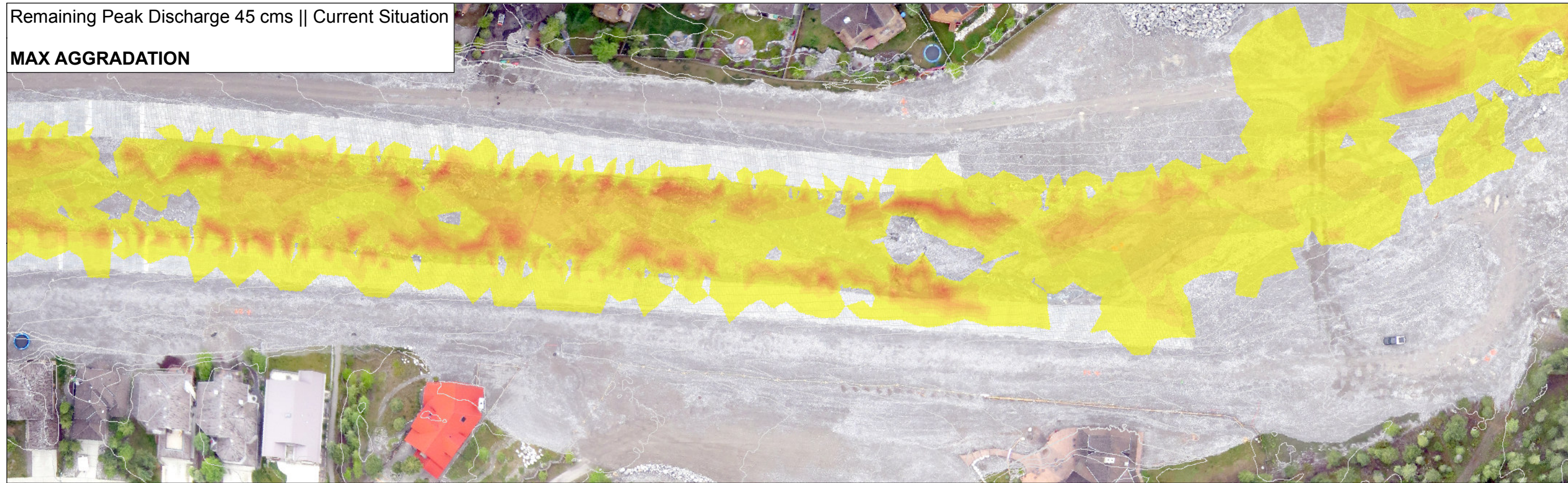
CONTENT: PLAN TYPE

2D Calculation - current state/preliminary Channel Hydraulics and Bed Load Transport

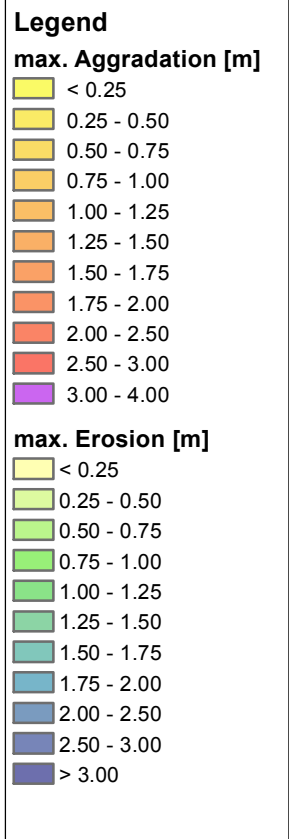
PROJECT No.:	16494	DRAWING No.:	16494-HYD-45cms-002-00	REV:	00
--------------	-------	--------------	------------------------	------	----

Remaining Peak Discharge 45 cms || Current Situation

MAX AGGRADATION



MAX EROSION




© 2015 - CANADIAN HYDROTECH CORPORATION

U:\6000_CHT\16494\07_DETAIL_ENG\09_HYDROHYDRAULICS\GRADE_CONTROL\CURRENT_SITUATION\MXD\16494-HYD-45cms-002-00.mxd

SCALE:	1:1.000				
DATE:	2015/07/29				
DRAWING:	Powell				
DESIGN:	Powell				
REVIEW:	Scheickl				
APPROVED:					
REV.	DATE	REVISION NOTES	DRAWN	REVIEW	APPROVED

PROFESSIONAL SEAL:

CLIENT:



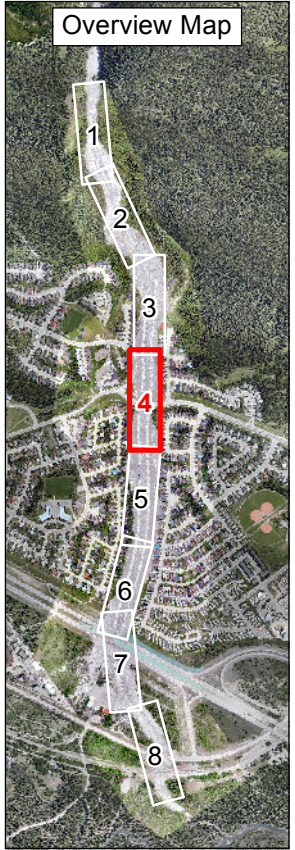
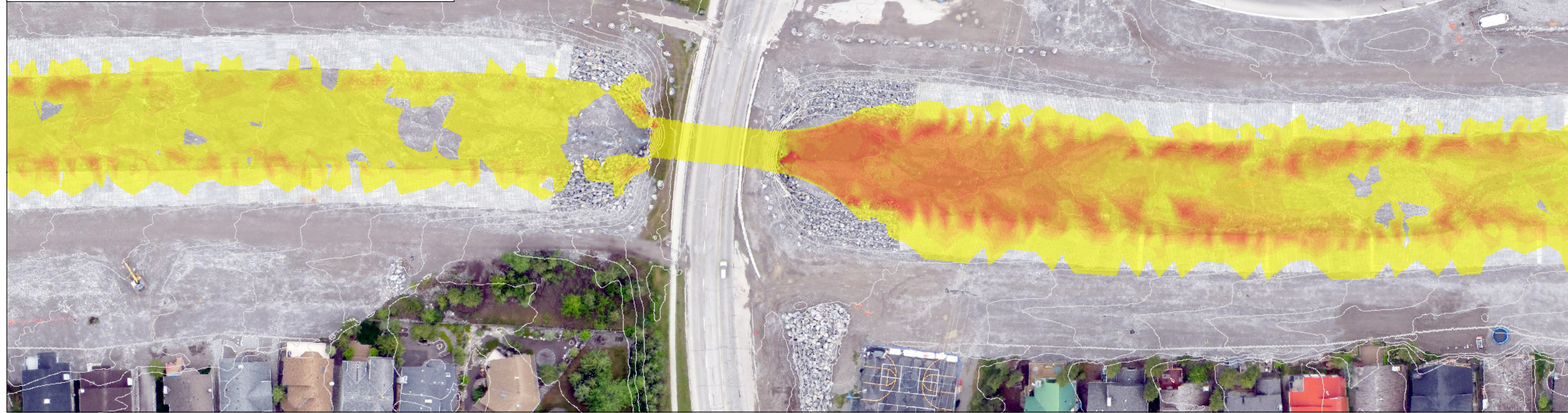
ENGINEERING:

CANADIAN HYDROTECH CORPORATION

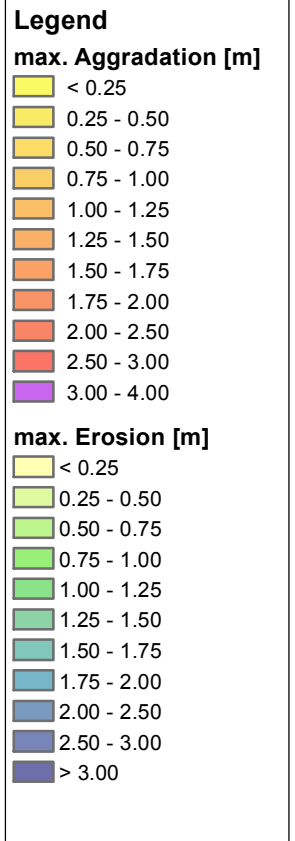
PROJECT:	LTMM - COUGAR CREEK Permit Design		
CONTENT:	PLAN TYPE 2D Calculation - current state/preliminary Channel Hydraulics and Bed Load Transport		
PROJECT No.:	16494	DRAWING No.:	16494-HYD-45cms-003-00
REV:			00

Remaining Peak Discharge 45 cms || Current Situation

MAX AGGRADATION



MAX EROSION




© 2015 - CANADIAN HYDROTECH CORPORATION

U:\16000_CHT\16494\07_DETAIL_ENG\09_HYDROHYDRAULICS\GRADE_CONTROL\CURRENT_SITUATION\MXD\16494-HYD-45cms-002-00.mxd

SCALE:	1:1.000
DATE:	2015/07/29
DRAWING:	Powell
DESIGN:	Powell
REVIEW:	Scheickl

PROFESSIONAL SEAL:

CLIENT:



ENGINEERING:

CANADIAN HYDROTECH CORPORATION

PROJECT:

LTMM - COUGAR CREEK Permit Design

CONTENT: PLAN TYPE

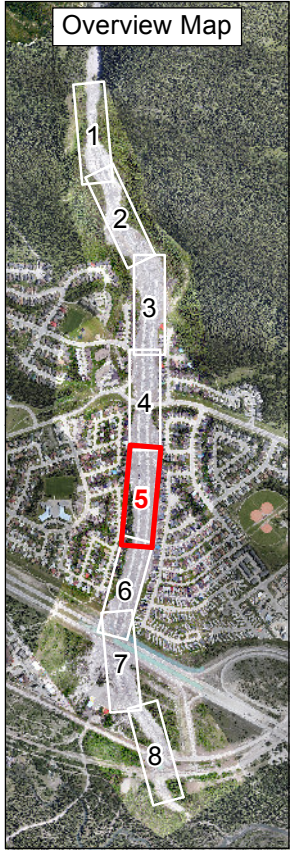
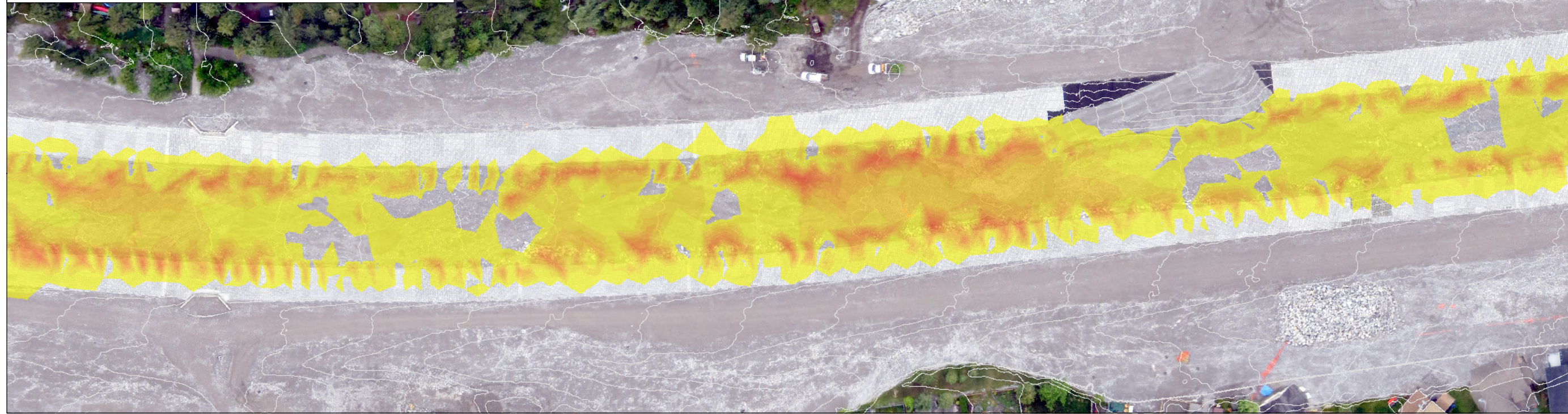
2D Calculation - current state/preliminary Channel Hydraulics and Bed Load Transport

REV.	DATE	REVISION NOTES	DRAWN	REVIEW	APPROVED	APPROVED:

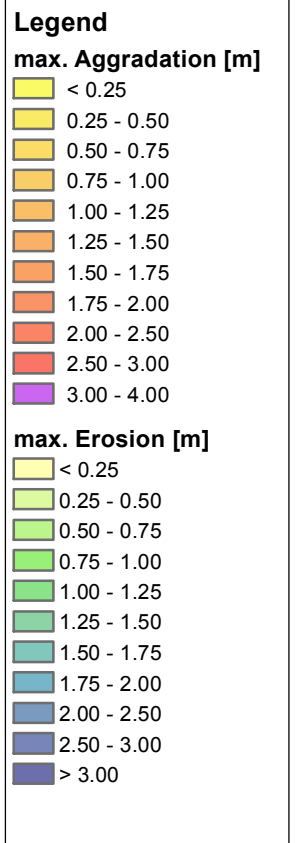
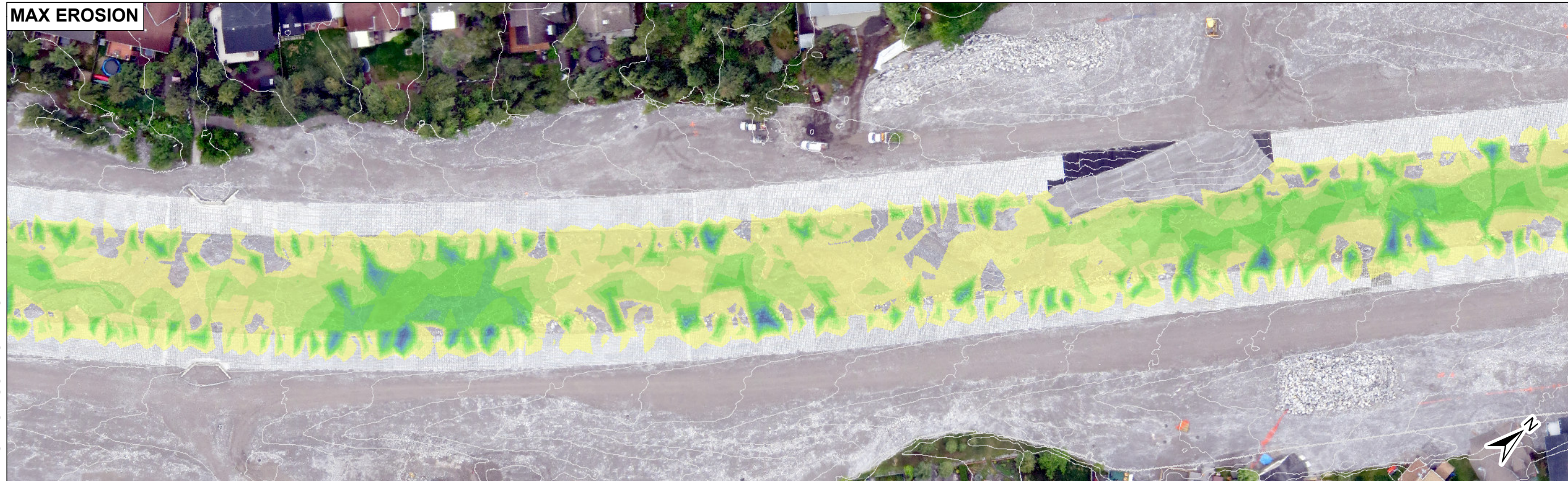
PROJECT No.:	16494	DRAWING No.:	16494-HYD-45cms-004-00	REV:	00
--------------	-------	--------------	------------------------	------	----

Remaining Peak Discharge 45 cms || Current Situation

MAX AGGRADATION



MAX EROSION



© 2015 - CANADIAN HYDROTECH CORPORATION

U:\6000_CHT\16494\07_DETAIL_ENG\09_HYDRO\HYDRAULICS\GRADE_CONTROL\CURRENT_SITUATION\MXD\16494-HYD-45cms-002-00.mxd

SCALE:	1:1.000				
DATE:	2015/07/29				
DRAWING:	Powell				
DESIGN:	Powell				
REVIEW:	Scheickl				
APPROVED:					
REV.	DATE	REVISION NOTES	DRAWN	REVIEW	APPROVED

PROFESSIONAL SEAL:

CLIENT:



ENGINEERING:

CANADIAN HYDROTECH CORPORATION

PROJECT:

LTMM - COUGAR CREEK Permit Design

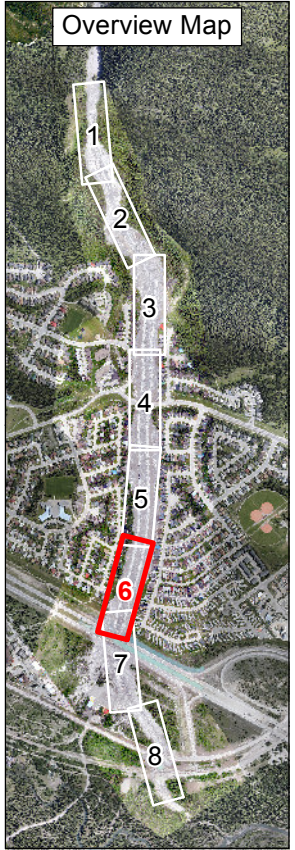
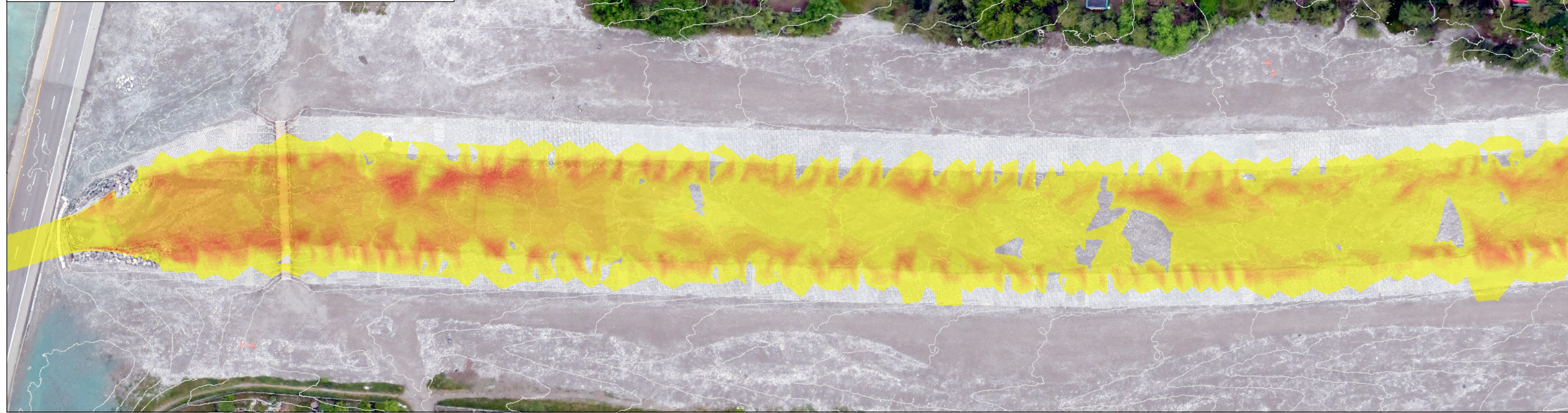
CONTENT: PLAN TYPE

2D Calculation - current state/preliminary Channel Hydraulics and Bed Load Transport

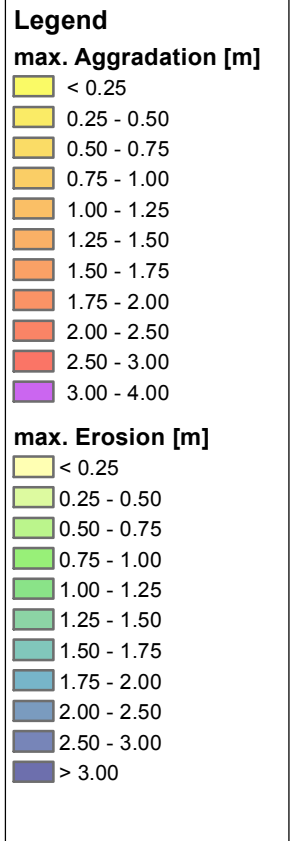
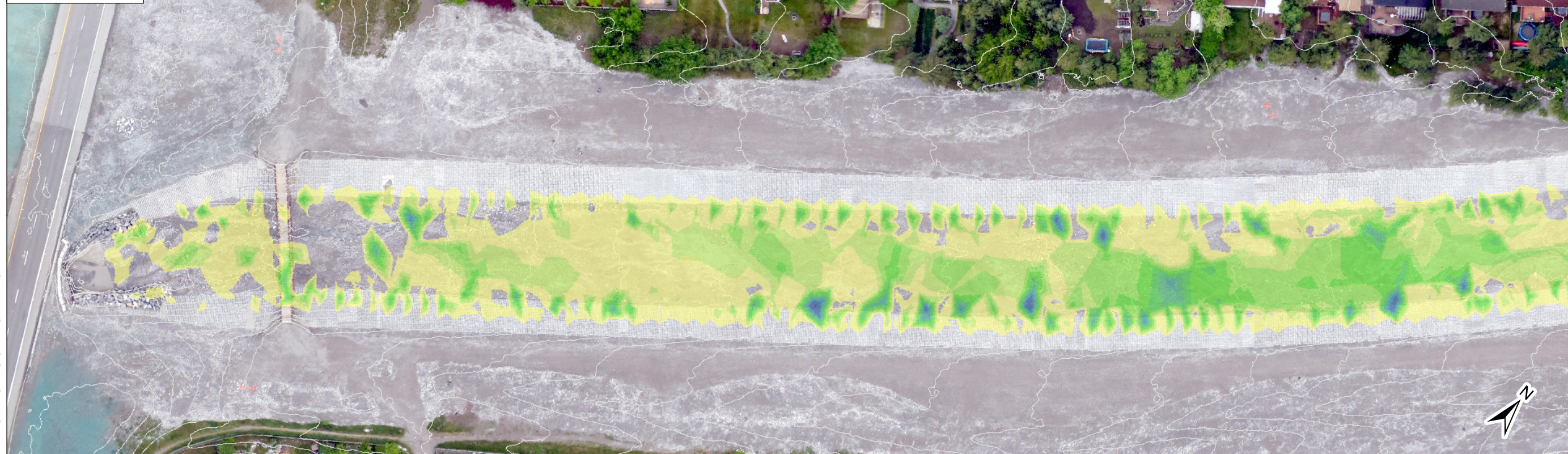
PROJECT No.:	16494	DRAWING No.:	16494-HYD-45cms-005-00	REV:	00
--------------	-------	--------------	------------------------	------	----

Remaining Peak Discharge 45 cms || Current Situation

MAX AGGRADATION



MAX EROSION



© 2015 - CANADIAN HYDROTECH CORPORATION

U:\6000_CHT\16494\07_DETAIL_ENG\09_HYDROHYDRAULICS\GRADE_CONTROL\CURRENT_SITUATION\MXD\16494-HYD-45cms-002-00.mxd

SCALE:	1:1.000				
DATE:	2015/07/29				
DRAWING:	Powell				
DESIGN:	Powell				
REVIEW:	Scheickl				
APPROVED:					
REV.	DATE	REVISION NOTES	DRAWN	REVIEW	APPROVED

PROFESSIONAL SEAL:

CLIENT:



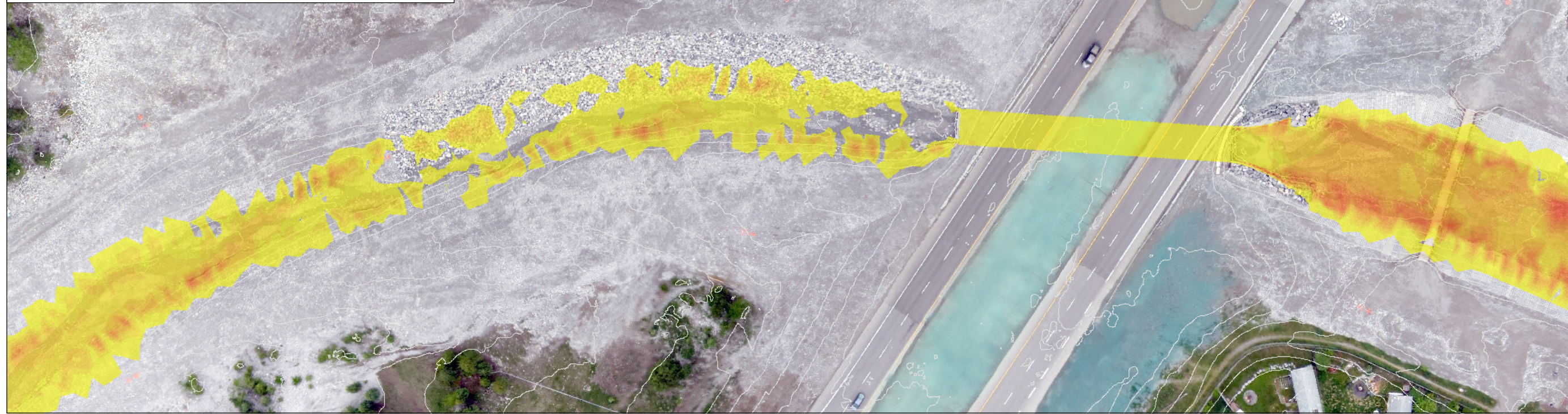
ENGINEERING:

CANADIAN HYDROTECH CORPORATION

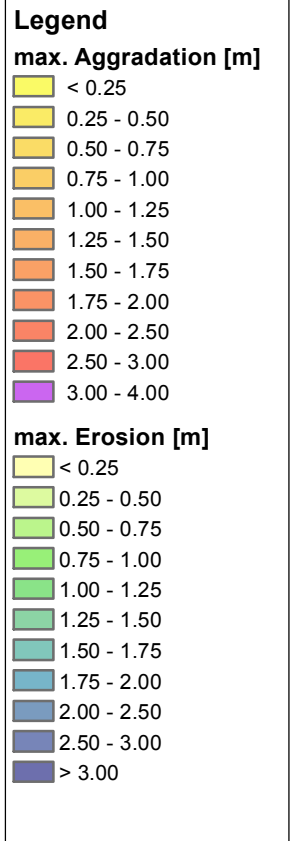
PROJECT:	LTMM - COUGAR CREEK Permit Design		
CONTENT:	PLAN TYPE 2D Calculation - current state/preliminary Channel Hydraulics and Bed Load Transport		
PROJECT No.:	16494	DRAWING No.:	16494-HYD-45cms-006-00
REV:			00

Remaining Peak Discharge 45 cms || Current Situation

MAX AGGRADATION



MAX EROSION




© 2015 - CANADIAN HYDROTECH CORPORATION

U:\6000_CHT\16494\07_DETAIL_ENG\09_HYDRO\HYDRAULICS\GRADE_CONTROL\CURRENT_SITUATION\MXD\16494-HYD-45cms-002-00.mxd

SCALE:	1:1.000				
DATE:	2015/07/29				
DRAWING:	Powell				
DESIGN:	Powell				
REVIEW:	Scheickl				
APPROVED:					
REV.	DATE	REVISION NOTES	DRAWN	REVIEW	APPROVED

PROFESSIONAL SEAL:

CLIENT:



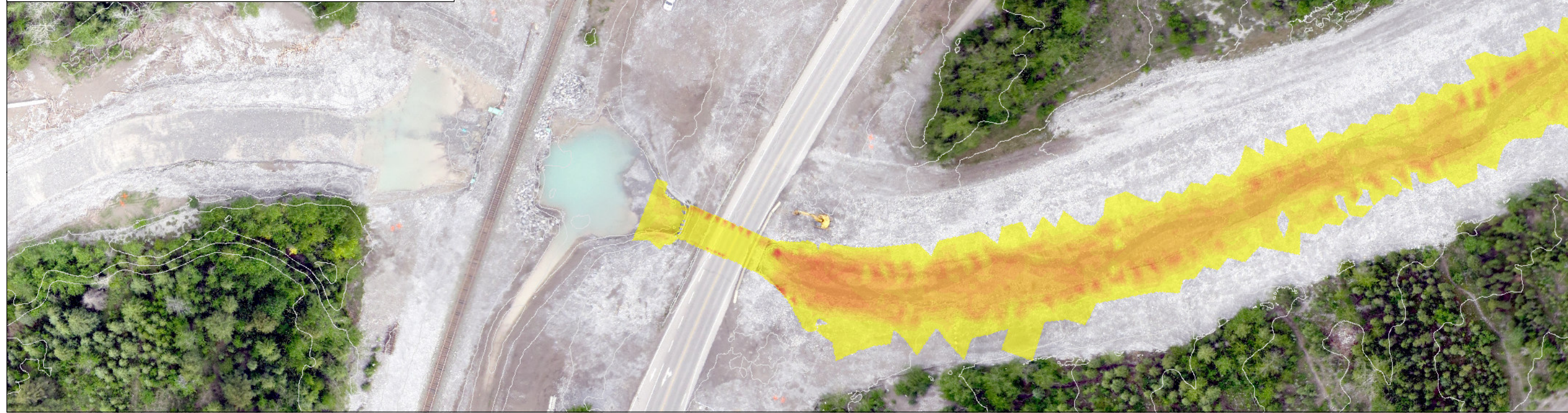
ENGINEERING:

CANADIAN HYDROTECH CORPORATION

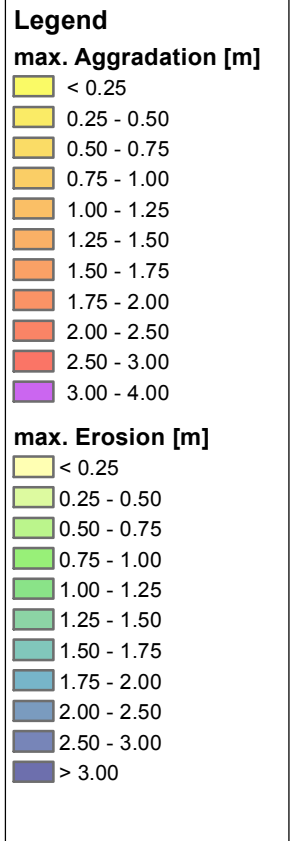
PROJECT:	LTMM - COUGAR CREEK Permit Design		
CONTENT:	PLAN TYPE 2D Calculation - current state/preliminary Channel Hydraulics and Bed Load Transport		
PROJECT No.:	16494	DRAWING No.:	16494-HYD-45cms-007-00
REV:			00

Remaining Peak Discharge 45 cms || Current Situation

MAX AGGRADATION



MAX EROSION




© 2015 - CANADIAN HYDROTECH CORPORATION

U:\6000_CHT\16494\07_DETAIL_ENG\09_HYDRO\HYDRAULICS\GRADE_CONTROL\CURRENT_SITUATION\MXD\16494-HYD-45cms-002-00.mxd

SCALE:	1:1.000				
DATE:	2015/07/29				
DRAWING:	Powell				
DESIGN:	Powell				
REVIEW:	Scheickl				
APPROVED:					
REV.	DATE	REVISION NOTES	DRAWN	REVIEW	APPROVED

PROFESSIONAL SEAL:

CLIENT:



ENGINEERING:

CANADIAN HYDROTECH CORPORATION

PROJECT:

LTMM - COUGAR CREEK Permit Design

CONTENT: PLAN TYPE

2D Calculation - current state/preliminary Channel Hydraulics and Bed Load Transport

PROJECT No.:	16494	DRAWING No.:	16494-HYD-45cms-008-00	REV:	00
--------------	-------	--------------	------------------------	------	----