

SR1 Board Tour – 28 October 2020

- 1.** Started at the Petro-Canada on Highway 1 and Highway 22 (10:00 am).
 - a. Went north on Township Road 245A to Highway 22.
 - b. Travelled South on Highway 22 to Springbank Road.
 - c. Went East on Springbank Road to Range Road 41.

- 2.** Drove South on Range Road 41 approximately 1.6 km.
 - a. Went back to Springbank Road, and drove east along Springbank Road to Range Road 35 (also noticing Range Road 40 to the north).

- 3.** Went south on Range Road 35 approximately 1.8 km.
 - a. Went back to Highway 22 along Springbank Road.
 - b. Travelled South on Highway 22 to the Elbow River.

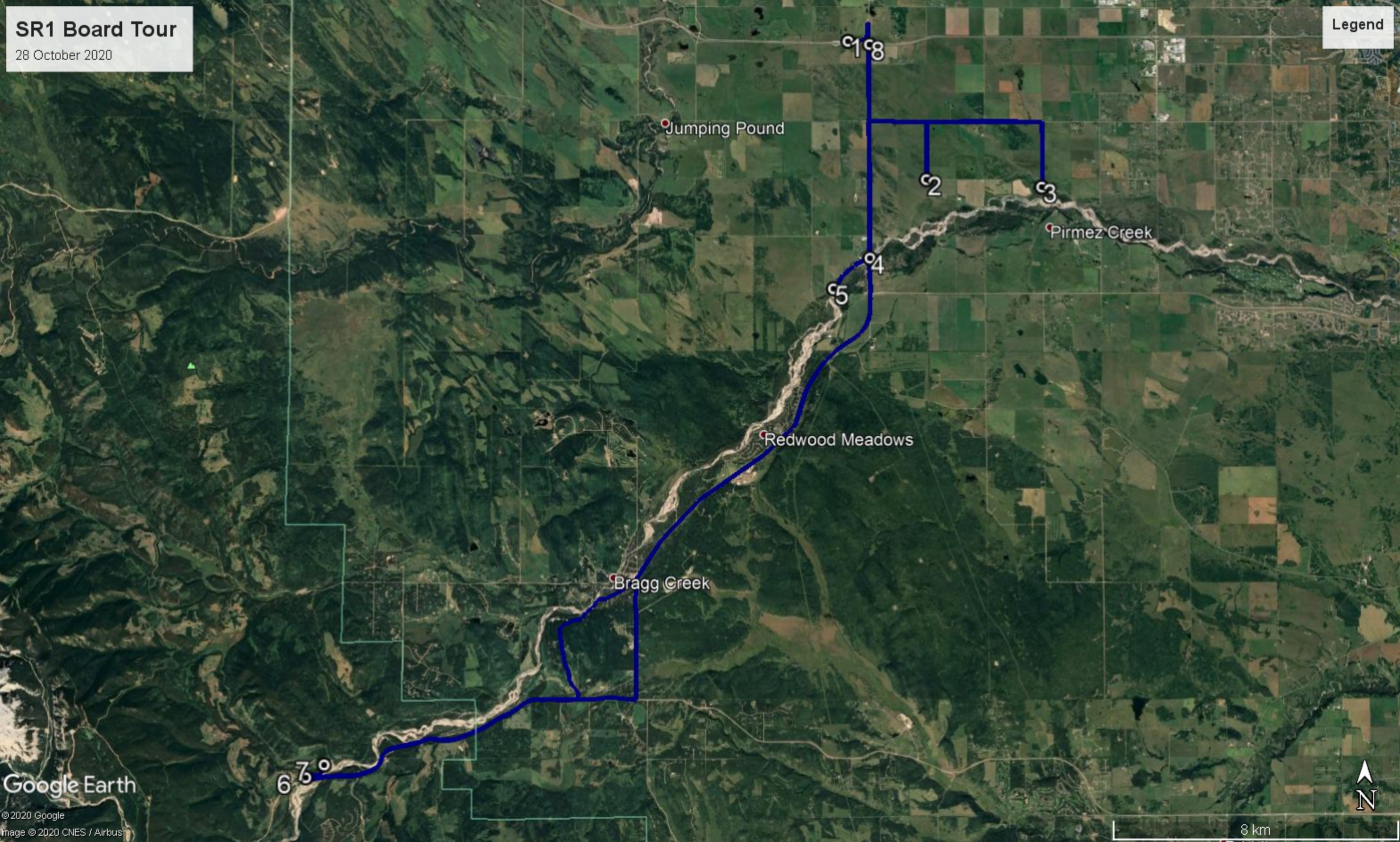
- 4.** Parked on the south side of the Elbow River along Highway 22

- 5.** Walked approximately 1.5 km upstream (west).
 - a. Continued South along Highway 22, past Redwood Meadows and to Bragg Creek.
 - b. Went west and the south through Bragg Creek on Highway 758 (White Ave).
 - c. Continued on Highway 758 to Highway 66.

- 6.** Went west on Highway 66 to Fullerton Day Use Area.

- 7.** Walked east on Elbow Trail approximately 1-1.5 km.

- 8.** Went back along same route, except took Highway 66 to Highway 22 to returned to starting point.



6 7 8

Jumping Pound

Pirmez Creek

Redwood Meadows

Bragg Creek

8 km

