

STONEY TRIBAL ADMINISTRATION

L. George

Secretary of the Commission
Canadian Energy Regulator
Suite 210, 517 10th Avenue SW
Calgary, AB T2R 0A8

January 13, 2020

Dear Ms. George,

Re: Chiniki First Nation Amendment to Submitted Written Evidence for Edson Mainline System Expansion Project Hearing

- (1) This letter is submitted on behalf of the Chiniki First Nation, one of the three distinct nations of Stoney Nakoda Nations.
- (2) SNN holds Aboriginal rights and title recognized by Treaty No.7 and the *Natural Resources Transfer Act, 1930* and affirmed under Section 35 of the *Constitution Act, 1982*.
- (3) Chiniki First Nation is registered as an Intervenor for the Canadian Energy Regulator hearing process on the NOVA Gas Transmission Ltd Edson Mainline Expansion Project.
- (4) Chiniki First Nation filed the *Chiniki First Nation Section 35 Rights Impact Assessment Report* (Filing C04029-2) on January 9, 2020 as per directives in CER's Ruling No. 2 - Amended Timetable of Events and List of Issues (Filing C02269-1).
- (5) Chiniki First Nation submits two attached map figures as amendments to Figure 4-2.1 and Figure 5-1.1 respectively in the *Chiniki First Nation Section 35 Rights Impact Assessment Report*.
- (6) The amended map figures contain the same information as the current Figure 4-2.1 and Figure 5-1.1 of the *Chiniki First Nation Section 35 Rights Impact Assessment Report* but includes further details that support Chiniki First Nations filed written evidence.

- (7) Given that the amended map figures do not introduce new information but rather add to existing filed evidence, Chiniki First Nation requests that the attached map figures replace the current Figure 4-2.1 and Figure 5-1.1 in the *Chiniki First Nation Section 35 Rights Impact Assessment Report*.

Sincerely,



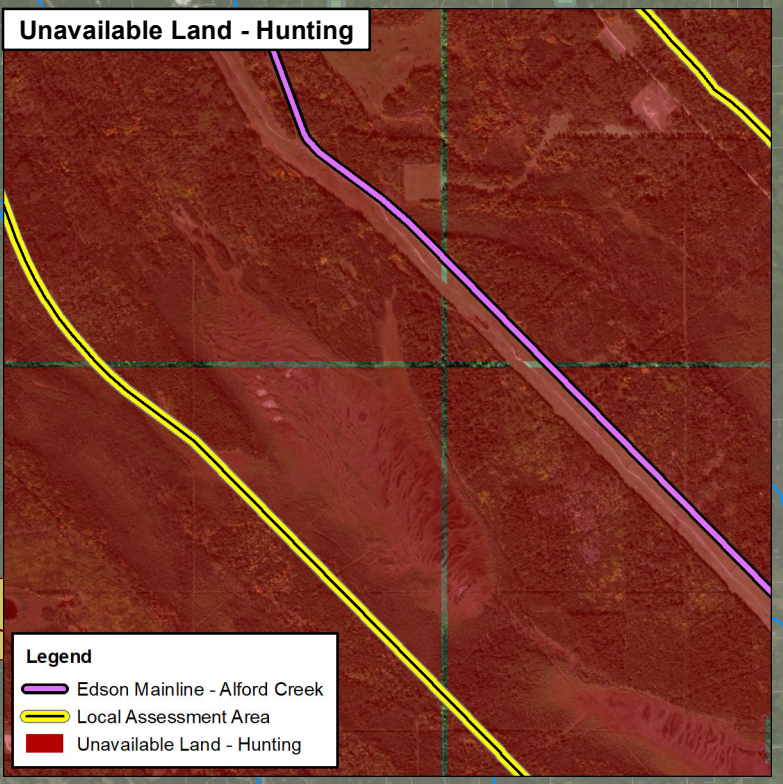
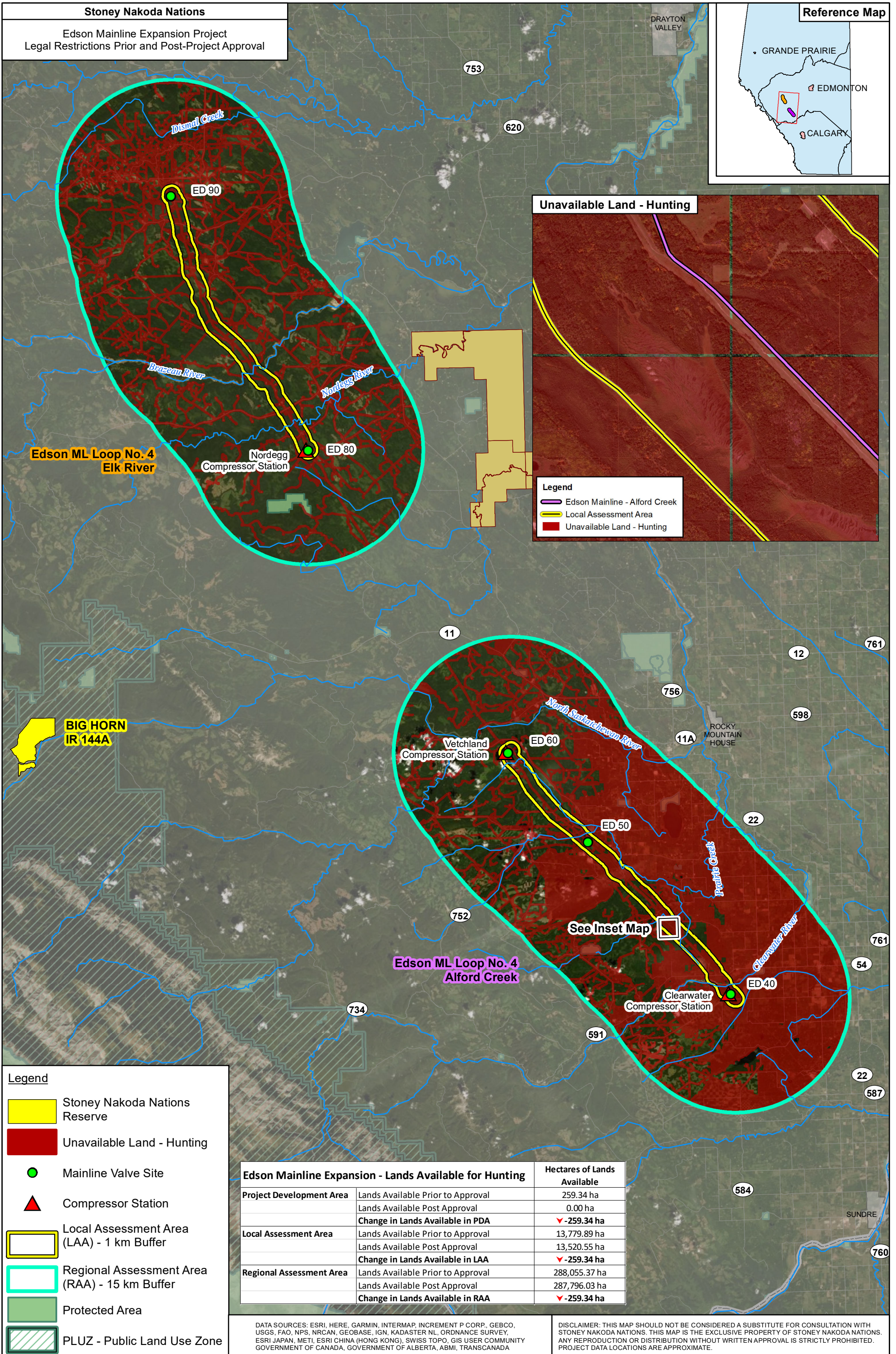
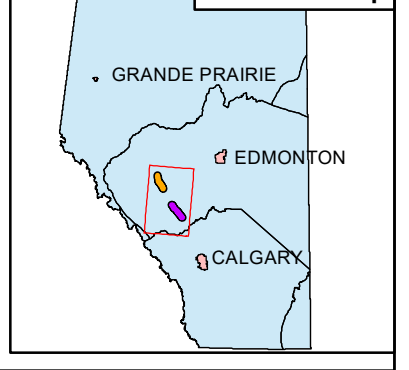
Dean Cherkas
Director, Consultation
Stoney Tribal Administration

Cc: Malcolm Macpherson - Clark Wilson LLP

Stoney Nakoda Nations

Edson Mainline Expansion Project
Legal Restrictions Prior and Post-Project Approval

Reference Map



Legend
 - Edson Mainline - Alford Creek
 - Local Assessment Area
 - Unavailable Land - Hunting

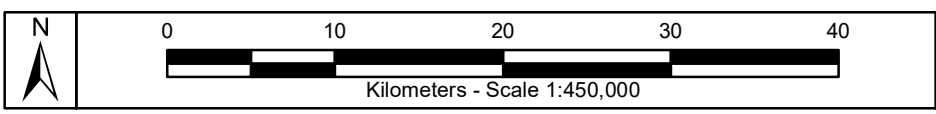
Legend

- Stoney Nakoda Nations Reserve
- Unavailable Land - Hunting
- Mainline Valve Site
- Compressor Station
- Local Assessment Area (LAA) - 1 km Buffer
- Regional Assessment Area (RAA) - 15 km Buffer
- Protected Area
- PLUZ - Public Land Use Zone

Edson Mainline Expansion - Lands Available for Hunting		Hectares of Lands Available
Project Development Area	Lands Available Prior to Approval	259.34 ha
	Lands Available Post Approval	0.00 ha
	Change in Lands Available in PDA	▼ -259.34 ha
Local Assessment Area	Lands Available Prior to Approval	13,779.89 ha
	Lands Available Post Approval	13,520.55 ha
	Change in Lands Available in LAA	▼ -259.34 ha
Regional Assessment Area	Lands Available Prior to Approval	288,055.37 ha
	Lands Available Post Approval	287,796.03 ha
	Change in Lands Available in RAA	▼ -259.34 ha

DATA SOURCES: ESRI, HERE, GARMIN, INTERMAP, INCREMENT P CORP., GEBCO, USGS, FAO, NPS, NRCAN, GEOBASE, IGN, KADASTER NL, ORDANCE SURVEY, ESRI JAPAN, METI, ESRI CHINA (HONG KONG), SWISS TOPO, GIS USER COMMUNITY, GOVERNMENT OF CANADA, GOVERNMENT OF ALBERTA, ABMI, TRANSCANADA

DISCLAIMER: THIS MAP SHOULD NOT BE CONSIDERED A SUBSTITUTE FOR CONSULTATION WITH STONEY NAKODA NATIONS. THIS MAP IS THE EXCLUSIVE PROPERTY OF STONEY NAKODA NATIONS. ANY REPRODUCTION OR DISTRIBUTION WITHOUT WRITTEN APPROVAL IS STRICTLY PROHIBITED. PROJECT DATA LOCATIONS ARE APPROXIMATE.



Date: Dec 12, 2019
Coordinate System: NAD83 11N

Prepared For: Stoney Nakoda Nations

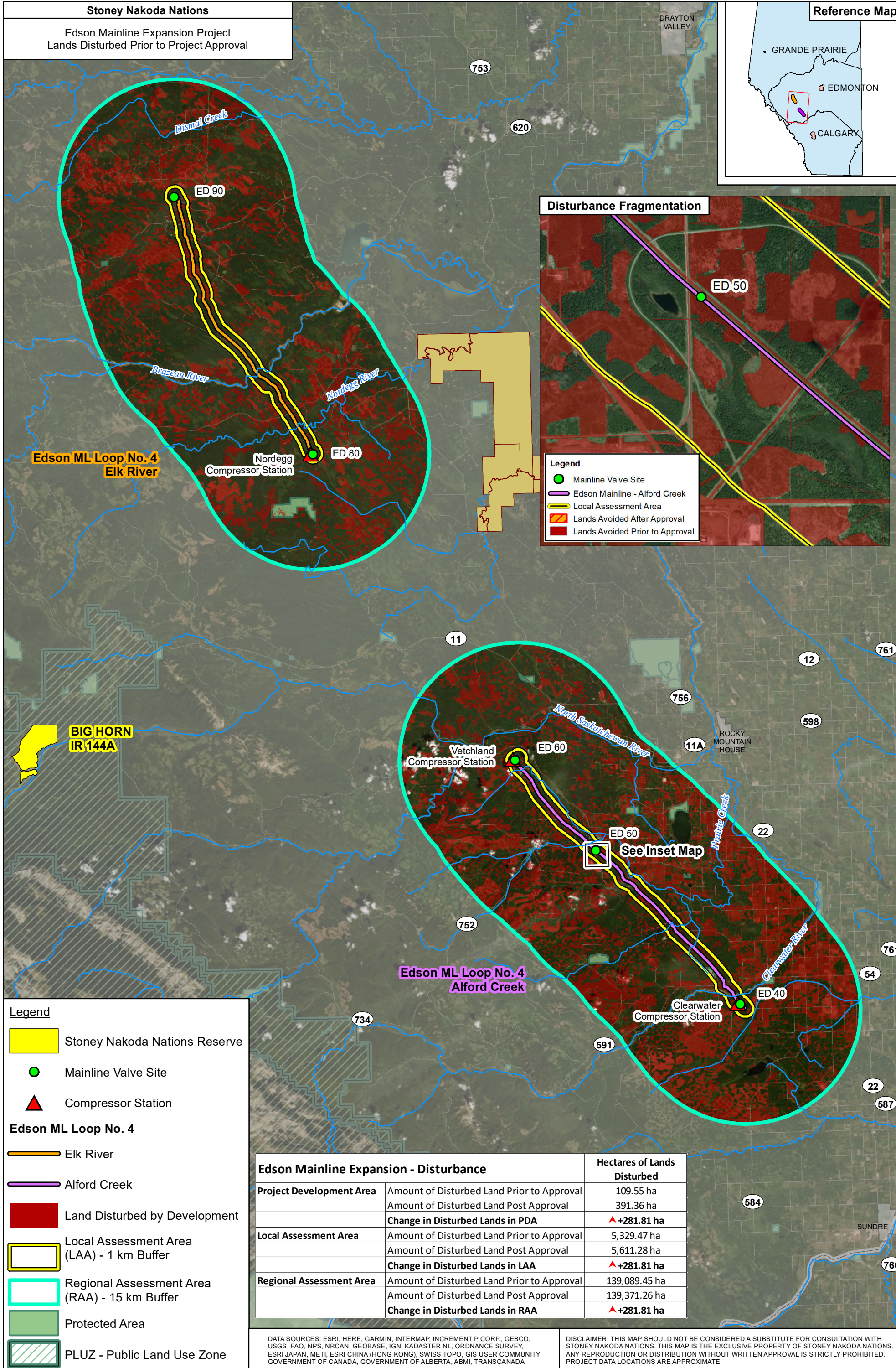
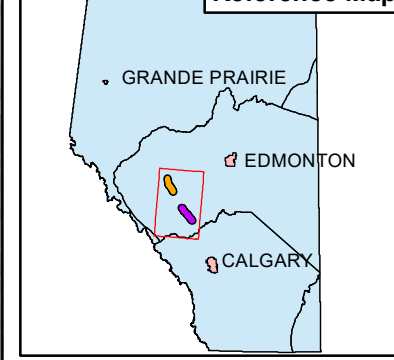
Prepared By: MNP LLP **MNP**

Figure: 4.2-1

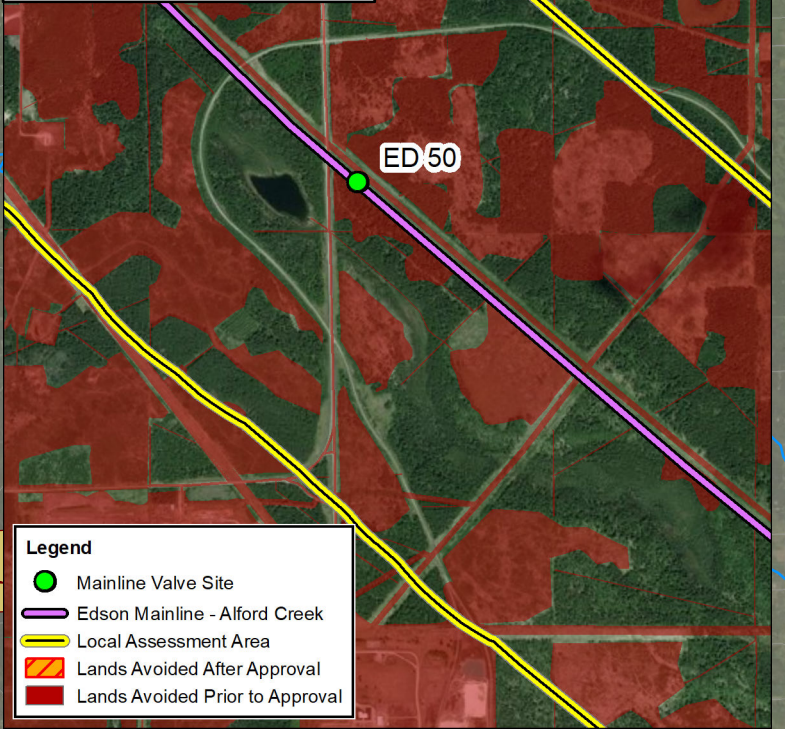
Stoney Nakoda Nations

Edson Mainline Expansion Project
Lands Disturbed Prior to Project Approval

Reference Map



Disturbance Fragmentation



Legend

- Mainline Valve Site
- Edson Mainline - Alford Creek
- Local Assessment Area
- Lands Avoided After Approval
- Lands Avoided Prior to Approval

Legend

- Stoney Nakoda Nations Reserve
- Mainline Valve Site
- ▲ Compressor Station

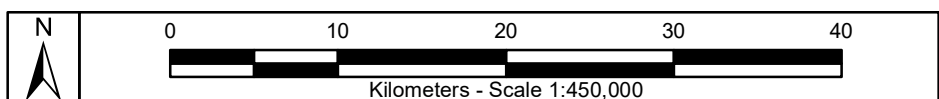
Edson ML Loop No. 4

- Elk River
- Alford Creek
- Land Disturbed by Development
- Local Assessment Area (LAA) - 1 km Buffer
- Regional Assessment Area (RAA) - 15 km Buffer
- Protected Area
- PLUZ - Public Land Use Zone

Edson Mainline Expansion - Disturbance		Hectares of Lands Disturbed
Project Development Area	Amount of Disturbed Land Prior to Approval	109.55 ha
	Amount of Disturbed Land Post Approval	391.36 ha
	Change in Disturbed Lands in PDA	▲ +281.81 ha
Local Assessment Area	Amount of Disturbed Land Prior to Approval	5,329.47 ha
	Amount of Disturbed Land Post Approval	5,611.28 ha
	Change in Disturbed Lands in LAA	▲ +281.81 ha
Regional Assessment Area	Amount of Disturbed Land Prior to Approval	139,089.45 ha
	Amount of Disturbed Land Post Approval	139,371.26 ha
	Change in Disturbed Lands in RAA	▲ +281.81 ha

DATA SOURCES: ESRI, HERE, GARMIN, INTERMAP, INCREMENT P CORP., GEBCO, USGS, FAO, NPS, NRCAN, GEOBASE, IGN, KADASTER NL, ORDINANCE SURVEY, ESRI JAPAN, METI, ESRI CHINA (HONG KONG), SWISS TOPO, GIS USER COMMUNITY, GOVERNMENT OF CANADA, GOVERNMENT OF ALBERTA, ABMI, TRANSCANADA

DISCLAIMER: THIS MAP SHOULD NOT BE CONSIDERED A SUBSTITUTE FOR CONSULTATION WITH STONEY NAKODA NATIONS. THIS MAP IS THE EXCLUSIVE PROPERTY OF STONEY NAKODA NATIONS. ANY REPRODUCTION OR DISTRIBUTION WITHOUT WRITTEN APPROVAL IS STRICTLY PROHIBITED. PROJECT DATA LOCATIONS ARE APPROXIMATE.



Date: Dec 12, 2019
Coordinate System: NAD83 11N

Prepared For: Stoney Nakoda Nations

Prepared By: MNP LLP **MNP**

Figure: 5.1-1