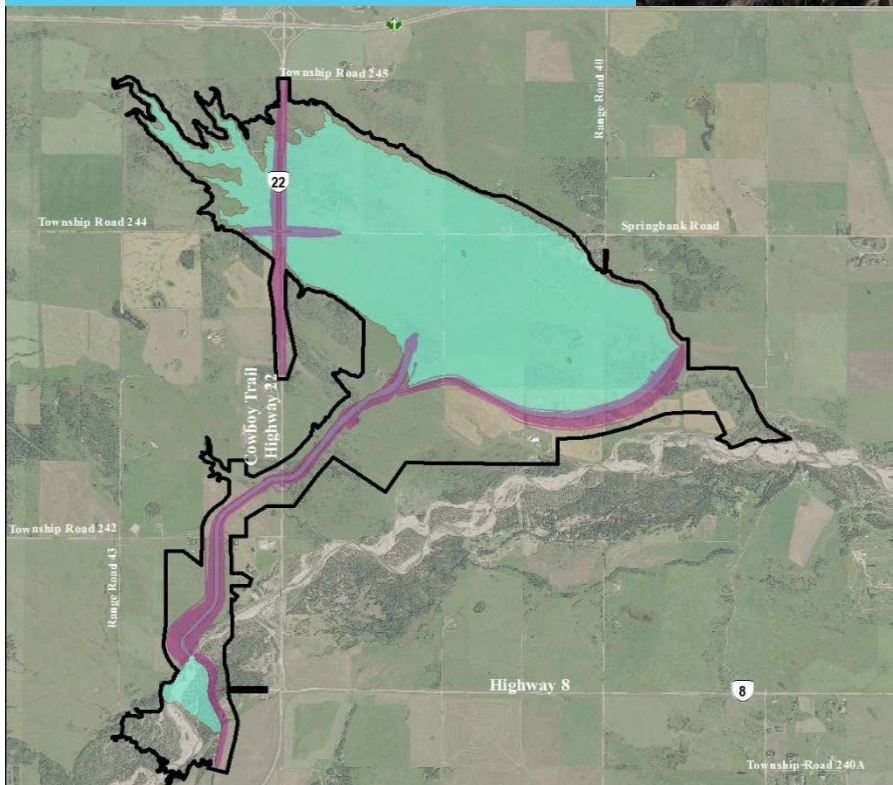


Springbank Off-stream Reservoir Project

Environmental Impact Assessment



Volume 3A Effects Assessment (Construction and Dry Operations)

March 2018

**SPRINGBANK OFF-STREAM RESERVOIR PROJECT
ENVIRONMENTAL IMPACT ASSESSMENT
VOLUME 3A: EFFECTS ASSESSMENT (CONSTRUCTION AND DRY OPERATIONS)**

Introduction
March 2018

Table of Contents

ABBREVIATIONS	1.ii
1.0 INTRODUCTION	1.1

**SPRINGBANK OFF-STREAM RESERVOIR PROJECT
ENVIRONMENTAL IMPACT ASSESSMENT
VOLUME 3A: EFFECTS ASSESSMENT (CONSTRUCTION AND DRY OPERATIONS)**

Introduction
March 2018

Abbreviations

EIA	environmental impact assessment
the Project	Springbank Off-stream Reservoir Project
VC	valued component

**SPRINGBANK OFF-STREAM RESERVOIR PROJECT
ENVIRONMENTAL IMPACT ASSESSMENT
VOLUME 3A: EFFECTS ASSESSMENT (CONSTRUCTION AND DRY OPERATIONS)**

Introduction
March 2018

1.0 INTRODUCTION

This volume of the Springbank Off-stream Reservoir Project EIA addresses the environmental effects of the construction and dry operations phases of the Project. Each of the 15 valued components (VCs) is assessed under the following sections:

The scope of the assessment is described in terms of:

- the regulations and policies that pertain to the VC
- concerns about the Project's effects on the VC that have been raised by the public and Indigenous groups
- information from Indigenous groups on traditional land and resource use that is incorporated into the assessment
- potential effects of the Project on the VC, including what may cause these effects and how the effects will be measured
- the spatial and temporal boundaries within which the effects will be assessed
- how residual effects on the VC will be characterized
- what defines a significant effect on the VC

The existing conditions of the VC are described. This section presents the base case, that is the result of projects and activities that have occurred to the present, prior to the development of the Project.

The Project interactions with the VC are described. This section identifies what Project components and activities are expected to interact with the VC. The components and activities that may interact during the construction and operation phases are:

- Construction
 - clearing
 - channel excavation
 - water diversion construction
 - dam and berm construction
 - low-level outlet works construction
 - road construction
 - bridge construction
 - lay down areas
 - borrow extraction
 - reclamation

**SPRINGBANK OFF-STREAM RESERVOIR PROJECT
ENVIRONMENTAL IMPACT ASSESSMENT
VOLUME 3A: EFFECTS ASSESSMENT (CONSTRUCTION AND DRY OPERATIONS)**

Introduction
March 2018

- Dry Operations
 - maintenance

The residual effects on the VC are addressed. This is the application case. This is accomplished through the description of how the Project interactions may affect the VC, applying mitigation measures to address the effects, and describing the residual or left-over effects that follow application of the mitigation measures.

The residual effects are compared to defined standards to determine the significance of the effects on the VC.

The confidence in the conclusion of the effect on the VC is stated. Factors affecting the confidence in the conclusions are the quality or quantity of the data used in the assessment, expected effectiveness of mitigation and enhancement measures and the assumptions made in assessing the effects.

A summary or conclusions based on the assessment is presented.