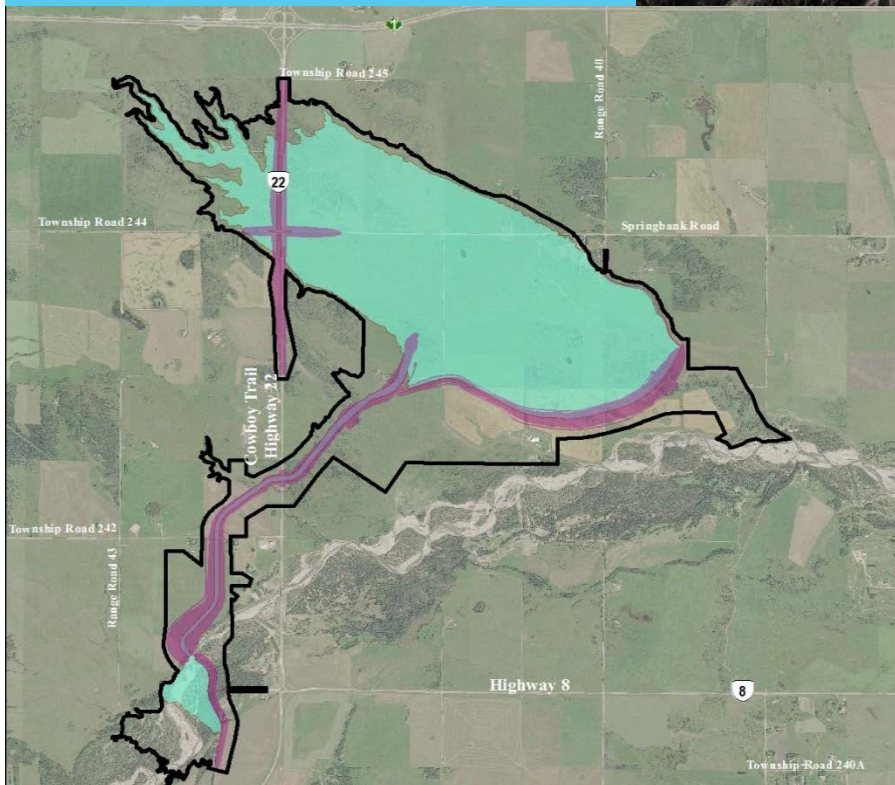


Springbank Off-stream Reservoir Project

Environmental Impact Assessment



Preface to
March 2018 EIS

March 2018

SPRINGBANK OFF-STREAM RESERVOIR PROJECT ENVIRONMENTAL IMPACT ASSESSMENT

Preface to March 2018 EIS
March 2018

PREFACE TO MARCH 2018 EIS

On October 17, 2017, Alberta Transportation applied to the Alberta Natural Resources Conservation Board (NRCB) under Section 5 of *Natural Resources Conservation Board Act* for approval to construct and operate the Springbank Off-stream Reservoir Project (the Project). Alberta Transportation also applied to the Canadian Environmental Assessment Agency (CEA Agency) under the *Canadian Environmental Assessment Act, 2012* (CEAA 2012) for approval by the federal Minister of Environment and Climate Change.

On November 16, 2017 Alberta Transportation received correspondence from the CEA Agency, requesting additional information be provided within the Environmental Impact Statement (EIS) to achieve conformity with the *Guidelines for the Preparation of an Environmental Impact Statement pursuant to the Canadian Environmental Assessment Act, 2012 for the Springbank Offstream Reservoir Project*, issued to Alberta Transportation on August 10, 2016.

This updated EIS, dated March 2018, incorporates all additional information requested by the CEA Agency. The following table provides a concordance of where the additional information requested by CEA Agency is located within the EIS.

**SPRINGBANK OFF-STREAM RESERVOIR PROJECT
ENVIRONMENTAL IMPACT ASSESSMENT**

Preface to March 2018 EIS
March 2018

Table 1 Concordance Table to the November 16, 2017 Letter from CEAA

Item from the November 16, 2017 CEAA Letter	Information Required to Conform	Location in the March 2018 EIS
(1) EIS Summary	Provide an updated EIS Summary in English and French that incorporates any changes or revisions made to the EIS in response to information requirements outlined in this document and includes:	
	a) a concise description of all key components of the Project, related activities and alternative means assessment with sufficient detail to provide the reader with an understanding of the key Project activities, their potential interactions with the environment, and the potential adverse effects resulting from those interactions;	EIS Summary Section 3.0; Section 6.0
	b) a summary of the consultation conducted with Indigenous groups, the public, and government agencies, including a summary of the issues raised and the proponent's responses;	EIS Summary Section 4.0; Section 5.0; Attachment A; Attachment B
	c) a summary of the environmental and cumulative effects assessment for each VC, including a clear articulation of baseline information, anticipated changes to the environment, anticipated effects, mitigation measures and significance of residual effects. Ensure the key information used to arrive at conclusions is evident for readers; and	EIS Summary Section 6.0; Section 7.0

**SPRINGBANK OFF-STREAM RESERVOIR PROJECT
ENVIRONMENTAL IMPACT ASSESSMENT**

Preface to March 2018 EIS
March 2018

Table 1 Concordance Table to the November 16, 2017 Letter from CEAA

Item from the November 16, 2017 CEAA Letter	Information Required to Conform	Location in the March 2018 EIS
	d) additional information regarding follow-up and monitoring programs, including a description of the monitoring program, intervention mechanisms in the event of non-compliance with legal and environmental requirements, and any opportunities for the participation of Indigenous peoples in monitoring.	EIS Summary Section 8.0
(2) Concordance Table	a) Submit a comprehensive table of concordance which rigorously and accurately cross-references the information presented in the complete EIS with information requirements identified in the EIS Guidelines.	Volume 4 Appendix A
(3) Alternative Means of Carrying out the Project	a) Update the EIS and EIS Summary, as applicable, to include an alternative means assessment in accordance with the Agency’s Operational Policy statement entitled “Addressing “Purpose of” and “Alternative Means” under the Canadian Environmental Assessment Act, 2012” for the main Project components including the diversion system components, diversion channel, emergency spillway, off stream dam, lower outlet works, and for Project design components related the construction of instream components, sediment control, navigation or fish movement . The procedural steps to be addressed in the alternative means assessment include the following:	EIS Summary Section 3.6

**SPRINGBANK OFF-STREAM RESERVOIR PROJECT
ENVIRONMENTAL IMPACT ASSESSMENT**

Preface to March 2018 EIS
March 2018

Table 1 Concordance Table to the November 16, 2017 Letter from CEAA

Item from the November 16, 2017 CEAA Letter	Information Required to Conform	Location in the March 2018 EIS
	i. An analysis of alternative means for the main Project components and for Project design components described above;	Volume 1 Section 2.2
	ii. Identification of the evaluation criteria for the alternative means analysis; and	Volume 1 Section 2.2
	iii. An assessment of the environmental effects (as per Section 5 CEAA 2012) for the alternative means considered.	Volume 1 Section 2.2
(4) Atmospheric Environment	a) Provide a quantitative analysis (including dispersion modelling), to determine the potential impact of dust to the area in a post-flood scenario, including a comparison of estimated particulate matter levels (PM _{2.5} , PM ₁₀ , and TSP) to appropriate guidelines (including the CAAQS).	EIS Summary Section 6.1 Volume 3B Section 3.2; Section 15.4.2 Volume 4 Appendix E, Dispersion Modelling for Blown Sediment from the Off-Stream Reservoir Technical Data Report: Section 6.0

**SPRINGBANK OFF-STREAM RESERVOIR PROJECT
ENVIRONMENTAL IMPACT ASSESSMENT**

Preface to March 2018 EIS
March 2018

Table 1 Concordance Table to the November 16, 2017 Letter from CEAA

Item from the November 16, 2017 CEAA Letter	Information Required to Conform	Location in the March 2018 EIS
	<p>b) Provide additional evidence to demonstrate that the emission of dust from dried deposited sediment is effectively mitigated, including a description of specific mitigation measures and their proposed effectiveness, and follow-up and monitoring which will be implemented to verify the accuracy of the predictions /determine the effectiveness of the mitigation measures.</p>	<p>EIS Summary Section 6.1; Section 8.0</p> <p>Volume 3B Section 3.2.4.1</p> <p>Volume 3C Section 2.2</p> <p>Volume 4 Appendix C, Mitigation Measures Appendix E, Dispersion Modelling for Blown Sediment from the Off-Stream Reservoir Technical Data Report, Section 3.3</p>
	<p>c) Update the assessment of effects (direct, cumulative, and from accidents and malfunctions) for atmospheric environment and other VCs that are associated with changes to atmospheric environment (e.g., human health), and monitoring and follow-up programs, as appropriate.</p>	<p>EIS Summary Section 6.1</p> <p>Volume 3B Section 3.2.5; Section 15.4.2.3; Section 18.1</p> <p>Volume 3C Section 1.3.1; Section 1.3.11; Section 2.2.3</p> <p>Volume 3D Section 1.5.3; 1.5.6; 1.6.3</p>

**SPRINGBANK OFF-STREAM RESERVOIR PROJECT
ENVIRONMENTAL IMPACT ASSESSMENT**

Preface to March 2018 EIS
March 2018

Table 1 Concordance Table to the November 16, 2017 Letter from CEAA

Item from the November 16, 2017 CEAA Letter	Information Required to Conform	Location in the March 2018 EIS
		<p>Volume 4 Appendix C, Mitigation Measures</p> <p>Appendix E, Dispersion Modelling for Blown Sediment from the Off-Stream Reservoir Technical Data Report: Section 6.0</p> <p>Appendix O, Human Health Risk Assessment Technical Data Report, Section 6.3</p>
(5) Hydrogeology	<p>a) Provide a finalized version of the missing Appendix I, Hydrogeology Technical Data and make any associated updates to the EIS, including to Volumes 3A and 3B, Hydrogeology.</p>	<p>EIS Summary Section 6.3</p> <p>Volume 3A Section 5.4.2; Section 5.4.3</p> <p>Volume 3B Section 5.2.2; Section 5.2.3</p> <p>Volume 4 Appendix I, Hydrogeology Baseline Technical Data Report</p> <p>Appendix I, Hydrogeology Modelling Technical Data Report</p>
	<p>b) Provide a quantitative hydrogeology assessment during the construction and dry operations phase, using conceptual or preliminary designs for project components where necessary.</p>	<p>Volume 3A Section 5.4.1; Section 5.4.2; Section 5.4.3</p>

**SPRINGBANK OFF-STREAM RESERVOIR PROJECT
ENVIRONMENTAL IMPACT ASSESSMENT**

Preface to March 2018 EIS
March 2018

Table 1 Concordance Table to the November 16, 2017 Letter from CEAA

Item from the November 16, 2017 CEAA Letter	Information Required to Conform	Location in the March 2018 EIS
	<p>c) Update the effects assessments (direct, cumulative, and from accidents and malfunctions) for hydrogeology and other VCs that are associated with changes to hydrogeology, e.g., fish and fish habitat, migratory birds and their habitats, federal lands, and Aboriginal health including drinking water, and monitoring and follow-up programs, as appropriate.</p>	<p>EIS Summary Section 6.3; Section 9.0</p> <p>Volume 3A Section 5.4.2; Section 5.4.3; Section 15.3.3; Section 18.3</p> <p>Volume 3B Section 5.2.2; Section 5.2.3; Section 15.3.2; Section 18.3</p> <p>Volume 3C Section 1.2.2; Section 1.3.2; Section 2.4</p> <p>Volume 3D Section 1.5.4; Section 1.5.6</p> <p>Volume 4 Appendix C, Mitigation Measures</p>
(6) Water Management	<p>a) Update the EIS and EIS Summary, as applicable, to provide a detailed water management plan outlining how water will be managed through all stages of the Project (Construction through Post-Flood) to mitigate potential adverse effects from the Project on water quality.</p>	<p>EIS Summary Section 3.2.3</p> <p>Volume 1 Section 3.8; Attachment A</p>

**SPRINGBANK OFF-STREAM RESERVOIR PROJECT
ENVIRONMENTAL IMPACT ASSESSMENT**

Preface to March 2018 EIS
March 2018

Table 1 Concordance Table to the November 16, 2017 Letter from CEAA

Item from the November 16, 2017 CEAA Letter	Information Required to Conform	Location in the March 2018 EIS
(7) Surface Water Quality	a) Discuss all water quality parameters listed in the EIS Guidelines with regards to their potential to change in concentration during the flood and post-flood operations of the Project, including within the reservoir and during discharge back to the Elbow River.	<p>EIS Summary Section 6.5</p> <p>Volume 3B Section 7.1.1; Section 7.4.2</p> <p>Volume 4 Appendix K, Surface water Quality Technical Data Report, Section 2.0</p>
	b) Complete modelling for all parameters so that an accurate representation of the water quality being discharged back to the Elbow River is presented, or provide a robust rationale as to why estimates for certain parameters would not be required for the assessment of predicted effects.	<p>Volume 3B Section 7.4.1; Section 7.4.2; Section 7.1.1</p> <p>Volume 4 Appendix K, Surface Water Quality Technical Data Report</p>
	c) Update the assessment of effects (direct, cumulative, and from accidents and malfunctions) for surface water quality and other VCs that are associated with changes to surface water quality, and monitoring and follow-up programs, as appropriate.	<p>EIS Summary Section 6.5; Section 9.0</p> <p>Volume 3B Section 7.4.2; Section 7.4.3; Section 7.4.4; Section 7.4.5</p> <p>Volume 3C Section 1.3.4; Section 2.6</p>

**SPRINGBANK OFF-STREAM RESERVOIR PROJECT
ENVIRONMENTAL IMPACT ASSESSMENT**

Preface to March 2018 EIS
March 2018

Table 1 Concordance Table to the November 16, 2017 Letter from CEAA

Item from the November 16, 2017 CEAA Letter	Information Required to Conform	Location in the March 2018 EIS
		<p>Volume 3D Section 1.5.1; Section 1.5.2; Section 1.5.4; Section 1.5.5; Section 1.5.6</p> <p>Volume 4 Appendix C, Mitigation Measures</p>
<p>(8) Fish and Fish Habitat</p>	<p>a) Provide an assessment of fish abundance and distribution.</p>	<p>EIS Summary Section 6.6</p> <p>Volume 3A Section 8.2.2.1; Section 8.2.2.3; Section 8.2.2.4; Section 8.4.4</p> <p>Volume 3B Section 8.2.2.1; Section 8.2.4.1; Section 8.2.4.3; Figure 8.2-1</p> <p>Volume 4 Appendix M, Aquatic Ecology Technical Data Report</p>
	<p>b) Provide a description of the likely effects of the proposed work, undertaking or activity on fish that are part of a commercial, recreational or Aboriginal fishery, or on fish that support such a fishery, and the likely effects on the habitat of those fish. Include: the fish species likely to be affected and the life stages of the individuals of those species; and the extent and type of fish habitat that is likely to be affected.</p>	<p>EIS Summary Section 6.6</p> <p>Volume 3A Section 8.4.2; Section 8.4.4.1; Section 8.4.4.2; Section 8.4.4.3</p> <p>Volume 3B Section 8.2.2.1; Section 8.2.3.1; Section 8.2.4.1; Section 8.2.2.3; Section 8.2.3.3; Section 8.2.4.3</p>

**SPRINGBANK OFF-STREAM RESERVOIR PROJECT
ENVIRONMENTAL IMPACT ASSESSMENT**

Preface to March 2018 EIS
March 2018

Table 1 Concordance Table to the November 16, 2017 Letter from CEAA

Item from the November 16, 2017 CEAA Letter	Information Required to Conform	Location in the March 2018 EIS
	c) Provide maps/diagrams of fish habitat at the proposed work, undertaking, or activity, and the area likely to be affected by the proposed work, undertaking, or activity. Describe the extent and type of fish habitat likely to be affected.	<p>Volume 3A Section 8.2.2.2; Figure 8-1; Figure 8-2; Figure 8.2-2</p> <p>Volume 3B Section 8.2.2; Section 8.2.3</p>
	d) Update the assessment of effects (direct, cumulative, and from accidents and malfunctions) for fish and fish habitat and other related VCs, and monitoring and follow-up programs, as appropriate.	<p>EIS Summary Section 6.6; Section 9.0</p> <p>Volume 3A Section 8.4.4; Section 8.7.1; Section 8.7.2</p> <p>Volume 3B Section 8.2.2; Section 8.2.4; Section 8.5.1; Section 8.5.3</p> <p>Volume 3C Section 1.2.4; Section 1.3.5; Section 2.7</p> <p>Volume 3D Section 1.5.1; Section 1.5.2; Section 1.5.4; Section 1.5.6.2</p> <p>Volume 4 Appendix C, Mitigation Measures</p>

**SPRINGBANK OFF-STREAM RESERVOIR PROJECT
ENVIRONMENTAL IMPACT ASSESSMENT**

Preface to March 2018 EIS
March 2018

Table 1 Concordance Table to the November 16, 2017 Letter from CEAA

Item from the November 16, 2017 CEAA Letter	Information Required to Conform	Location in the March 2018 EIS
(9) Migratory Birds	a) Provide the information required by Section 6.2.3 and 6.3.2 of the EIS Guidelines for the migratory bird species identified in the EIS as potentially affected by the Project construction and operation, and update any associated analyses throughout the EIS, including cumulative effects, accidents and malfunctions, and current use of land and resources for traditional purposes.	<p>EIS Summary Section 6.9.2</p> <p>Volume 3A Section 11.1.2.2; Section 11.1.6; Section 11.4.7; Table 11-5; Section 11.4.7.2; Table 11-17; Table 11-18; Table 11-19; Section 11.4.7.1; Section 11.5; Section 11, Attachment A, Table A-1; Section 14.2; Section 14.3.2; Section 14.8; Section 18.9</p> <p>Volume 3B Section 11.3.8.1; Table 11-9; Section 11.3.8.2; Table 11-1; Section 11, Attachment A, Table A-1; Section 14.2.2; Section 14.6; Section 18.9</p> <p>Volume 3C Section 1.2.7.2; Section 1.3.8.2; Section 1.4</p> <p>Volume 3D Table 1-1; Section 1.5.1 to Section 1.5.4; Section 1.5.6</p>

**SPRINGBANK OFF-STREAM RESERVOIR PROJECT
ENVIRONMENTAL IMPACT ASSESSMENT**

Preface to March 2018 EIS
March 2018

Table 1 Concordance Table to the November 16, 2017 Letter from CEAA

Item from the November 16, 2017 CEAA Letter	Information Required to Conform	Location in the March 2018 EIS
	<p>b) Alternately, provide a robust rationale for how the assessment of effects to two migratory bird species is sufficiently representative of Project effects to migratory birds. For example, describe how the information provided through habitat suitability modelling for five key indicator Wildlife species (EIS Section 11, Vol 3A/3B, and Appendix H) supports conclusions on significance of the Project’s residual effects to all migratory birds (e.g., birds listed under the <i>Migratory Birds Convention Act</i>) and bird species at risk.</p>	<p>Volume 3A Section 11.1.2; Section 11, Table 11-1; Section 11.4.7</p> <p>Volume 3B Section 11.3.3.3; Section 11.3.4.3; Section 11.3.8.2</p>
	<p>c) Describe specific mitigation measures which would be implemented to address potential effects, assess residual effects to migratory birds, and describe follow-up and monitoring which will be implemented to verify the accuracy of the predictions and assess the effectiveness of any mitigation measures.</p>	<p>EIS Summary Section 6.9.2</p> <p>Volume 3A Section 11.4.2.2; Section 11.4.3.2; Section 11.4.4.2; Section 11.4.7.1; Section 11.4.7.2; Table 11-10; Table 11-1</p> <p>Volume 3B Section 11.3.2.2; Section 11.3.4.2; 11.3.8.2; Table 11-10; Table 11-1</p> <p>Volume 3C Section 1.2.7.2; Section 1.3.8.2; Section 2.10</p> <p>Volume 4 Appendix C, Mitigation Measures</p>

**SPRINGBANK OFF-STREAM RESERVOIR PROJECT
ENVIRONMENTAL IMPACT ASSESSMENT**

Preface to March 2018 EIS
March 2018

Table 1 Concordance Table to the November 16, 2017 Letter from CEEA

Item from the November 16, 2017 CEAA Letter	Information Required to Conform	Location in the March 2018 EIS
(10) Species at Risk	<p>a) Provide species-specific information regarding potential effects of the Project on federally listed species at risk and those species listed by COSEWIC (21 species in total).</p>	<p>EIS Summary Section 6.9.2</p> <p>Volume 3A Section 11.1.4; Section 11.4.7.3; Section 11, Attachment A, Table A-1</p> <p>Volume 3B Section 11.1.1; Section 11.3.8.3; Section 11, Attachment A, Table A-1</p> <p>Volume 4 Appendix H, Wildlife and Biodiversity Technical Data Report, Section 3.8, Table 3-12</p>
	<p>b) Provide proposed mitigation measures to avoid effects and follow-up and monitoring commitments for SARA listed and COSEWIC assessed species noted in the EIS to support the description of potential direct and indirect effects to these species. Consider available recovery strategy documents in these assessments.</p>	<p>EIS Summary Section 6.9.2</p> <p>Volume 3A Section 11.4.2.2; Section 11.4.4.2; Section 11, Attachment A, Table A-1</p> <p>Volume 3B Section 11.3.2.2; Section 11.3.4.2, Section 11, Attachment A, Table A-1</p> <p>Volume 3C Section 1.2.7.3; Section 1.3.8.3; Section 2.10</p> <p>Volume 4 Appendix C, Mitigation Measures</p>

**SPRINGBANK OFF-STREAM RESERVOIR PROJECT
ENVIRONMENTAL IMPACT ASSESSMENT**

Preface to March 2018 EIS
March 2018

Table 1 Concordance Table to the November 16, 2017 Letter from CEEA

Item from the November 16, 2017 CEEA Letter	Information Required to Conform	Location in the March 2018 EIS
	c) Update any associated analyses throughout the EIS, e.g., cumulative effects, accidents and malfunctions, and current use of land and resources for traditional purposes.	<p>EIS Summary Section 6.9; Section 7.4; Section 7.5; Section 8.0</p> <p>Volume 3A Section 11.1.4; Section 11.4.7.3; Section 11, Attachment A, Table A-1; Section 14.2; Section 14.3.2; Section 14.8; Section 18.9</p> <p>Volume 3B Section 11.1.1; Section 11.3.8.3; Section 11, Attachment A, Table A-1; Section 14.2.2; Section 14.6; Section 18.9</p> <p>Volume 3C Section 1.2.7.3; Section 1.3.8.3;</p> <p>Volume 3D Section 1.5.1. to Section 1.5.4; Section 1.5.6; Table 1-1</p>
(11) Traditional Territories	a) Update the EIS and EIS Summary, as applicable, to provide information (e.g., maps and descriptions) on the traditional territories for each Indigenous group identified in Part 2, Section 5.1 of the EIS Guidelines, and a rationale for any exclusions.	<p>Volume 3A Section 14.2.2.1; Section 14.2.2.2; Section 14.2.2.3; Section 14.2.2.4; Section 14.2.2.5; Section 14.2.2.6; Section 14.2.2.7; Section 14.2.2.8; Section 14.2.2.9; Section 14.2.2.10; Section 14.2.2.11; Section 14.2.2.12; Section 14.2.2.13</p>

**SPRINGBANK OFF-STREAM RESERVOIR PROJECT
ENVIRONMENTAL IMPACT ASSESSMENT**

Preface to March 2018 EIS
March 2018

Table 1 Concordance Table to the November 16, 2017 Letter from CEAA

Item from the November 16, 2017 CEAA Letter	Information Required to Conform	Location in the March 2018 EIS
(12) Engagement Activities	a) Respecting any confidentiality commitments made to Indigenous groups, provide a report of all proponent engagement activities to date, including records of key issues, concerns and recommendations shared by each Indigenous group and the follow-up responses and outcomes.	<p>EIS Summary Section 5; Attachment B</p> <p>Volume 1 Section 7.1; Section 7.2; Section 7.4; Section 7.5</p> <p>Volume 3A Section 14.1.2; Section 14.1.7; Section 14.2; Section 14.3; Section 14.7; Section 14.8</p> <p>Volume 3B Section 14.2; Section 14.5; Section 14.6.</p> <p>Volume 4 Appendix B, Consultation and Engagement</p>

**SPRINGBANK OFF-STREAM RESERVOIR PROJECT
ENVIRONMENTAL IMPACT ASSESSMENT**

Preface to March 2018 EIS
March 2018

Table 1 Concordance Table to the November 16, 2017 Letter from CEAA

Item from the November 16, 2017 CEAA Letter	Information Required to Conform	Location in the March 2018 EIS
(13) Aboriginal Peoples - Current Use of Land and Resources	a) Confirm whether permission from Indigenous groups was sought to validate the baseline traditional use information presented in the EIS. If permission was not granted by an Indigenous group, provide reasons why. Provide documentation of the validation process including any discrepancies in the views of the proponent and Indigenous groups on the current use information used in the EIS.	EIS Summary Section 5; Attachment B Volume 1 Section 7 Volume 3A Section 14.2.2.1; Section 14.2.2.2; Section 14.2.2.3; Section 14.2.2.4; Section 14.2.2.5; Section 14.2.2.6; Section 14.2.2.7; Section 14.2.2.8; Section 14.2.2.9; Section 14.2.2.10; Section 14.2.2.11; Section 14.2.2.12; Section 14.2.2.13 Volume 3B Section 14.2.2.2
	b) As an addendum to the baseline information presented in Vol 3A, Section 14.2 of the EIS, describe the rationale for selecting each study cited in the literature review.	Volume 3A Section 14.2.1; Section 14, Attachment A
	c) Should any traditional use reports be filed prior to the submission of the revised EIS, amend the EIS to incorporate findings of these additional traditional use reports.	Volume 3A Section 14.1.2; Section 14.2.1

**SPRINGBANK OFF-STREAM RESERVOIR PROJECT
ENVIRONMENTAL IMPACT ASSESSMENT**

Preface to March 2018 EIS
March 2018

Table 1 Concordance Table to the November 16, 2017 Letter from CEAA

Item from the November 16, 2017 CEAA Letter	Information Required to Conform	Location in the March 2018 EIS
(14) Aboriginal Peoples – Country Foods	<p>a) Provide an assessment of country foods, describing what is available in all areas to be impacted by the Project, include predicted rates of consumption, and assess which country foods may be contaminated by Project activities throughout all Project phases, for example through airborne dust deposition on plants.</p>	<p>EIS Summary Section 6.12; Section 6.13; Section 6.16; Section 6.17</p> <p>Volume 3A Table 8-4; Table 10-7; Section 11.1.2.2; Section 14.2.1; Section 14.2.4; Section 14.3.2; Table 14-3; Table 15-5; Section 15.2.3; Section 15.3.2; Section 15.7</p> <p>Volume 3B Section 14.2.2; Section 15.2.3; Section 15.3.3</p> <p>Volume 4 Appendix H, Wildlife Technical Data Report, Table 3-12 Appendix O, HHRA TDR, Table 2-3</p>
	<p>b) Substantiate any conclusions and clearly state any assumptions, if secondary sources such as literature-based information are used, to determine baseline rates of consumption and predicted effects.</p>	<p>Volume 3A Section 14.3.2; Section 15.2.3; Section 15.4.1.</p> <p>Volume 3B Section 14.2.2</p>
	<p>c) Update the assessment of effects (direct, cumulative, and from accidents and malfunctions), other relevant VCs, and monitoring and follow-up programs, as appropriate.</p>	<p>Volume 3C Section 1.2.9.2; Section 1.3.10.2</p> <p>Volume 3D Section 1.5.2; Section 1.5.3; Section 1.5.4</p>

**SPRINGBANK OFF-STREAM RESERVOIR PROJECT
ENVIRONMENTAL IMPACT ASSESSMENT**

Preface to March 2018 EIS
March 2018

Table 1 Concordance Table to the November 16, 2017 Letter from CEAA

Item from the November 16, 2017 CEAA Letter	Information Required to Conform	Location in the March 2018 EIS
<p>(15) Aboriginal Peoples – Drinking and Recreational Waters</p>	<p>a) Provide a description, including any maps, of sources and use of drinking and recreational water (permanent, seasonal, periodic, or temporary), including springs referred to in the EIS, used by Indigenous groups.</p>	<p>EIS Summary Section 5.0; Section 6.3; Section 6.12; Section 6.13; Section 6.17</p> <p>Volume 3A Section 14.1.2; Section 14.2.4; Section 14.2.5; Section 14.3.2; Section 14.8.4; Section 14.8.5; Section 14.8.12; Section 15.2.2</p> <p>Volume 3B Section 14.2.2; Section 14.6.4; Section 15.2.2</p>
	<p>b) Provide an assessment of potential effects of changes to drinking and recreational waters on Indigenous peoples for all phases of the Project.</p>	<p>Volume 3A Section 14.3.2; Section 14.3.3; Section 15.3.3</p> <p>Volume 3B Section 14.2.2; Section 14.2.3; Section 14.6.4; Section 15.3.2</p>
	<p>c) Update the assessment of effects (direct, cumulative, and from accidents and malfunctions), other relevant VCs, and monitoring and follow-up programs, as appropriate.</p>	<p>Volume 3C Section 1.2.9.2; Section 1.3.10.2</p>

**SPRINGBANK OFF-STREAM RESERVOIR PROJECT
ENVIRONMENTAL IMPACT ASSESSMENT**

Preface to March 2018 EIS
March 2018

Table 1 Concordance Table to the November 16, 2017 Letter from CEAA

Item from the November 16, 2017 CEAA Letter	Information Required to Conform	Location in the March 2018 EIS
(16) Aboriginal Peoples – Human Health and Socio-economic Conditions	a) Provide an updated receptors list identifying the locations where Indigenous receptors are present.	<p>Volume 3A Table 3-20; Table 3-21; Section 4.2.1; Table 4-3; Section 4.4.1.1; Section 4.4.2.3; Table 15-9</p> <p>Volume 3B Table 15-5</p> <p>Volume 4 Appendix E, Attachment 3C, Table 3C-2</p>
	b) Clearly describe the location and distance from the project site(s) of each potential human receptor (permanent, seasonal or temporary), considering the different types of land uses (e.g. residential, recreational, industrial, etc.); and identifying all sensitive receptor locations (e.g. schools, hospitals, retirement complexes or assisted care homes).	<p>Volume 3A Table 4-3; Table 15-9</p>

**SPRINGBANK OFF-STREAM RESERVOIR PROJECT
ENVIRONMENTAL IMPACT ASSESSMENT**

Preface to March 2018 EIS
March 2018

Table 1 Concordance Table to the November 16, 2017 Letter from CEAA

Item from the November 16, 2017 CEAA Letter	Information Required to Conform	Location in the March 2018 EIS
	c) Update the assessment of effects of the Project to human health in a manner that differentiates between the Indigenous and non-Indigenous population, including any seasonal and temporary Indigenous receptors (e.g. cabins, camps).	<p>EIS Summary Section 6.2; Section 6.13</p> <p>Volume 3A Section 3.4.5; Section 3.4.6; Section 4.4.1.1; Section 4.4.2.3; Section 15.3; Section 15.4; Section 15.5</p> <p>Volume 3B Section 15.4; Section 15.5; Section 4.2.2</p> <p>Volume 4 Appendix O, HHRA TDR, Table 3-1; Section 6.3; Section 6.4</p>
	d) Update the assessment of effects of the Project on socio-economic conditions in a manner that differentiates between the Indigenous and non-Indigenous commercial activities and recreational uses of the Elbow River.	<p>EIS Summary Section 6.12</p> <p>Volume 3A Section 14.1.2; Section 14.2.5; Section 14.2.7; Section 14.3.3; Section 14.3.5</p> <p>Volume 3B Section 14.1.2; Section 14.2.3; Section 14.2.5</p>

**SPRINGBANK OFF-STREAM RESERVOIR PROJECT
ENVIRONMENTAL IMPACT ASSESSMENT**

Preface to March 2018 EIS
March 2018

Table 1 Concordance Table to the November 16, 2017 Letter from CEAA

Item from the November 16, 2017 CEAA Letter	Information Required to Conform	Location in the March 2018 EIS
(17) Regulatory framework and the role of government; Federal Decisions	a) A description of any federal permits, approvals or funding that may be applicable to the carrying out of the Project or associated activities such as under the <i>Fisheries Act</i> or the <i>Navigation Protection Act</i> , and the specific Project components for which these may be required.	EIS Summary Section 2.0 Volume 1 Section 1.4
(18) Federal Lands	a) A description of potential effects to the Tsuut'ina Reserve caused by the Project from predicted changes to the environment, including an assessment of any other VCs of importance or VCs Tsuut'ina Nation has identified that are not already covered in other subsections of the EIS guidelines that may be affected by the changes to the environment.	EIS Summary Section 6.16 Volume 3A Section 18 Volume 3B Section 18
	b) A description of specific mitigation measures which would be implemented.	Volume 3A Section 18 Volume 3B Section 18
	c) A description of follow-up and monitoring which will be implemented to verify the accuracy of the predictions and determine the effectiveness of any mitigation measures.	Volume 3A Section 18 Volume 3B Section 18

**SPRINGBANK OFF-STREAM RESERVOIR PROJECT
ENVIRONMENTAL IMPACT ASSESSMENT**

Preface to March 2018 EIS
March 2018

Table 1 Concordance Table to the November 16, 2017 Letter from CEAA

Item from the November 16, 2017 CEAA Letter	Information Required to Conform	Location in the March 2018 EIS
(19) Accidents and Malfunctions	a) Provide information for all accident and malfunction scenarios including details on expected quantity, mechanism, rate, form and characteristics of each contaminant or other material likely to be released into the environment during the accident and malfunction events presented in the EIS.	EIS Summary Section 6.17 Volume 3D Section 1
	b) Provide detailed information on any site-specific sensitivities and potential pathways of effects as part of the assessment.	EIS Summary Section 6.17 Volume 3D Section 1.4
	c) Provide supporting information that outlines contingency and emergency response procedures including but not limited to: response capacity, expected response times, and spill notification procedures to regulators and the public.	EIS Summary Section 6.17 Volume 3D Section 1.3 Volume 4 Supporting Documentation: Document 4, Document 8

**SPRINGBANK OFF-STREAM RESERVOIR PROJECT
ENVIRONMENTAL IMPACT ASSESSMENT**

Preface to March 2018 EIS
March 2018

Table 1 Concordance Table to the November 16, 2017 Letter from CEAA

Item from the November 16, 2017 CEAA Letter	Information Required to Conform	Location in the March 2018 EIS
(20) Mitigation	<p>a) Ensure all mitigation measures identified in the EIS apply the requirements of the EIS Guidelines and provide updated mitigation measures for all phases of the Project such that they are written as specific commitments that clearly describe how they will be implemented. The Agency recommends listing all mitigation measures for the Project in a table format that can be updated as the environmental assessment process proceeds.</p>	<p>EIS Summary Section 6.1 to Section 6.15</p> <p>Volume 3A Section 3.4.4; Section 4.4.2.2; Section 5.4.2.3; Section 5.4.3.2; Section 6.4; Section 7.4.2.2; Section 8.4.3; Section 9.4.2.2; Section 9.4.3.2; Section 10.3.1; Table 10-11; Section 11.4.2.2; Section 11.4.3.2; Section 11.4.4.2; Section 11.4.5.2; Section 11.4.7.1; Section 11.4.7.2; Section 11, Attachment A, Table A-1; Section 12.4.2.2; Section 12.4.3.2; Section 13.3.1; Section 13.3.2; Section 14.3.2.2; 14.3.3.2; 14.3.4.2; Section 15.4.3; Section 16.4.2.2; Section 17.4.1.4; Section 17.4.2.4; Section 17.4.3.4; Table 17-24; Section 18.0</p> <p>Volume 3B Section 3.3.4; Section 5.2.2.2; Section 5.2.3.2; Section 8.2.2.2; Section 8.2.3.2; Section 8.2.4.2; Section 9.2.2.2; Section 9.2.3.2; Section 10.1.1; Section 11.3.2.2; Section 11.3.3.2; Section 11.3.4.2; Section 11.3.5.2; Section 11.3.6.2; Section 11.3.8; Section 11, Attachment A, Table A-1; Section 12.2.2.2; Section 12.2.3.2; Section 13.2; Section 14.2.2.2; Section 14.2.3.2; Section 14.2.4.2; Section 15.4.2.2; Section 16.2.2.2; Section 17.2.2.2; Section 17.3.1.4; Table 17-3; Section 18.0</p> <p>Volume 3C Section 1.2; Section 1.3 Section 2.1.3; Section 2.2.3; Section 2.5.3; Section 2.6.3; Section 2.8.3; Section 2.9.3; Section 2.11.3</p>

**SPRINGBANK OFF-STREAM RESERVOIR PROJECT
ENVIRONMENTAL IMPACT ASSESSMENT**

Preface to March 2018 EIS
March 2018

Table 1 Concordance Table to the November 16, 2017 Letter from CEAA

Item from the November 16, 2017 CEAA Letter	Information Required to Conform	Location in the March 2018 EIS
	<p>b) Provide details of any standard mitigation measures, techniques and best management practices that will be used, and adequately cross-reference these within the EIS if the information is contained in appendices. Include specific erosion and sedimentation control practices that are to be used during construction.</p>	<p>Volume 3D Section 1.6</p> <p>Volume 4 Appendix C, Mitigation Measures Appendix D, Soil Handling and Revegetation Mitigation Measures Supporting Documentation: Document 4, 5, 6, 7, 8, 9, 10, 11, 12, 13, 14, 15</p>
	<p>c) Discuss the level of confidence that the proposed mitigation measures will be effective.</p>	<p>Volume 3A Section 3.6; Section 4.6; Section 5.6; Section 6.7; Section 7.6; Section 8.6; Section 9.6; Section 10.7; Section 11.6; Section 12.6; Section 13.6; Section 14.6; Section 15.6; Section 16.6; Section 17.6</p> <p>Volume 3B Section 3.4; Section 4.4; Section 5.4; Section 6.6; Section 7.6; Section 8.4; Section 9.4; Section 10.4; Section 11.5; Section 12.4; Section 13.4; Section 14.4; Section 15.6; Section 16.4; Section 17.5</p> <p>Volume 3C Section 1.2.1.7; Section 1.2.4.5; Section 1.2.5.5; Section 1.2.6.5; Section 1.2.7.1; Section 1.2.7.2; Section 1.2.7.3; Section 1.2.8.5; Section 1.2.9.6; Section 1.2.11.5; Section 1.3.1.5; Section 1.3.7.4; Section 1.3.8.1; Section 1.3.8.2; Section 1.3.8.3; Section 1.3.10.5; Section 1.3.12.5</p>

**SPRINGBANK OFF-STREAM RESERVOIR PROJECT
ENVIRONMENTAL IMPACT ASSESSMENT**

Preface to March 2018 EIS
March 2018

Table 1 Concordance Table to the November 16, 2017 Letter from CEAA

Item from the November 16, 2017 CEAA Letter	Information Required to Conform	Location in the March 2018 EIS
	d) Identify who is responsible for the implementation of the mitigation measures and the system of accountability, including a discussion of the mechanisms the proponent would use to require its contractors and sub-contractors to comply with commitments, policies, auditing and enforcement programs.	Volume 4 Appendix C, Mitigation Measures Supporting Documentation: Document 4, 5, 6, 7, 8, 9, 10, 11, 12, 13, 14, 15
	e) Update analyses and determinations of significance, as appropriate, based on revised mitigation measures.	Not applicable
(21) Significance of residual effects	a) Throughout the EIS and in Volume 3D, Table 3-1 'Summary of Environmental Effects', update the analysis and determinations of significance of residual effects, as appropriate, to include the criteria of timing.	Volume 3A Section 3.4.8; Table 3-23; Section 4.4.1.1; Table 4-15; Table 5.2; Section 6.5.2; Section 6.5.3; Table 6-12; Section 7.4.2.3; Table 7-4; Section 8.4.3.1; Section 9.4.3.3; Table 9-16; Section 10.4.2; Section 10.4.3; Section 10.4.4.1; Section 10.4.4.2; Section 10.4.5; Table 10-14; Section 10.6; Section 11.4.2.3; Section 11.4.3.2; Section 11.4.3.3; Section 11.4.4.3; Section 11.4.5.3; Table 11-14; Section 11.4.7.1; 11.4.7.2; Table 11-17; Section 11.4.7.2; 11.4.7.3; Table 11-19; Section 11.4.7.4; Section 11, Attachment A, Table A-1; Section 12.4.2.3; 12.4.3.3; Table 12-6; Section 13.4; Section 14.3.3.3; Section 14.3.4.3; Table 14-8; Section 15.3, Table 15-2, Table 15-16; Section 16.4.3; Table 16-7; Section 17.4.1.5; Section 17.4.2.5; Table 17-24; Section 17.4.3.5; Table 17-27

**SPRINGBANK OFF-STREAM RESERVOIR PROJECT
ENVIRONMENTAL IMPACT ASSESSMENT**

Preface to March 2018 EIS
March 2018

Table 1 Concordance Table to the November 16, 2017 Letter from CEAA

Item from the November 16, 2017 CEAA Letter	Information Required to Conform	Location in the March 2018 EIS
		<p>Volume 3B Section 3.2.8; Table 3-2; Section 4.2.2; Table 4-2; Section 5.2.2.3; Table 5-3; Section 6.4.2.1; Section 6.4.3.1; Table 6-11; Section 7.4.2; Section 7.4.3; Section 7.4.4; Table 7-4; Section 7.4.5; Section 8.2.1; Section 8.2.4.3; Table 8-2; Section 9.2.4; Table 9-7; Section 10.2.2; Section 10.2.3.1; Section 10.2.3.2; Section 10.2.4; Table 10-13; Section 11.3.2.3; Section 11.3.3.3; Section 11.3.4.3; Section 11.3.6.3; Section 11.3.8.3; Table 11-7; Table 11-9; Table 11-11; Section 12.2.2.3; 12.2.3.3; Table 12-3; Section 15.4.2.1; Table 15-6; Section 16.2.3; Table 16-2; Section 17.5; Table 17-8</p> <p>Volume 3D Section 3.0; Table 3-1</p>
	b) Throughout the EIS and in Volume 3D, Table 3-1 'Summary of Environmental Effects', update the analysis and determinations of significance of residual effects, as appropriate, to include Aboriginal traditional knowledge and perspectives.	<p>Volume 3A Section 3.1.2; Section 4.1.2; Section 5.1.2; Section 6.1.2; Section 7.1.2; Section 8.1.2; Section 9.1.2; Section 10.1.2; Section 11.1.3; Section 11.5; Section 12.1.2; Section 13.1.2; Section 14.1.3; Section 14.8; Section 15.1.2; Section 16.1.2; Section 17.1.2</p>
(22) Cumulative Effects Assessment	a) Complete a cumulative effects assessment of the flood and post flood operations that includes consideration of modifications to overlapping infrastructure (pipelines, transmission lines, roads), other flood mitigation works, and reflects reasonably foreseeable projects in regional and community development plans. The assessment should evaluate the cumulative effects with and without the Project.	<p>EIS Summary Section 7.5</p> <p>Volume 3C Section 1.3</p>

**SPRINGBANK OFF-STREAM RESERVOIR PROJECT
ENVIRONMENTAL IMPACT ASSESSMENT**

Preface to March 2018 EIS
March 2018

Table 1 Concordance Table to the November 16, 2017 Letter from CEAA

Item from the November 16, 2017 CEAA Letter	Information Required to Conform	Location in the March 2018 EIS
	b) Complete a cumulative effects assessment for all phases of the Project for migratory birds and species at risk.	<p>EIS Summary Section 7.4; Section 7.5</p> <p>Volume 3C Section 1.2.7.2; Section 1.2.7.3; Section 1.3.8.2; Section 1.3.8.3</p>
	a) Where appropriate, provide a quantitative analysis of cumulative effects for fish and fish habitat, including bull trout, cutthroat trout and other valued fish species; migratory birds; species at risk; and Indigenous peoples. Provide an explanation if a quantitative analysis is not undertaken on these items.	<p>Volume 3C Section 1.2.4; Section 1.2.9; Section 1.3.5; Section 1.3.10</p>
	c) Complete a cumulative effects assessment for accidents and malfunctions during construction, flood, and post flood operations for overlapping existing and potential future projects including pipelines, transmission lines, and road infrastructure.	<p>EIS Summary Section 6.17</p> <p>Volume 3D Section 1.7</p>
	d) Describe specific mitigation measures which would be implemented to address potential effects, and follow-up and monitoring which will be implemented to verify the accuracy of the predictions and determine the effectiveness of the mitigation measures.	<p>EIS Summary Section 6.17; Section 8.0</p> <p>Volume 3C Section 1.2; Section 1.3; Section 2.1.2</p>

**SPRINGBANK OFF-STREAM RESERVOIR PROJECT
ENVIRONMENTAL IMPACT ASSESSMENT**

Preface to March 2018 EIS
March 2018

Table 1 Concordance Table to the November 16, 2017 Letter from CEAA

Item from the November 16, 2017 CEAA Letter	Information Required to Conform	Location in the March 2018 EIS
(23) Follow-up and Monitoring	a) Present a preliminary follow-up program, including any areas where scientific uncertainty exists in the prediction of effects. As described in the EIS Guidelines, include details on a description of the objectives of the follow-up program and the VCs targeted by the program, the number of follow-up studies planned as well as their main characteristics (list of the parameters to be measured, planned implementation timetable, etc.), intervention mechanism used in the event that an unexpected deterioration of the environment is observed.	EIS Summary Section 8.0 Volume 3C Section 2
	b) Present an outline of the preliminary environmental monitoring program, including a description of the characteristics of the monitoring program where foreseeable, guidelines for preparing monitoring reports (number, content, frequency, format), and opportunities for the participation of Indigenous peoples in monitoring during each phase of the Project.	EIS Summary Section 8.0 Volume 3C Section 2
	c) Provide a detailed rationale where the EIS indicates that no follow-up or monitoring is proposed.	EIS Summary Section 8.0 Volume 3C Section 2.11; Section 2.13; Section 2.15; Section 2.16

**SPRINGBANK OFF-STREAM RESERVOIR PROJECT
ENVIRONMENTAL IMPACT ASSESSMENT**

Preface to March 2018 EIS
March 2018

Table 1 Concordance Table to the November 16, 2017 Letter from CEAA

Item from the November 16, 2017 CEAA Letter	Information Required to Conform	Location in the March 2018 EIS
(24) Impacts to Rights	a) Using updated information that incorporates any changes or revisions made to the effects assessment of biophysical VCs required in this Annex:	
	i. Provide an assessment of the Project's potential impacts to potential or established Aboriginal or treaty rights for each of the Project components and physical activities for all project phases.	<p>EIS Summary Section 6.12</p> <p>Volume 3A Section 14.1.3.1; Section 14.1.7; Section 14.2.4; Section 14.2.5; Section 14.2.6; Section 14.3.4; Section 14.5; Section 14.8</p> <p>Volume 3B Section 14.1.1; Section 14.2.2</p>
	ii. Include the potential adverse impacts to potential or established Aboriginal or treaty rights that may result from the residual and cumulative environmental effects caused by the Project.	<p>EIS Summary Section 6.12</p> <p>Volume 3A Section 14.1.3.1; Section 14.1.7; Section 14.2.4; Section 14.2.5; Section 14.2.6; Section 14.3.4; Section 14.5; Section 14.8</p> <p>Volume 3B Section 14.1.1; Section 14.2.2.</p>

**SPRINGBANK OFF-STREAM RESERVOIR PROJECT
ENVIRONMENTAL IMPACT ASSESSMENT**

Preface to March 2018 EIS
March 2018

Table 1 Concordance Table to the November 16, 2017 Letter from CEEA

Item from the November 16, 2017 CEEA Letter	Information Required to Conform	Location in the March 2018 EIS
	iii. Include the perspectives of Indigenous groups on the assessment of impacts to potential or established Aboriginal or treaty rights that may result from the residual and cumulative environmental effects caused by the Project and a description of how the assessment considered Indigenous comments.	<p>Volume 3A Section 14.1.3.1; Section 14.1.7; Section 14.2.4; Section 14.2.5; Section 14.2.6; Section 14.3.4; Section 14.5; Table 14-7; Section 14.8</p> <p>Volume 3B Section 14.1.1; Section 14.2.2</p>
	b) Review all measures identified to mitigate potential adverse impacts to potential or established Aboriginal or treaty rights and ensure that the mitigation measures are written as specific commitments that clearly describe how the proponent intends to implement them.	<p>Volume 3A Section 14.3.2.2; Section 14.3.3.2; Section 14.3.4.2; Section 14.5</p> <p>Volume 3B Section 14.2.2.2; Section 14.2.3.2; Section 14.2.4.2</p>
	c) Provide a discussion of the views of Indigenous groups on the effectiveness of the mitigation or accommodation measures.	<p>Volume 3A Section 14.2.1; Section 14.2.2.1; Section 14.2.2.2; Section 14.2.2.3; Section 14.2.2.4; Section 14.2.2.5; Section 14.2.2.6; Section 14.2.2.7; Section 14.2.2.8; Section 14.2.2.9; Section 14.2.2.10; Section 14.2.2.11; Section 14.2.2.12; Section 14.2.2.13; Section 14.8.1; Section 14.8.2; Section 14.8.3; Section 14.8.4; Section 14.8.5; Section 14.8.6; Section 14.8.7; Section 14.8.8; Section 14.8.9; Section 14.8.10; Section 14.8.11; Section 14.8.12; Section 14.8.13</p> <p>Volume 3B Section 14.2.2.2</p>