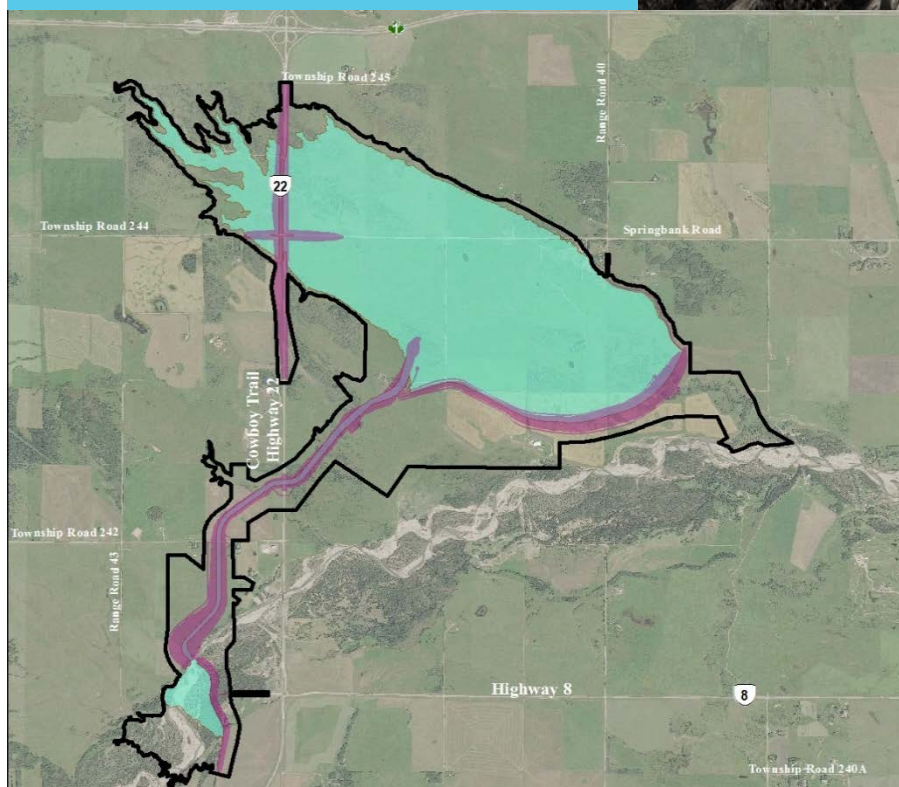


Springbank Off-stream Reservoir Project

Environmental Impact Assessment



Volume 3B Effects Assessment (Flood and Post-Flood Operations)

March 2018

**SPRINGBANK OFF-STREAM RESERVOIR PROJECT
ENVIRONMENTAL IMPACT ASSESSMENT
VOLUME 3B: EFFECTS ASSESSMENT (FLOOD AND POST-FLOOD OPERATIONS)**

Introduction
March 2018

Table of Contents

ABBREVIATIONS	1.ii
1.0 INTRODUCTION	1.1

**SPRINGBANK OFF-STREAM RESERVOIR PROJECT
ENVIRONMENTAL IMPACT ASSESSMENT
VOLUME 3B: EFFECTS ASSESSMENT (FLOOD AND POST-FLOOD OPERATIONS)**

Introduction
March 2018

Abbreviations

EIA	environmental impact assessment
the Project	Springbank Off-stream Reservoir Project
VC	valued component

**SPRINGBANK OFF-STREAM RESERVOIR PROJECT
ENVIRONMENTAL IMPACT ASSESSMENT
VOLUME 3B: EFFECTS ASSESSMENT (FLOOD AND POST-FLOOD OPERATIONS)**

Introduction
March 2018

1.0 INTRODUCTION

This volume of the Springbank Off-stream Reservoir Project EIA addresses the environmental effects of the flood and post-flood phases of the Project.

The scope of the assessment is described in Volume 3A. Any changes to the scope for the flood and post-flood phases are described. These changes may involve changes in the definition of effects characteristics or the addition of concerns from the public and Indigenous groups specific to the flood and post-flood phases.

The existing conditions of the VC are described in Volume 3A. Existing conditions for the flood and post-flood phases, specific to the assessment of effects on some VCs, are described.

The Project interactions with the VC are described. The components and activities that may interact during the flood and post-flood phases are:

- reservoir filling
- retention of water in the reservoir
- soil drainage and drying
- reservoir drainage and maintenance
- reservoir sediment partial cleanup
- drained reservoir
- channel maintenance
- road and bridge maintenance
- flood damage cleanup and restoration

The residual effects on the VC are addressed. As with the assessment of the construction and dry operations phase, this is part of the application case. It is accomplished through the description of how project interactions may affect the VC, applying mitigation measures to address the effects, and describing the residual or left-over effects that follow application of the mitigation measures.

The residual effects are compared to defined standards to determine the significance of the effects on the VC.

**SPRINGBANK OFF-STREAM RESERVOIR PROJECT
ENVIRONMENTAL IMPACT ASSESSMENT
VOLUME 3B: EFFECTS ASSESSMENT (FLOOD AND POST-FLOOD OPERATIONS)**

Introduction
March 2018

The confidence in the conclusion of the effect on the VC is stated. Factors affecting the confidence in the conclusions are the quality or quantity of the data used in the assessment, expected effectiveness of mitigation and enhancement measures and the assumptions made in assessing the effects.

A summary or conclusions based on the assessment is presented.