

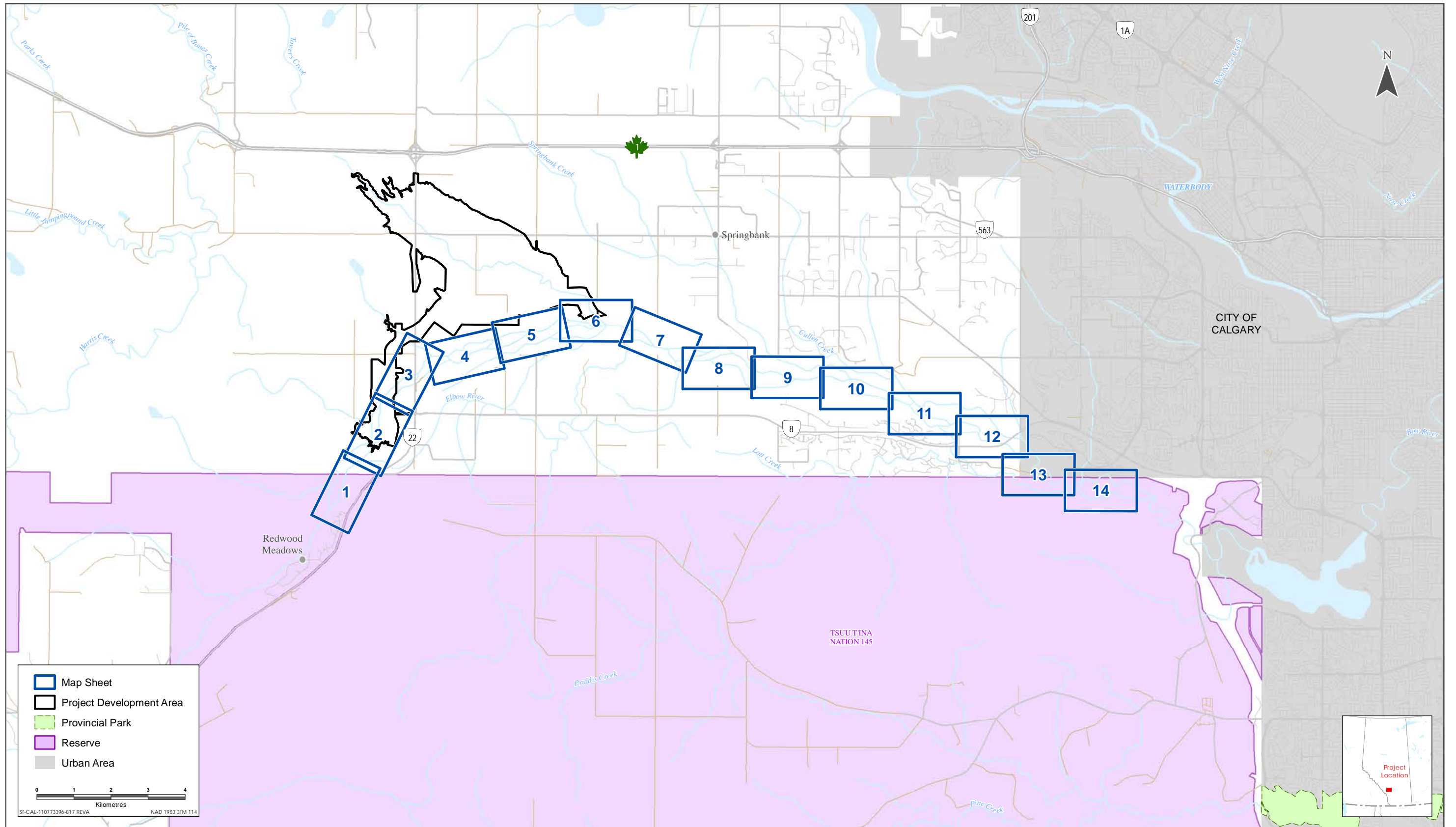
**ALBERTA TRANSPORTATION SPRINGBANK OFF-STREAM RESERVOIR PROJECT
RESPONSE TO CEEA INFORMATION REQUEST PACKAGE 3, AUGUST 31, 2018**

Appendix IR25-1 Desktop Fish Habitat Mapping within the Project Area
May 2019

**APPENDIX IR25-1 DESKTOP FISH HABITAT MAPPING WITHIN
THE PROJECT AREA**

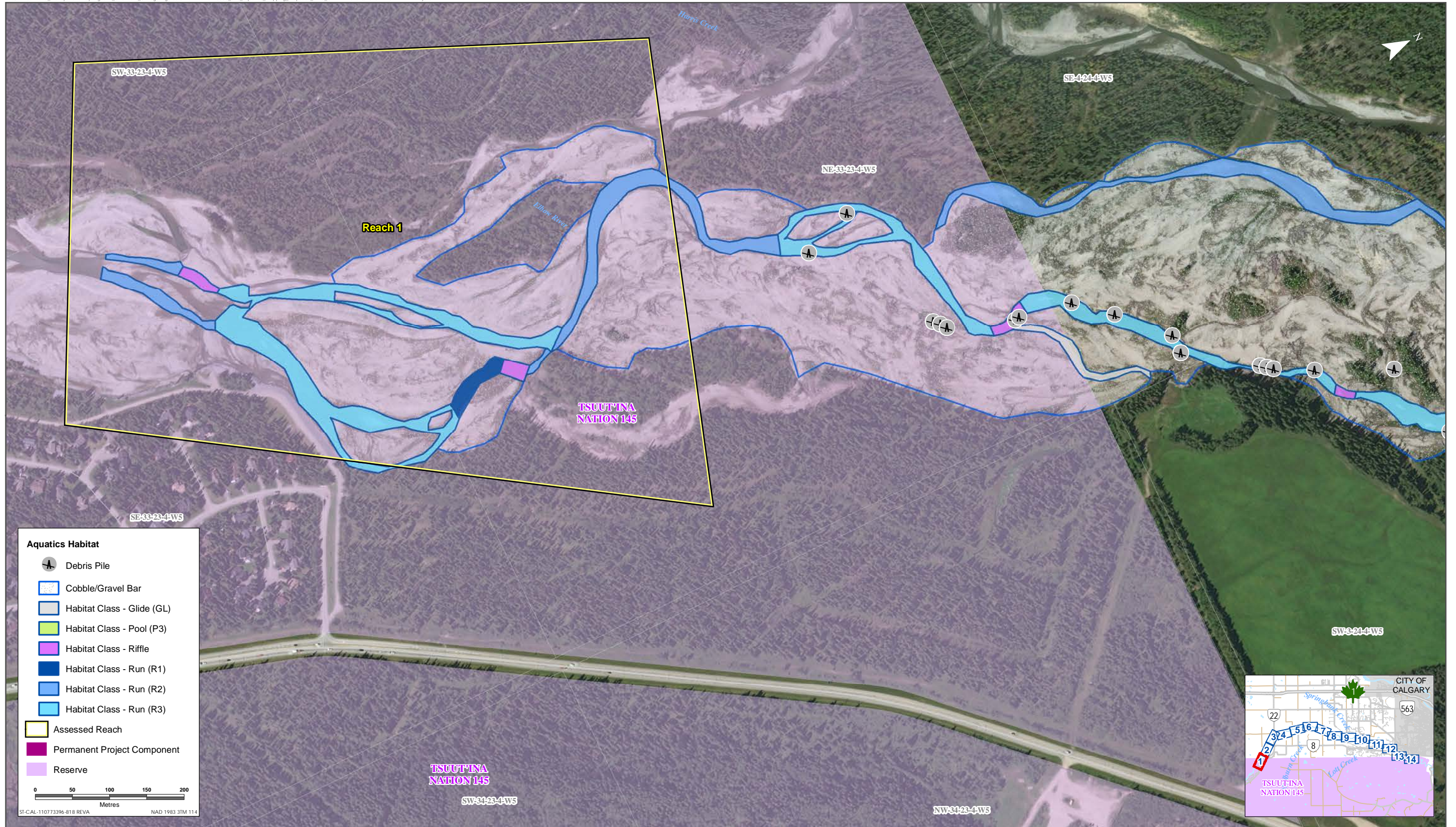
**ALBERTA TRANSPORTATION SPRINGBANK OFF-STREAM RESERVOIR PROJECT
RESPONSE TO CEEA INFORMATION REQUEST PACKAGE 3, AUGUST 31, 2018**

Appendix IR25-1 Desktop Fish Habitat Mapping within the Project Area
May 2019

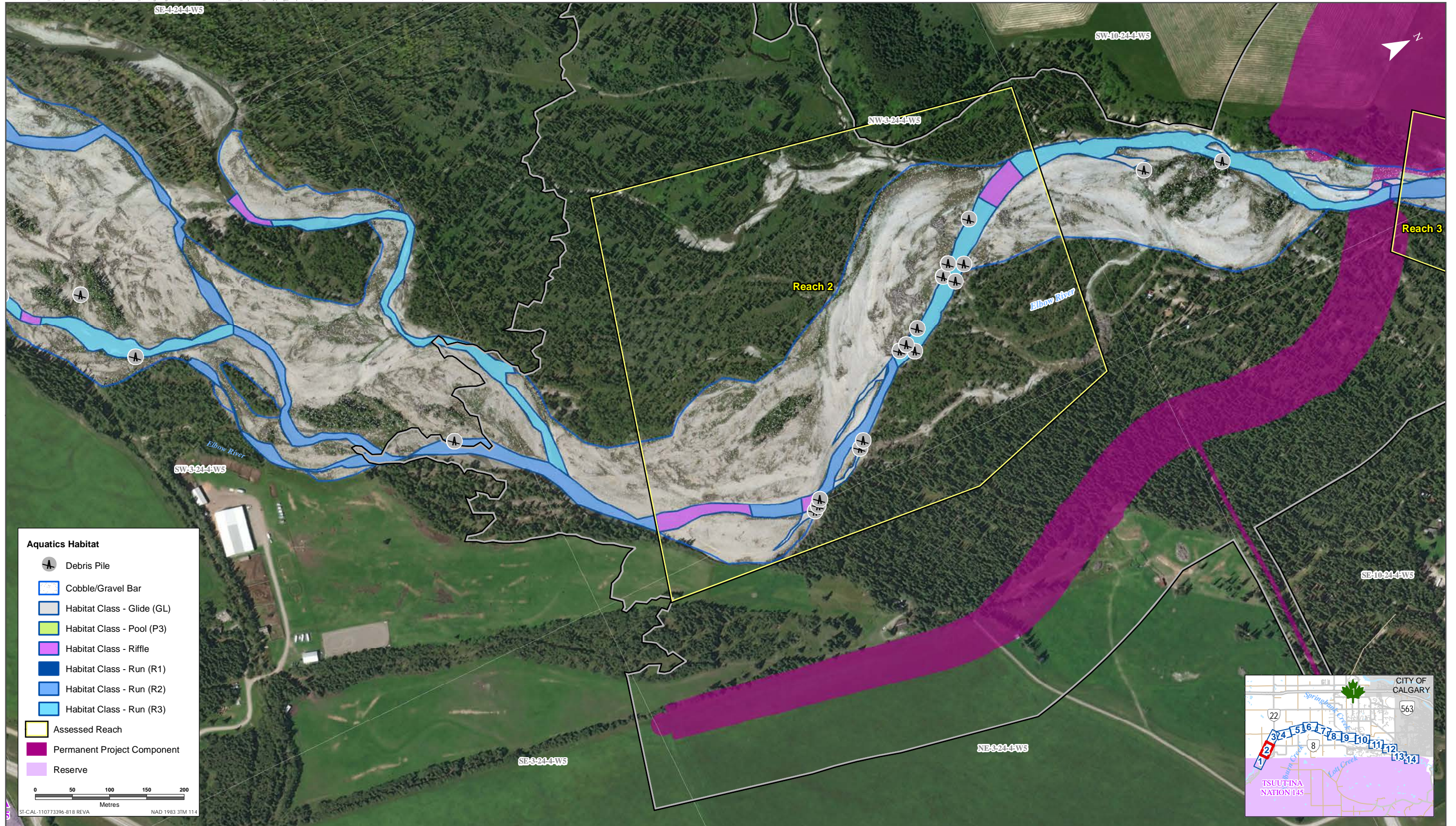


Sources: Base Data - Government of Alberta, Government of Canada. Thematic Data - Stantec Ltd.





Sources: Base Data - Government of Alberta, Government of Canada. Thematic Data - Stantec Ltd.
Imagery: Source: Esri, DigitalGlobe, GeoEye, Earthstar Geographics, CNES/Airbus DS, USDA, USGS, AeroGRID, IGN, and the GIS User Community



Aquatics Habitat

- Debris Pile
- Cobble/Gravel Bar
- Habitat Class - Glide (GL)
- Habitat Class - Pool (P3)
- Habitat Class - Riffle
- Habitat Class - Run (R1)
- Habitat Class - Run (R2)
- Habitat Class - Run (R3)
- Assessed Reach
- Permanent Project Component
- Reserve

0 50 100 150 200
Metres

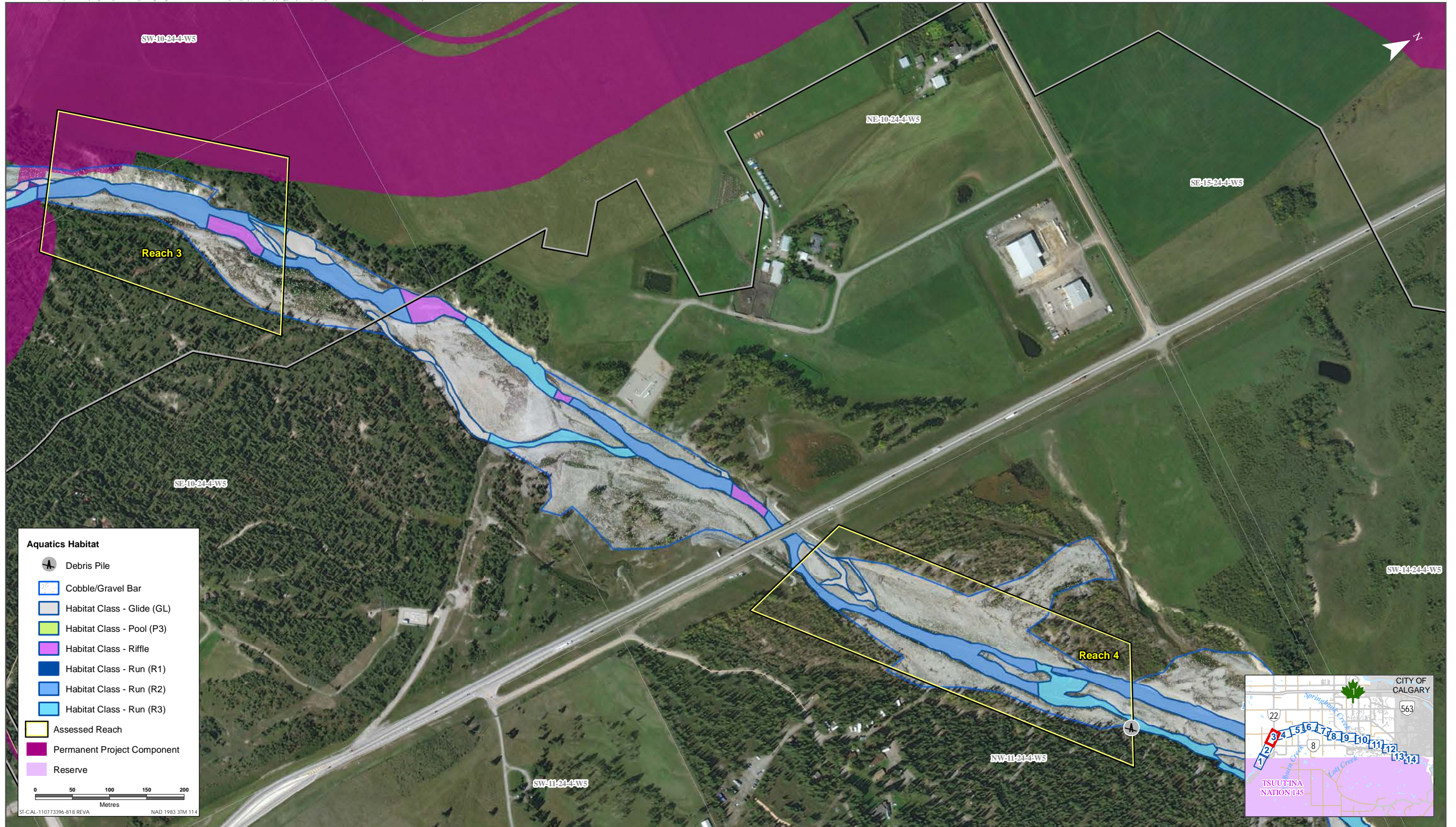
ST-CAL-110773396-818 REVA NAD 1983 31M 114

Sources: Base Data - Government of Alberta, Government of Canada. Thematic Data - Stantec Ltd.
Imagery: Source: Esri, DigitalGlobe, GeoEye, Earthstar Geographics, CNES/Airbus DS, USDA, USGS, AeroGRID, IGN, and the GIS User Community



Habitat Mapping of the Elbow River and Associated Reaches within Proximity to the PDA

Figure IR25-2



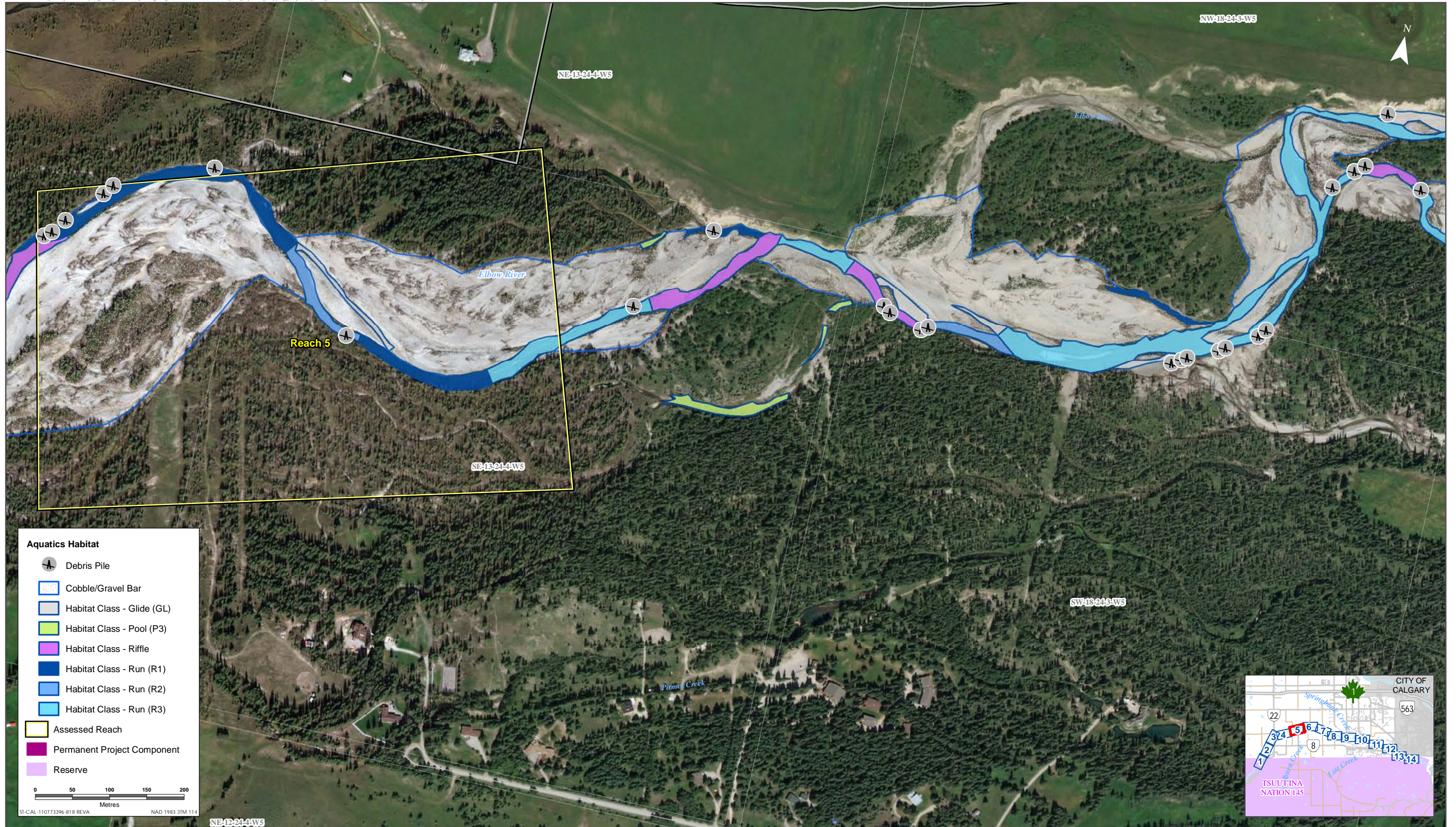
Sources: Base Data - Government of Alberta, Government of Canada. Thematic Data - Stantec Ltd.
Imagery: Source: Esri, DigitalGlobe, GeoEye, Earthstar Geographics, CNES/Airbus DS, USDA, USGS, AeroGRID, IGN, and the GIS User Community



Habitat Mapping of the Elbow River and Associated Reaches within Proximity to the PDA



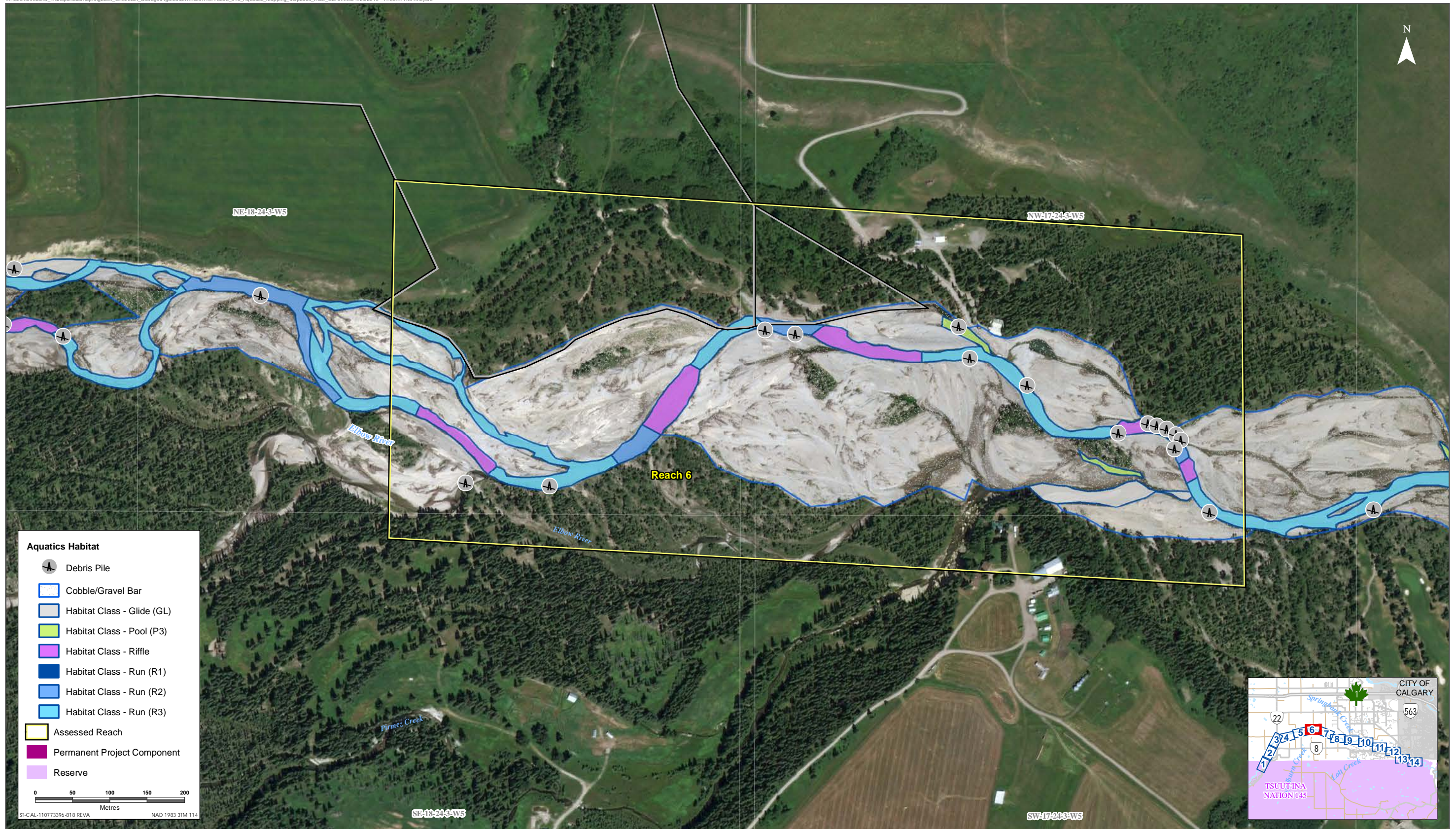
Sources: Base Data - Government of Alberta, Government of Canada. Thematic Data - Stantec Ltd.
 Imagery: Source: Esri, DigitalGlobe, GeoEye, Earthstar Geographics, CNES/Airbus DS, USDA, USGS, AeroGRID, IGN, and the GIS User Community



Sources: Base Data - Government of Alberta, Government of Canada. Thematic Data - Stantec Ltd.
 Imagery: Source: Esri, DigitalGlobe, GeoEye, Earthstar Geographics, CNES/Airbus DS, USDA, USGS, AeroGRID, IGN, and the GIS User Community

Habitat Mapping of the Elbow River and Associated Reaches within Proximity to the PDA

Figure IR25-5

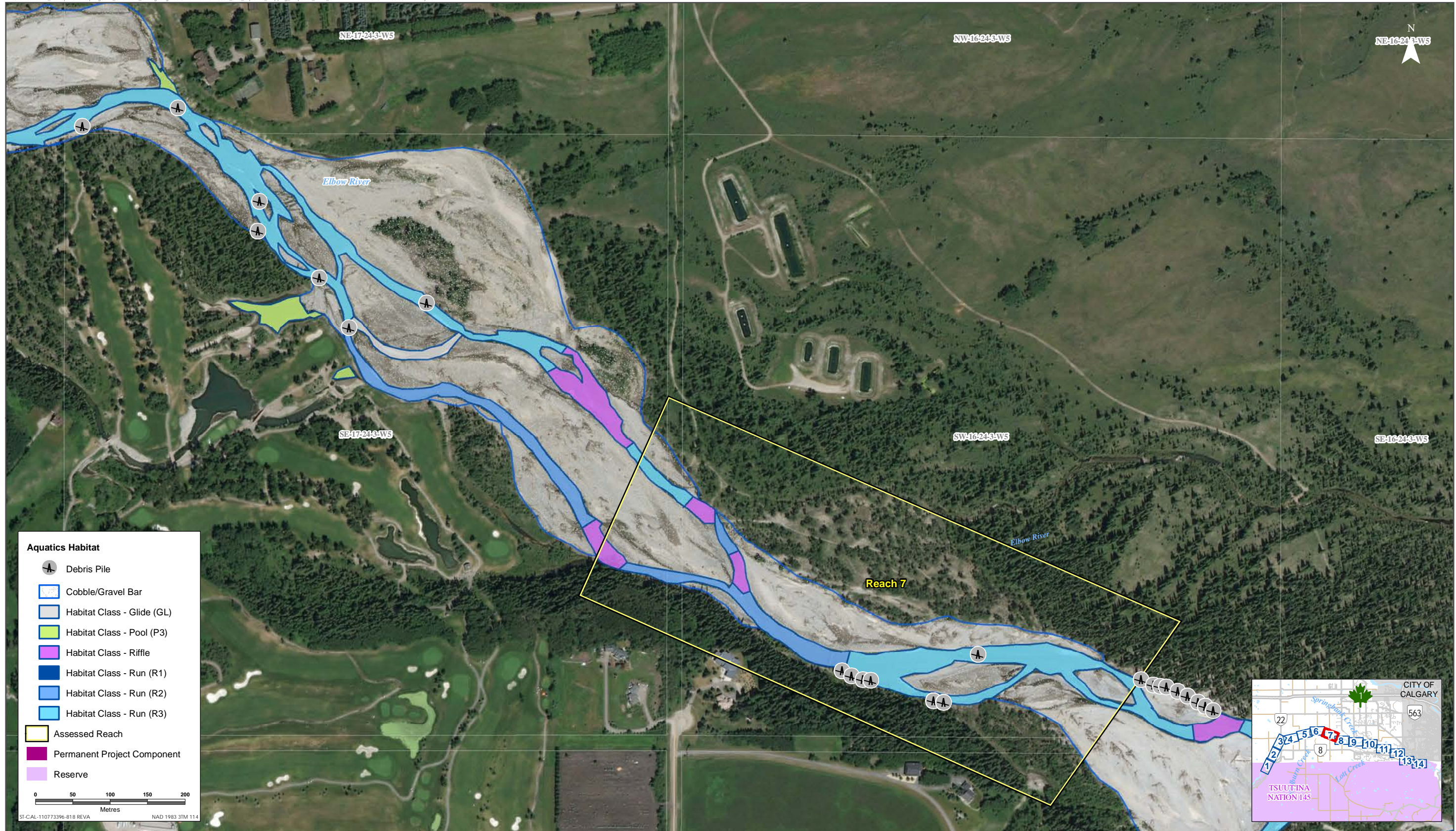


Sources: Base Data - Government of Alberta, Government of Canada. Thematic Data - Stantec Ltd.
 Imagery: Source: Esri, DigitalGlobe, GeoEye, Earthstar Geographics, CNES/Airbus DS, USDA, USGS, AeroGRID, IGN, and the GIS User Community

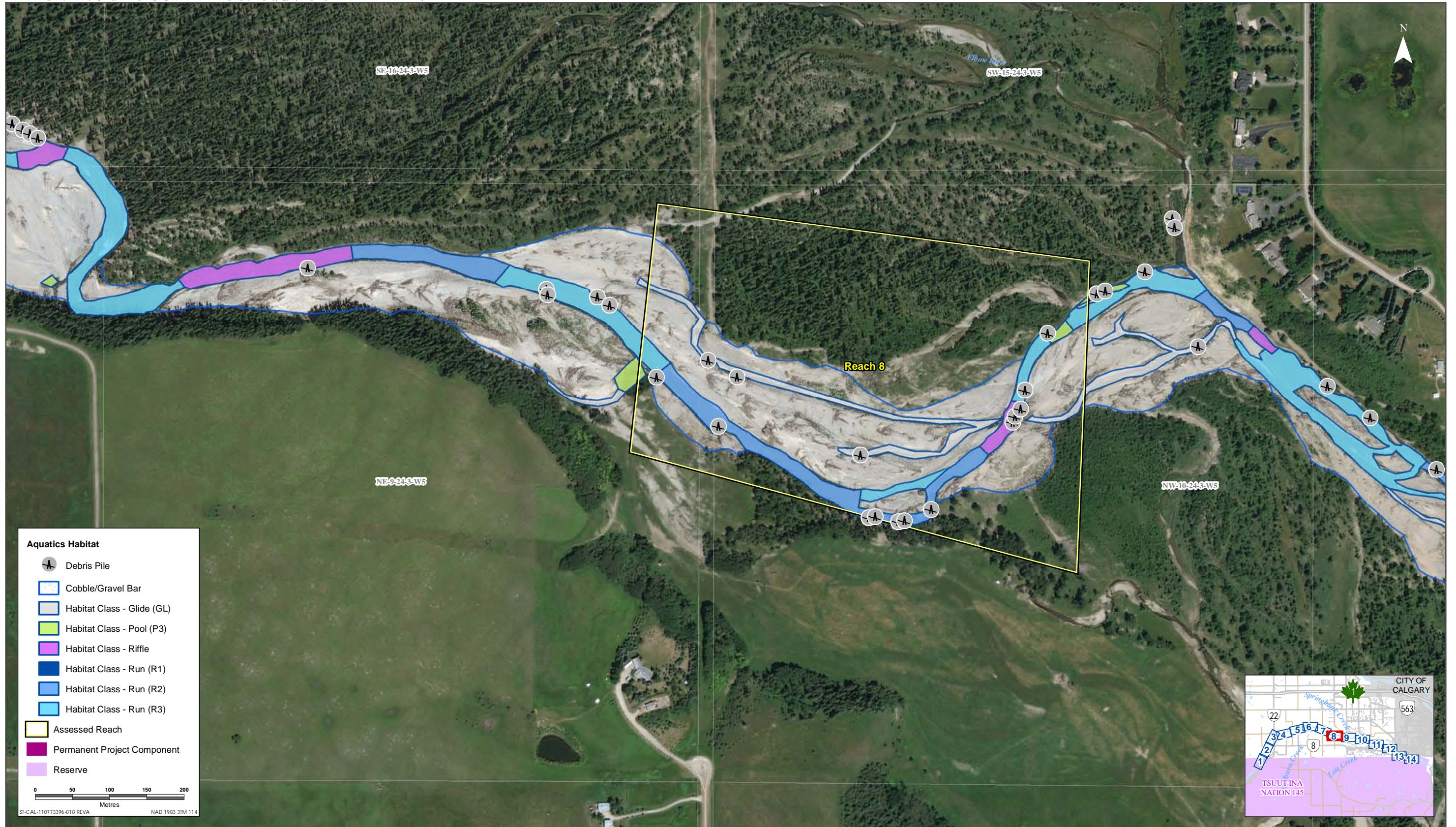


Habitat Mapping of the Elbow River and Associated Reaches within Proximity to the PDA

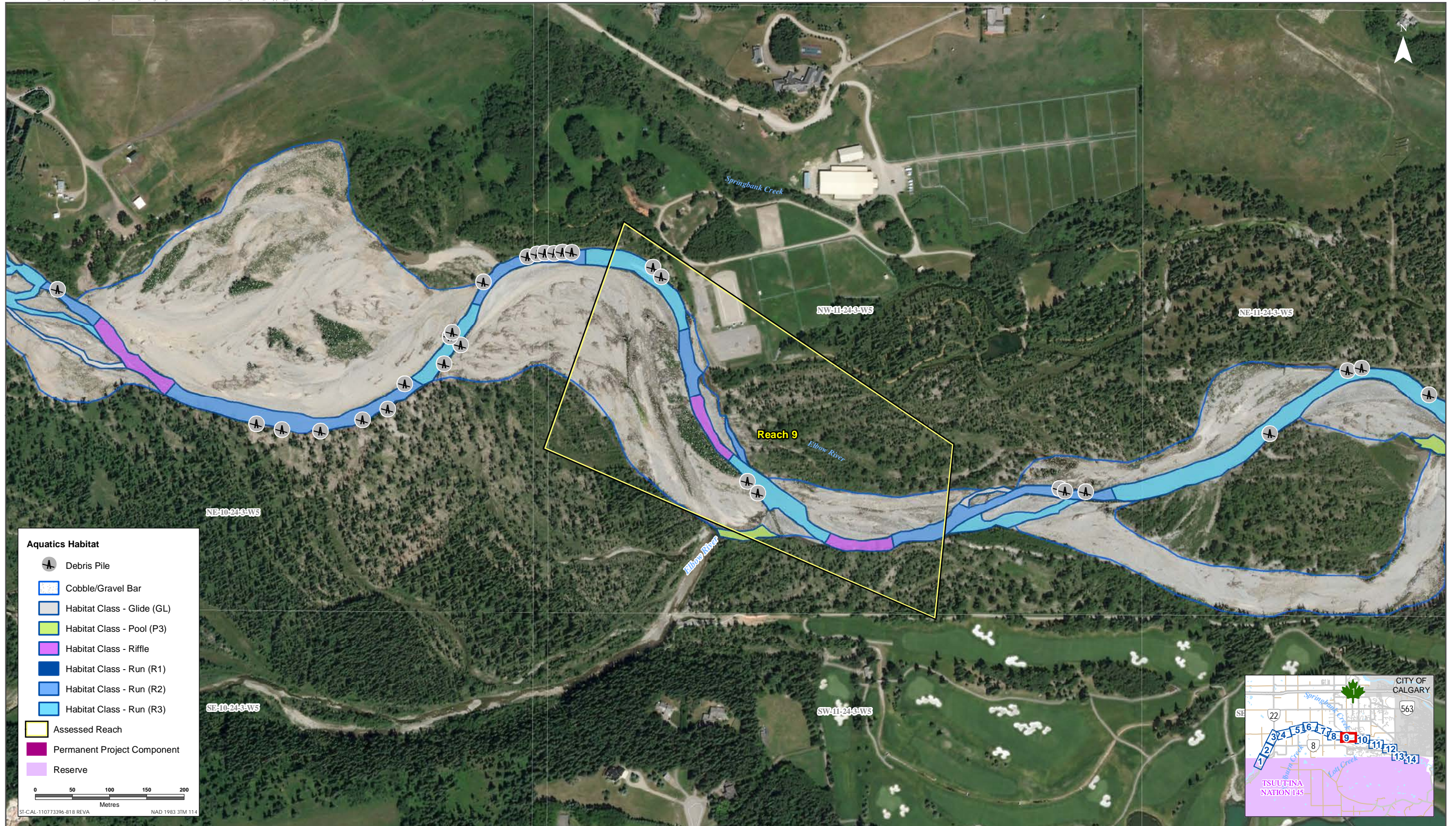
Figure IR25-6



Sources: Base Data - Government of Alberta, Government of Canada. Thematic Data - Stantec Ltd.
Imagery: Source: Esri, DigitalGlobe, GeoEye, Earthstar Geographics, CNES/Airbus DS, USDA, USGS, AeroGRID, IGN, and the GIS User Community



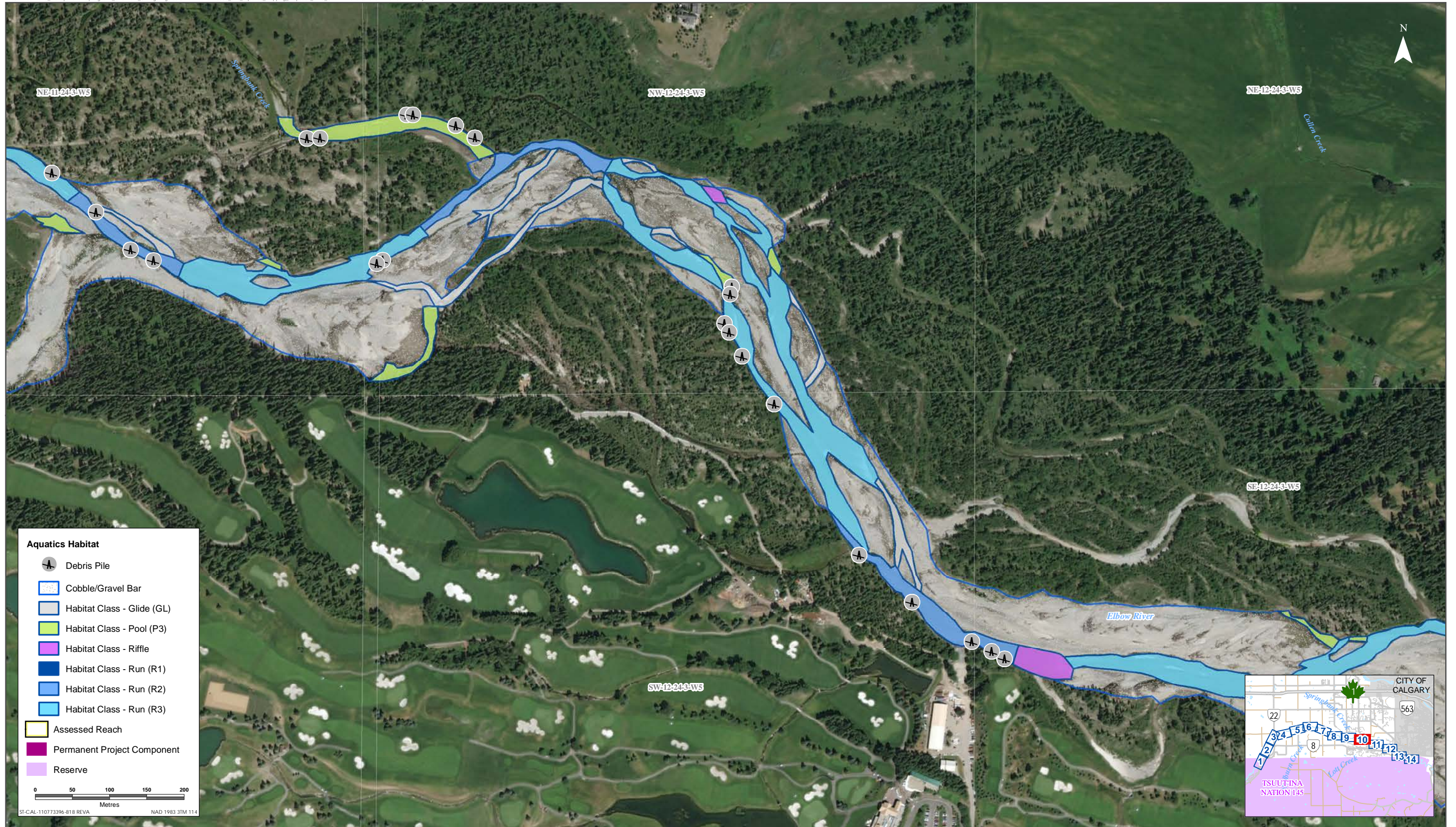
Sources: Base Data - Government of Alberta, Government of Canada. Thematic Data - Stantec Ltd.
Imagery: Source: Esri, DigitalGlobe, GeoEye, Earthstar Geographics, CNES/Airbus DS, USDA, USGS, AeroGRID, IGN, and the GIS User Community



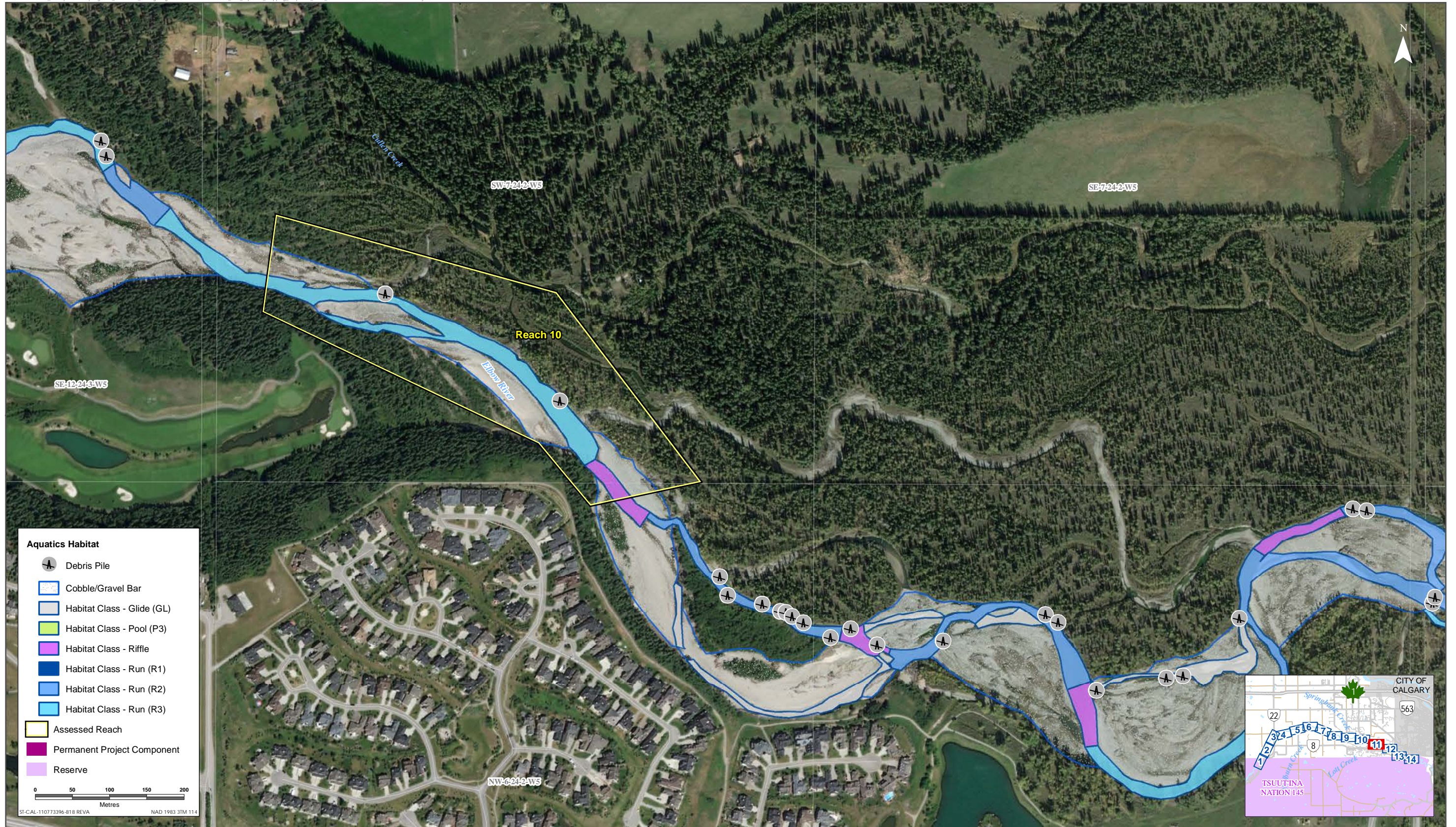
Sources: Base Data - Government of Alberta, Government of Canada. Thematic Data - Stantec Ltd.
Imagery: Source: Esri, DigitalGlobe, GeoEye, Earthstar Geographics, CNES/Airbus DS, USDA, USGS, AeroGRID, IGN, and the GIS User Community



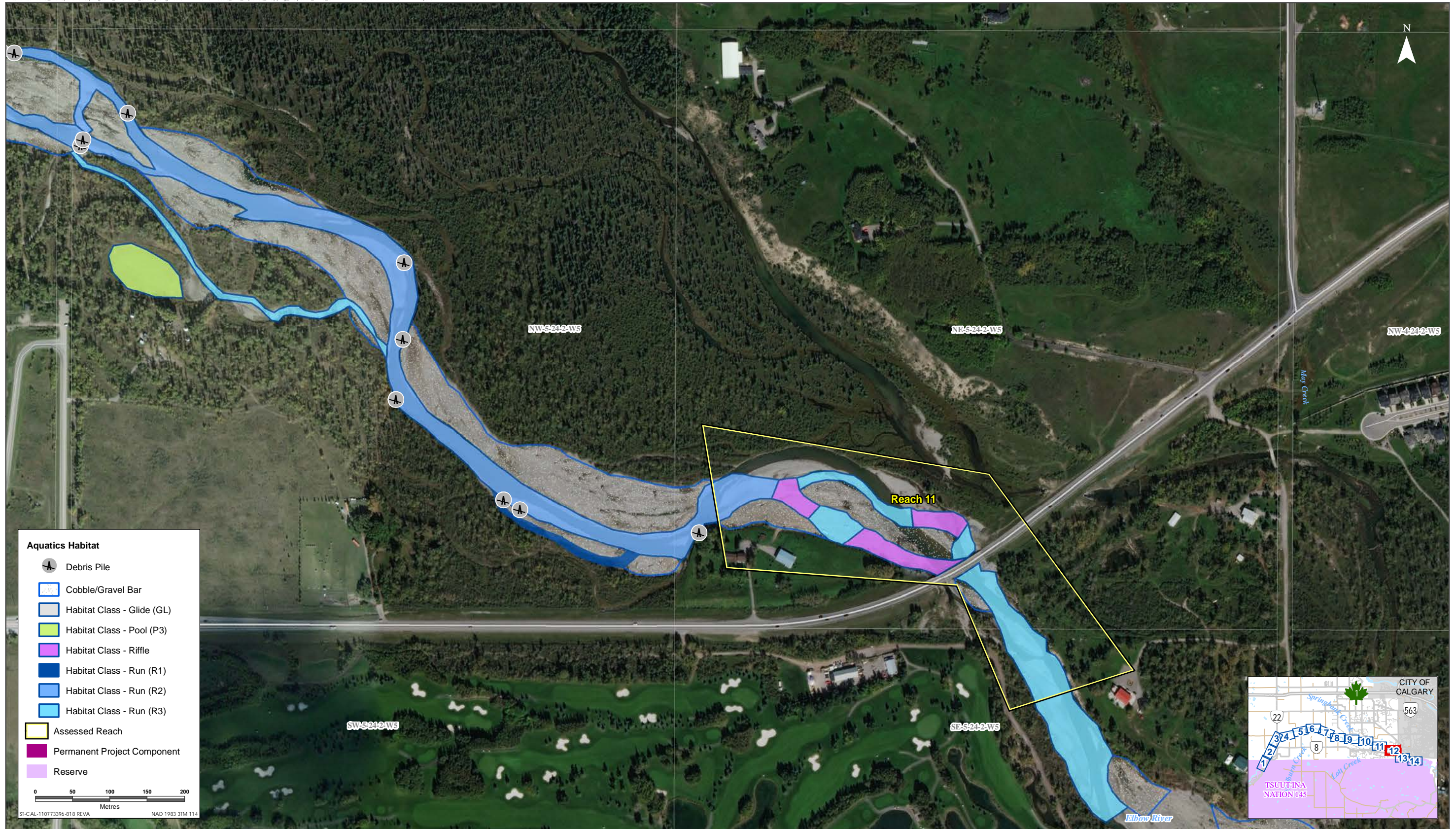
Habitat Mapping of the Elbow River and Associated Reaches within Proximity to the PDA



Sources: Base Data - Government of Alberta, Government of Canada. Thematic Data - Stantec Ltd.
Imagery: Source: Esri, DigitalGlobe, GeoEye, Earthstar Geographics, CNES/Airbus DS, USDA, USGS, AeroGRID, IGN, and the GIS User Community



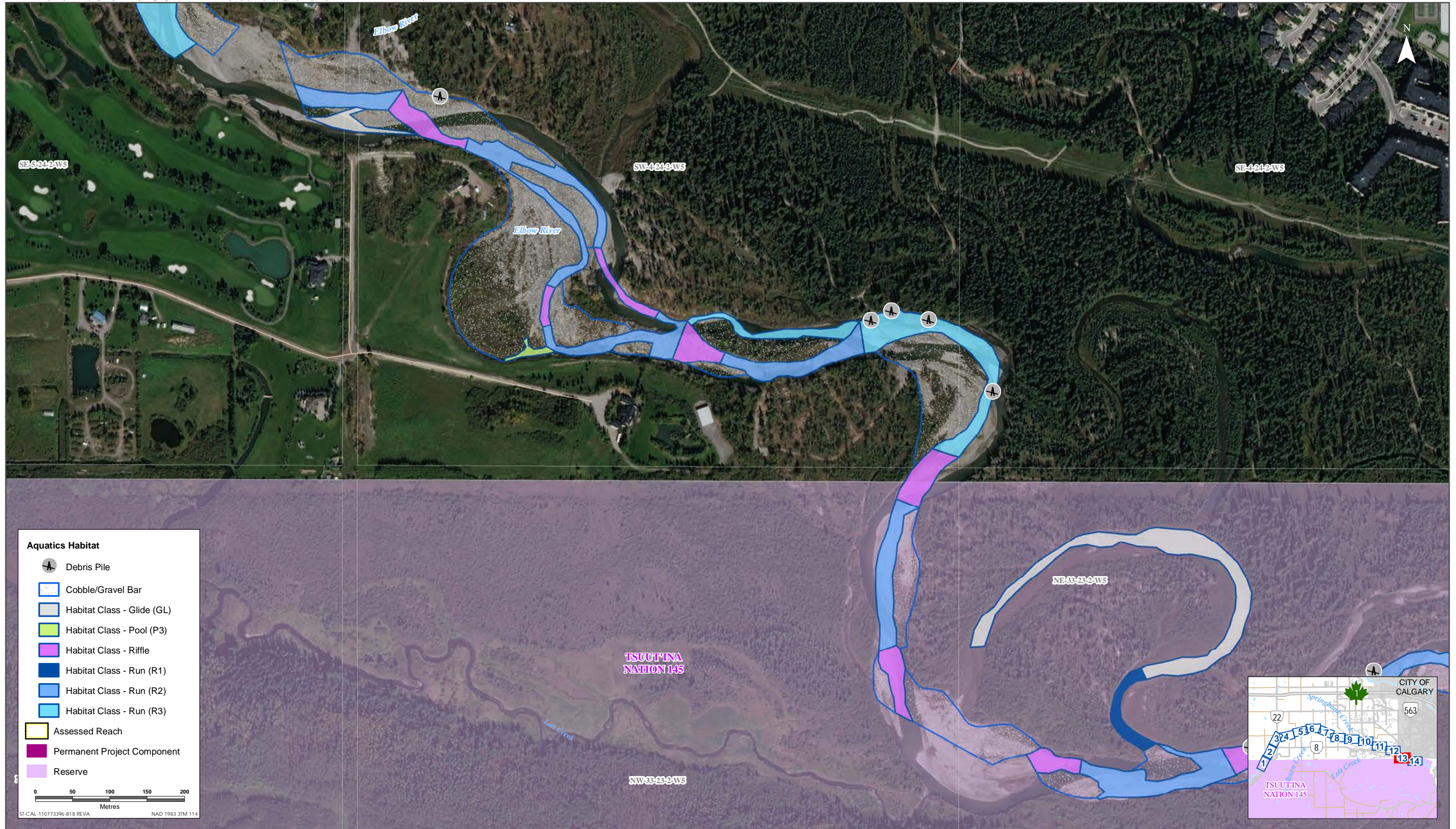
Sources: Base Data - Government of Alberta, Government of Canada. Thematic Data - Stantec Ltd.
 Imagery: Source: Esri, DigitalGlobe, GeoEye, Earthstar Geographics, CNES/Airbus DS, USDA, USGS, AeroGRID, IGN, and the GIS User Community



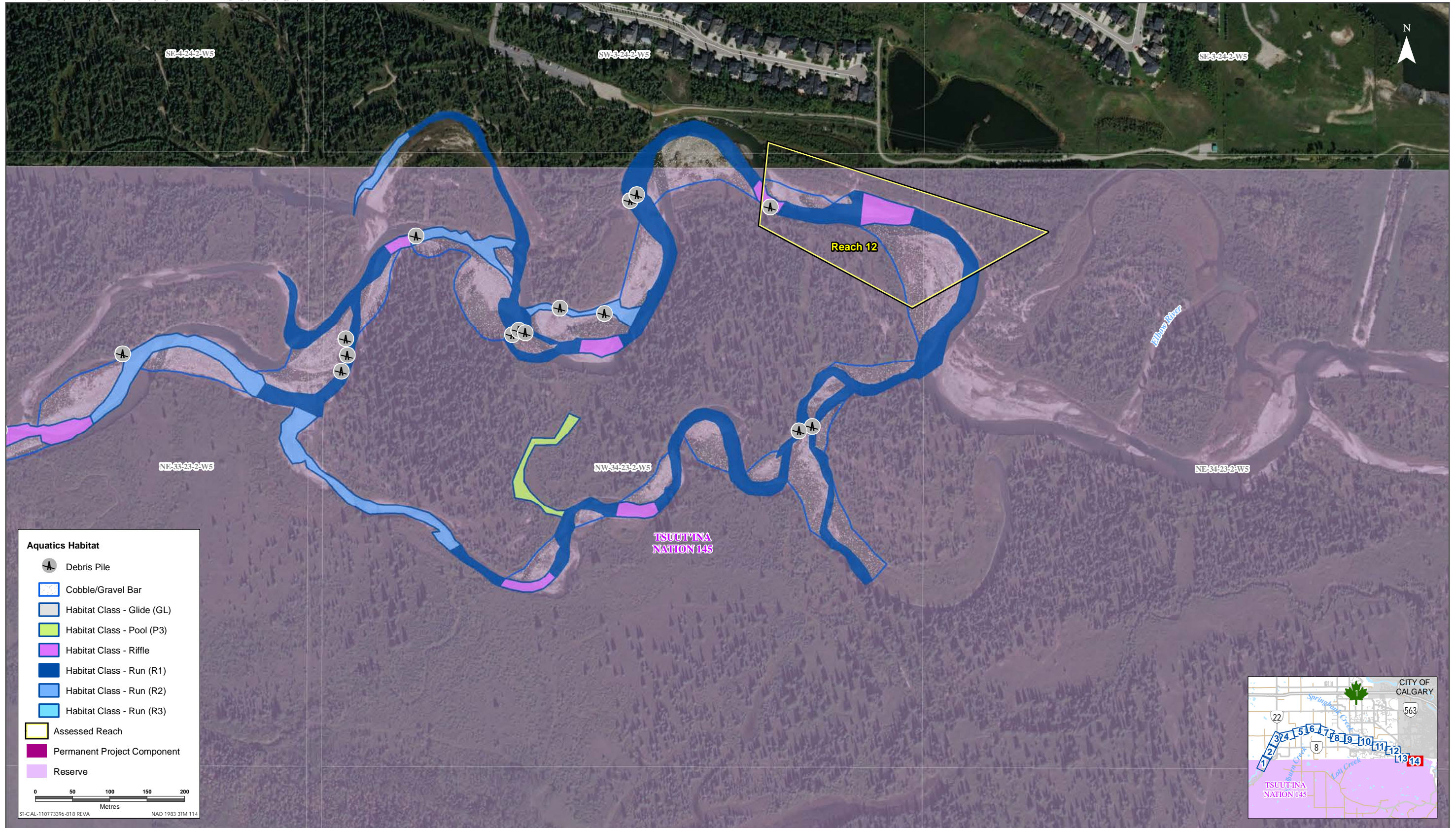
Sources: Base Data - Government of Alberta, Government of Canada. Thematic Data - Stantec Ltd.
 Imagery: Source: Esri, DigitalGlobe, GeoEye, Earthstar Geographics, CNES/Airbus DS, USDA, USGS, AeroGRID, IGN, and the GIS User Community



Habitat Mapping of the Elbow River and Associated Reaches within Proximity to the PDA



Sources: Base Data - Government of Alberta, Government of Canada. Thematic Data - Stantec Ltd.
Imagery: Source: Esri, DigitalGlobe, GeoEye, Earthstar Geographics, CNES/Airbus DS, USDA, USGS, AeroGRID, IGN, and the GIS User Community



Sources: Base Data - Government of Alberta, Government of Canada. Thematic Data - Stantec Ltd.
 Imagery: Source: Esri, DigitalGlobe, GeoEye, Earthstar Geographics, CNES/Airbus DS, USDA, USGS, AeroGRID, IGN, and the GIS User Community

