

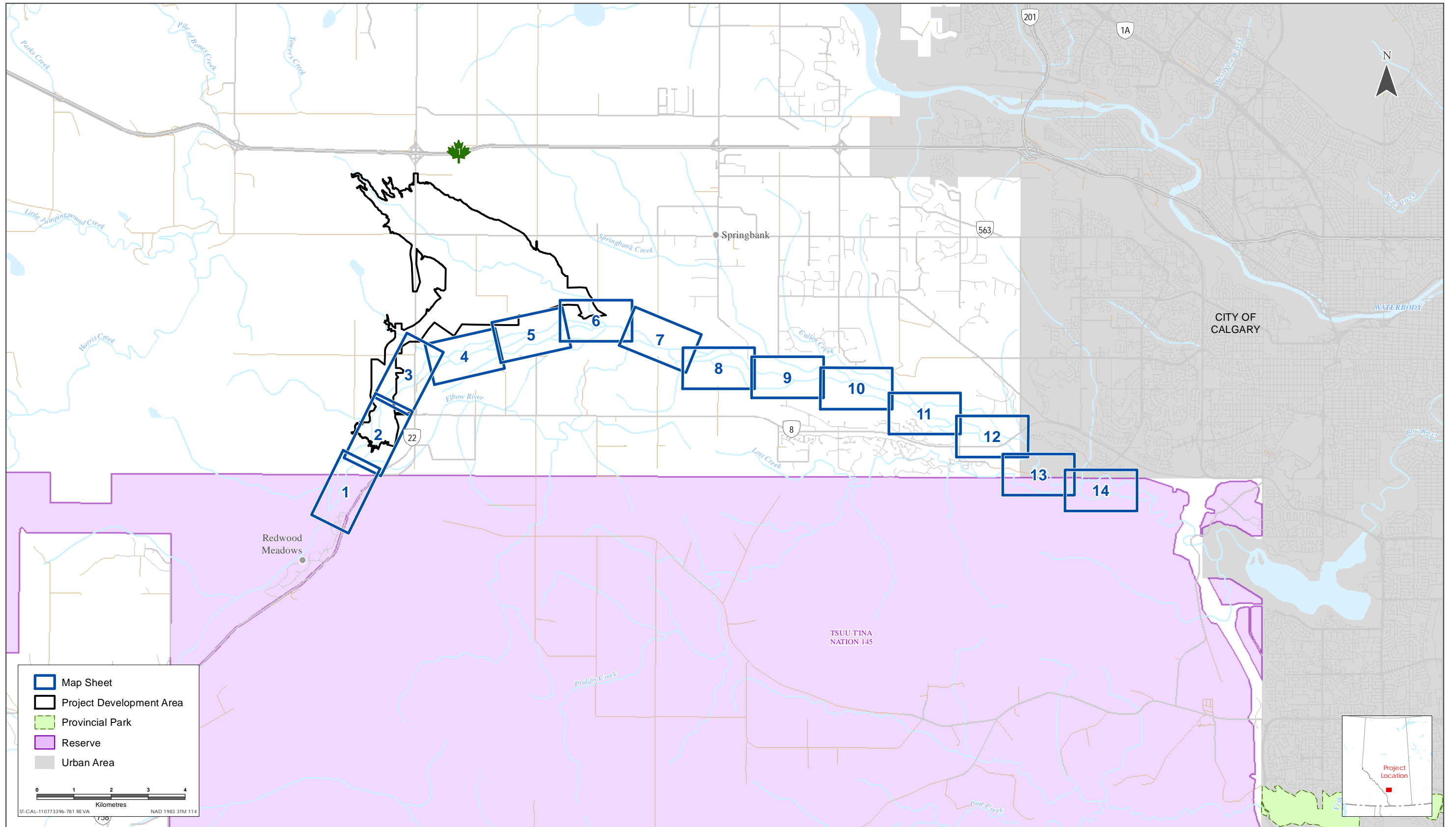
**ALBERTA TRANSPORTATION SPRINGBANK OFF-STREAM RESERVOIR PROJECT  
RESPONSE TO NRCB AND AEP SUPPLEMENTAL INFORMATION REQUEST 1, JULY 28, 2018**

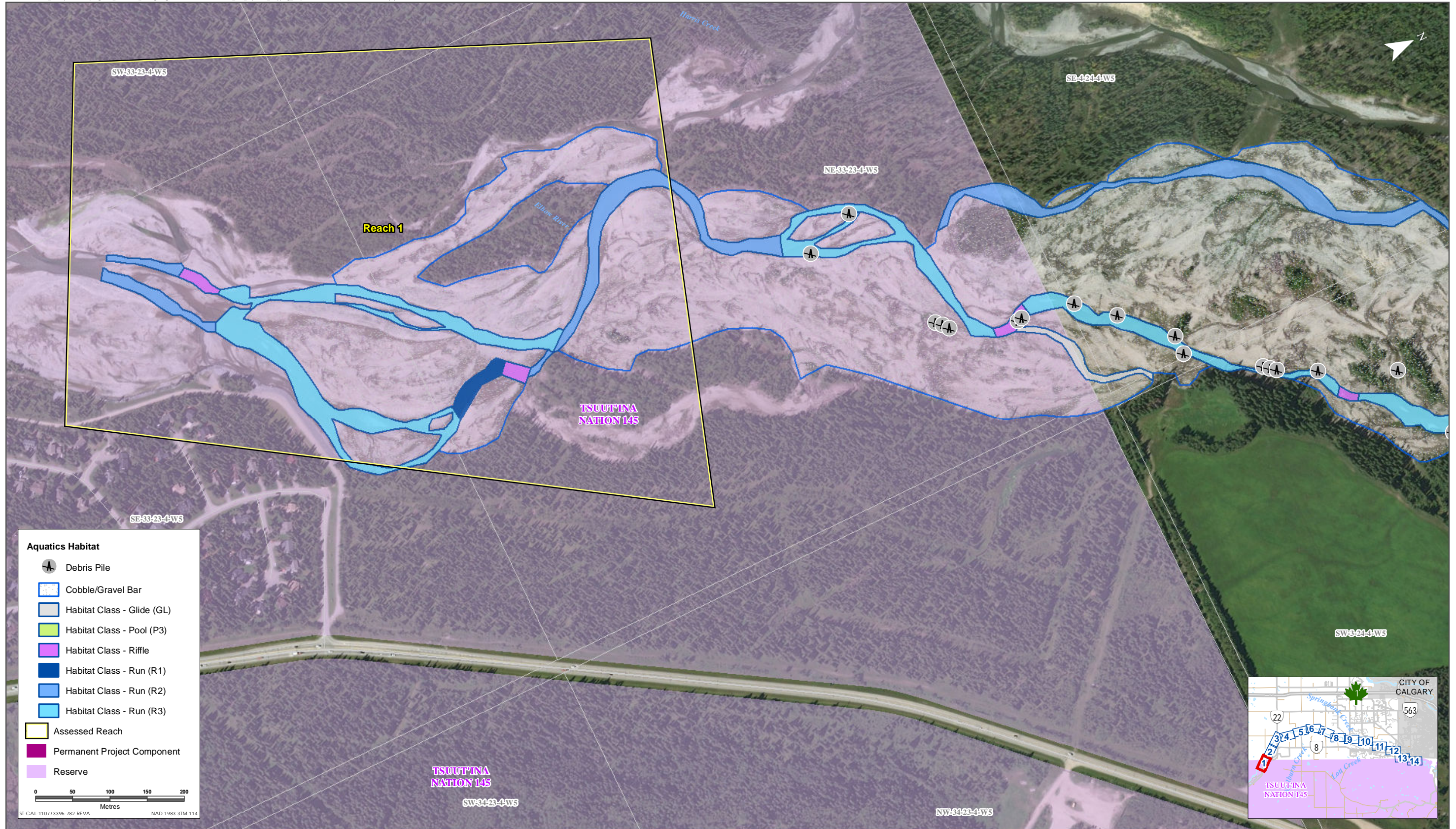
Appendix IR361-1 Habitat Mapping of the Elbow River and Associated Reaches Within Proximity to the PDA  
May 2019

**APPENDIX IR361-1 HABITAT MAPPING OF THE ELBOW RIVER  
AND ASSOCIATED REACHES WITHIN  
PROXIMITY TO THE PDA**

**ALBERTA TRANSPORTATION SPRINGBANK OFF-STREAM RESERVOIR PROJECT  
RESPONSE TO NRCB AND AEP SUPPLEMENTAL INFORMATION REQUEST 1, JULY 28, 2018**

Appendix IR361-1 Habitat Mapping of the Elbow River and Associated Reaches Within Proximity to the  
PDA  
May 2019



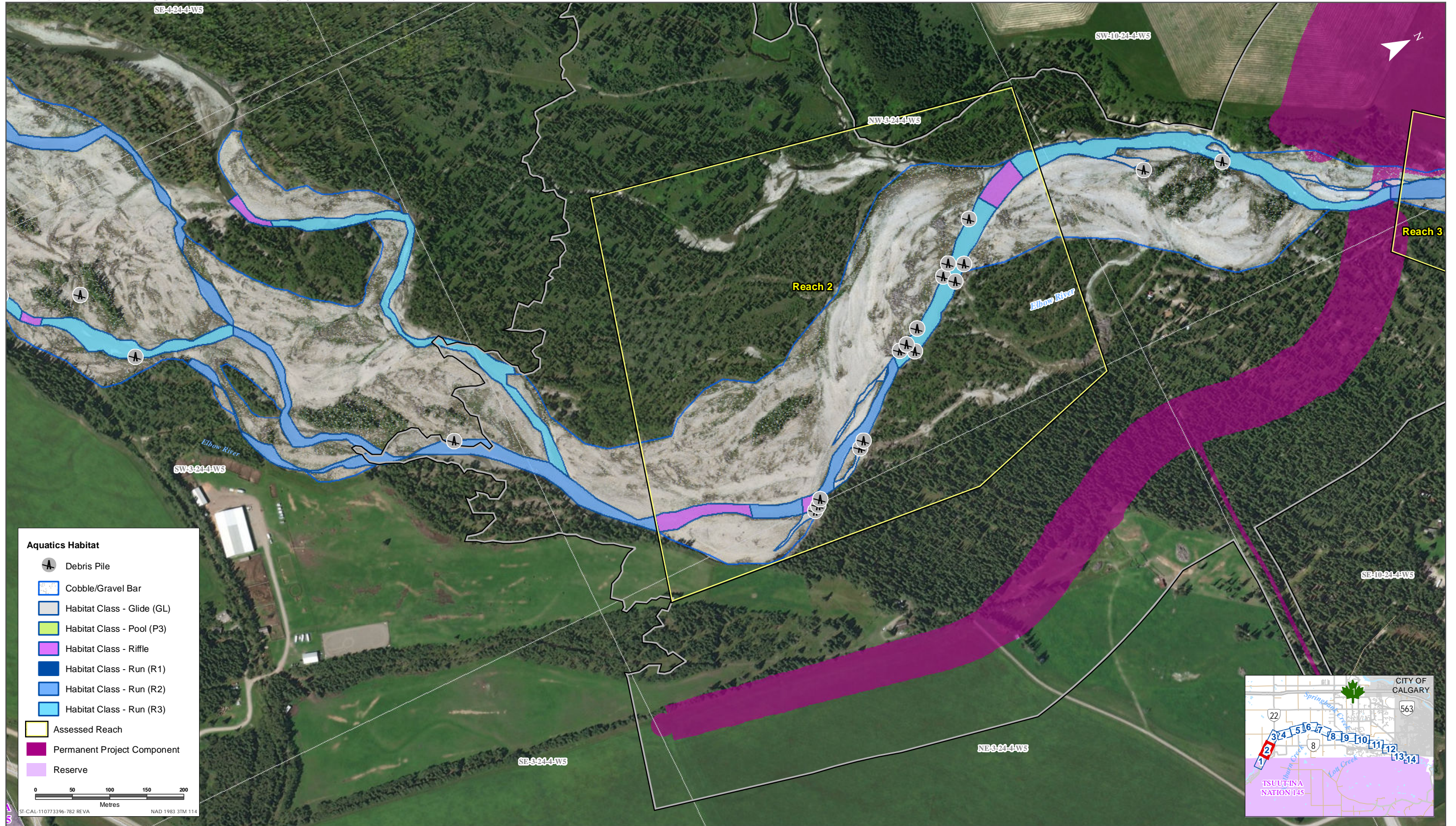


Sources: Base Data - Government of Alberta, Government of Canada. Thematic Data - Stantec Ltd.  
Imagery: Source: Esri, DigitalGlobe, GeoEye, Earthstar Geographics, CNES/Airbus DS, USDA, USGS, AeroGRID, IGN, and the GIS User Community



Habitat Mapping of the Elbow River and Associated Reaches within Proximity to the PDA

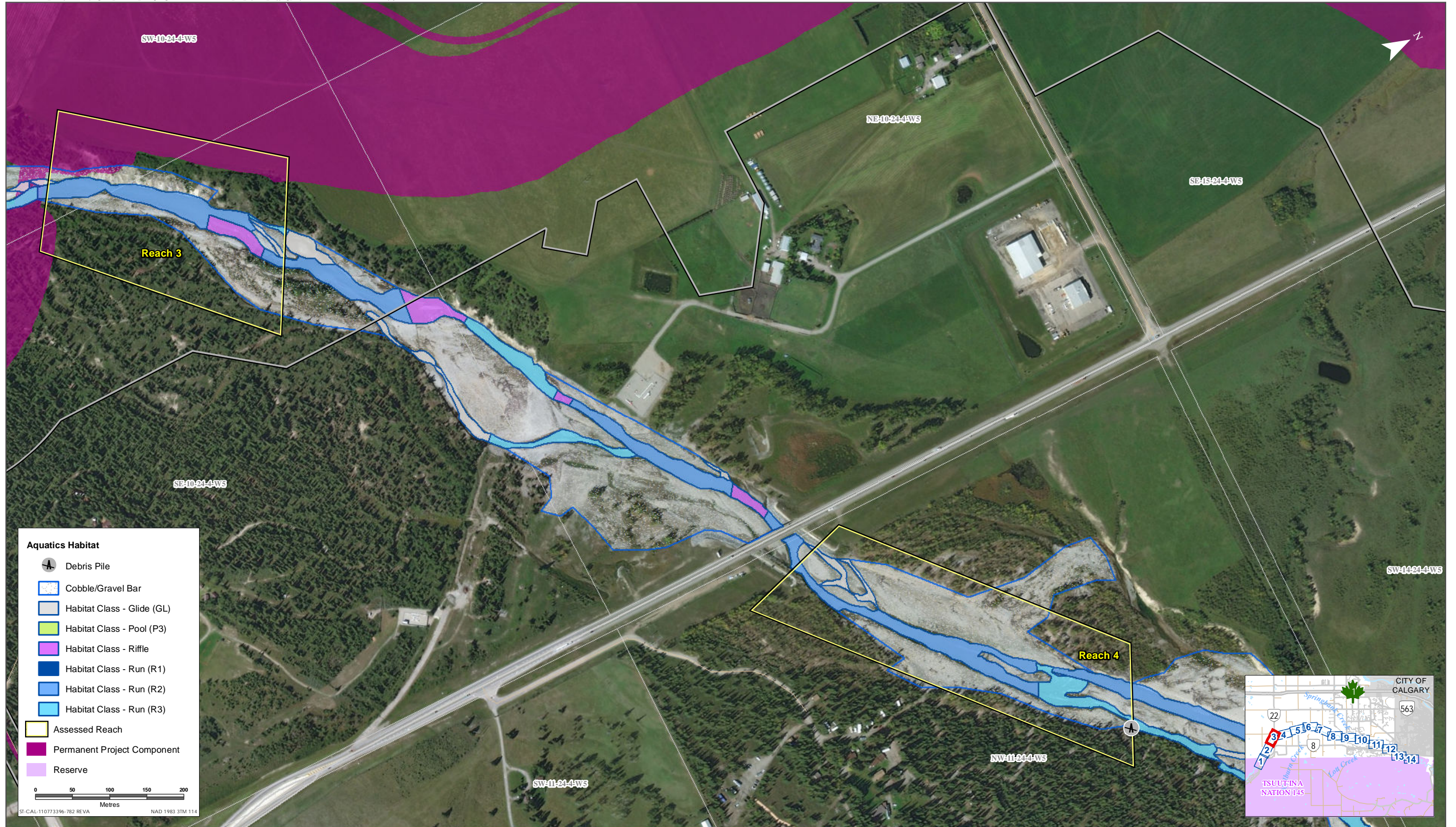
Figure IR361-1



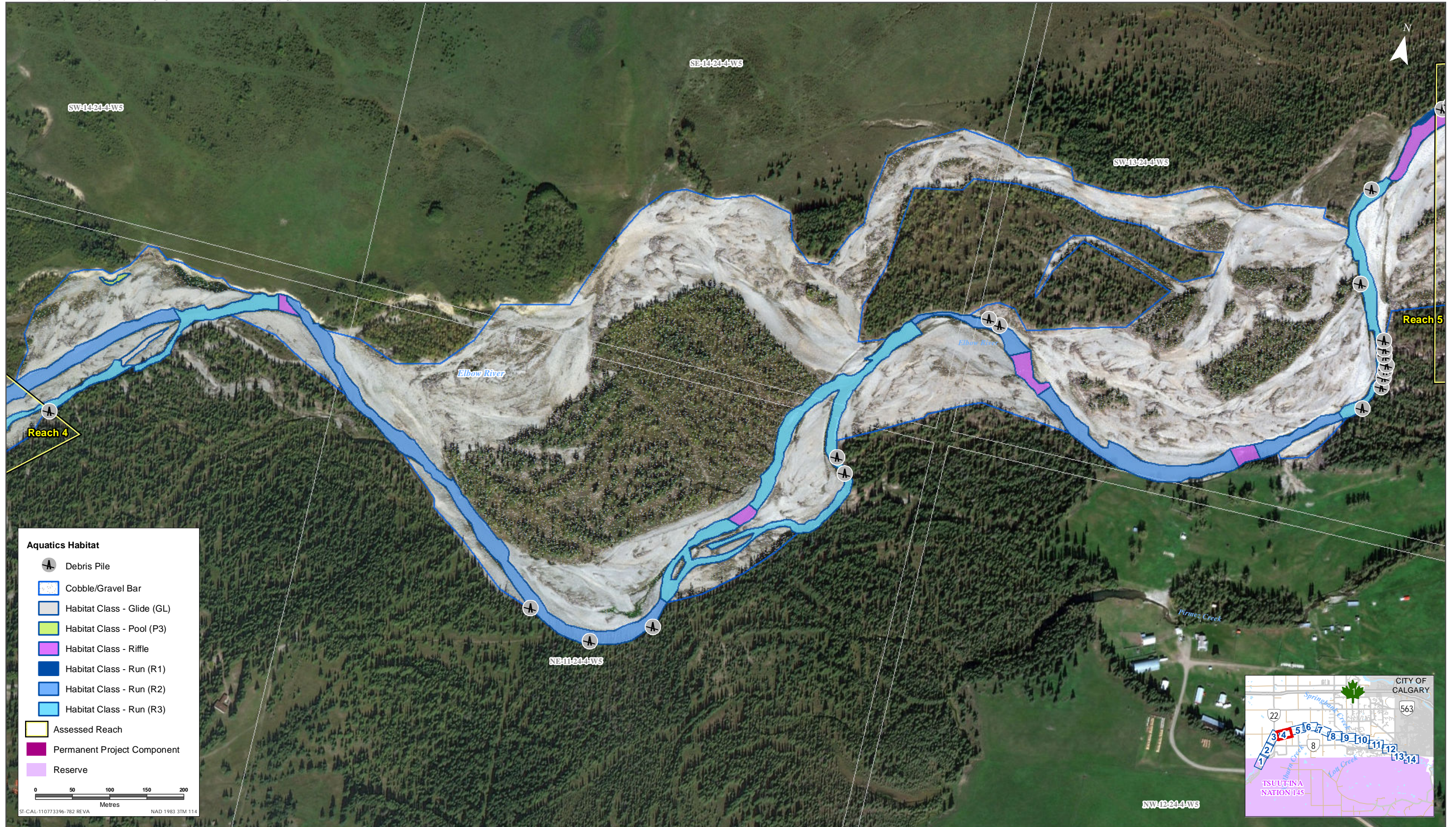
Sources: Base Data - Government of Alberta, Government of Canada. Thematic Data - Stantec Ltd.  
 Imagery: Source: Esri, DigitalGlobe, GeoEye, Earthstar Geographics, CNES/Airbus DS, USDA, USGS, AeroGRID, IGN, and the GIS User Community

Habitat Mapping of the Elbow River and Associated Reaches within Proximity to the PDA

Figure IR361-2



Sources: Base Data - Government of Alberta, Government of Canada. Thematic Data - Stantec Ltd.  
Imagery: Source: Esri, DigitalGlobe, GeoEye, Earthstar Geographics, CNES/Airbus DS, USDA, USGS, AeroGRID, IGN, and the GIS User Community

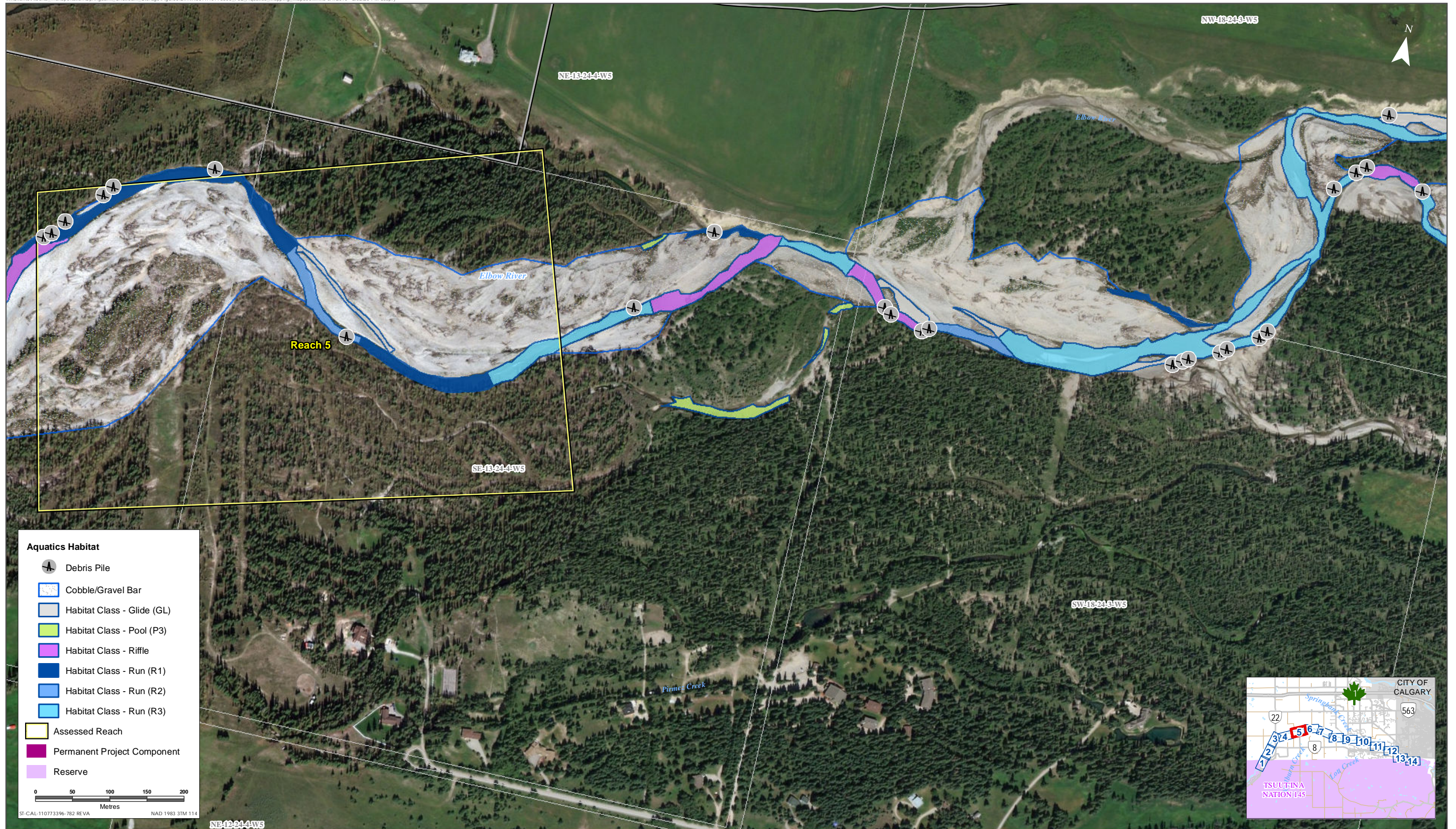


Sources: Base Data - Government of Alberta, Government of Canada. Thematic Data - Stantec Ltd.  
 Imagery: Source: Esri, DigitalGlobe, GeoEye, Earthstar Geographics, CNES/Airbus DS, USDA, USGS, AeroGRID, IGN, and the GIS User Community



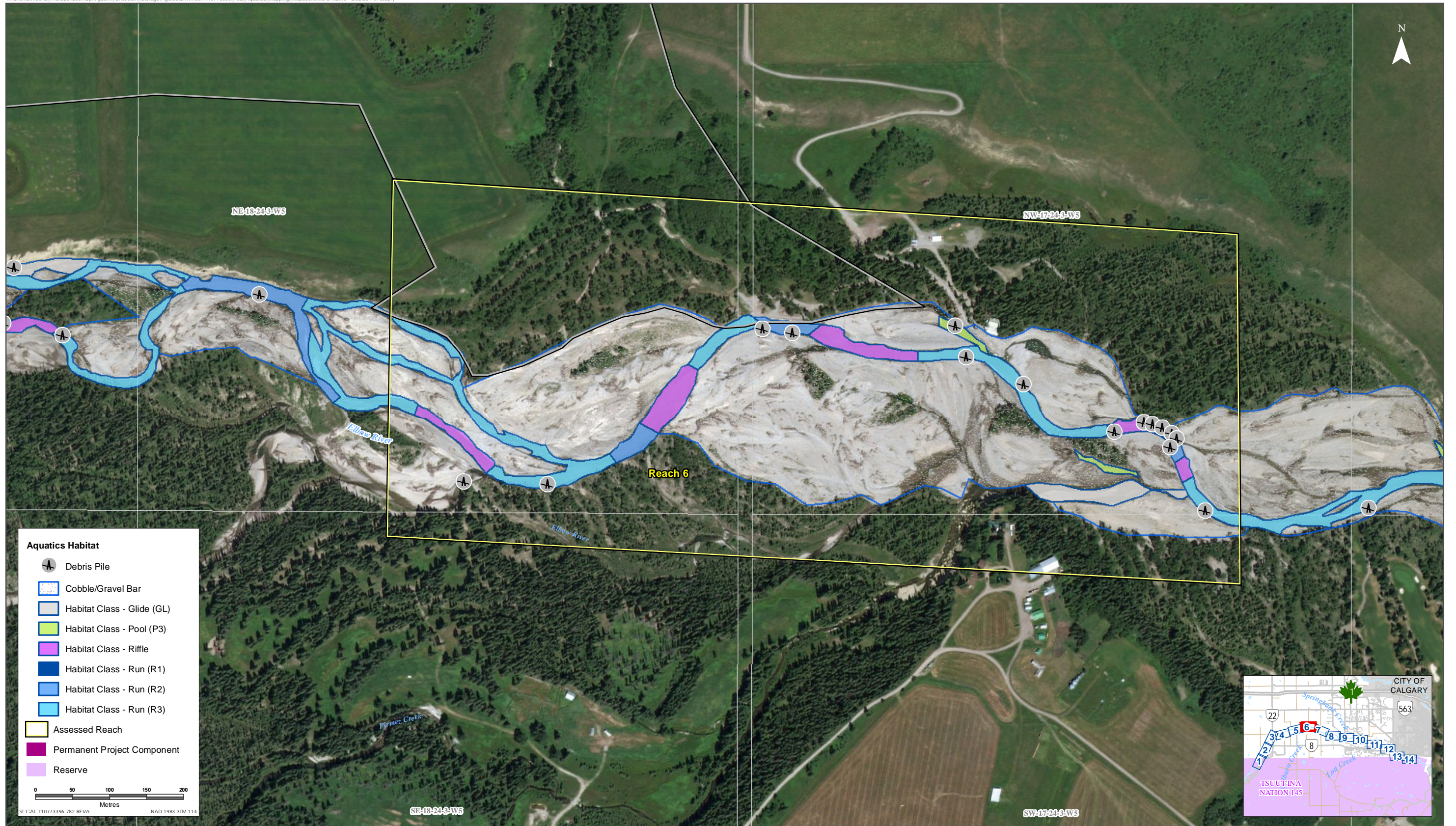
Habitat Mapping of the Elbow River and Associated Reaches within Proximity to the PDA

Figure IR361-4

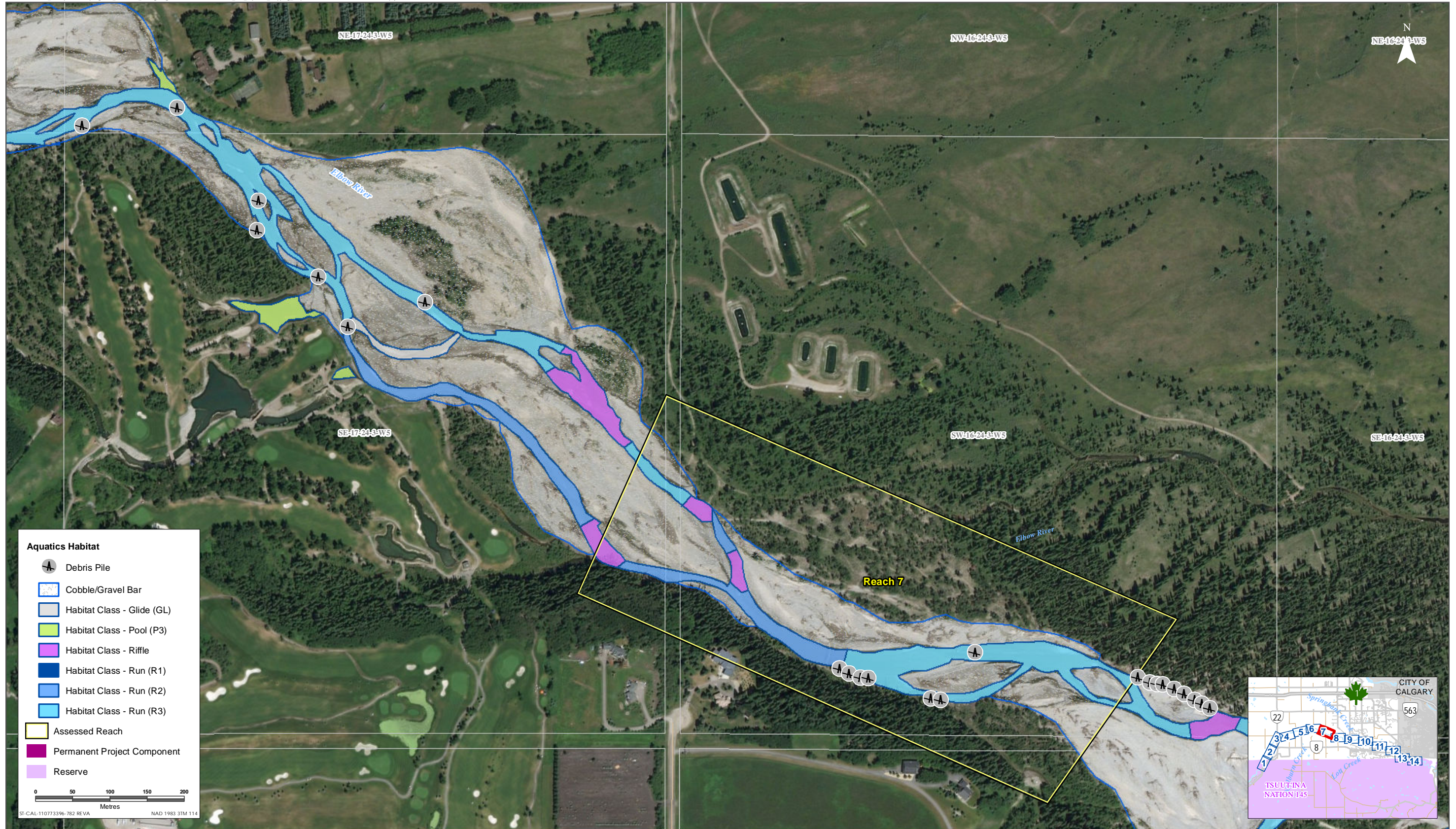


Sources: Base Data - Government of Alberta, Government of Canada. Thematic Data - Stantec Ltd.  
Imagery: Source: Esri, DigitalGlobe, GeoEye, Earthstar Geographics, CNES/Airbus DS, USDA, USGS, AeroGRID, IGN, and the GIS User Community

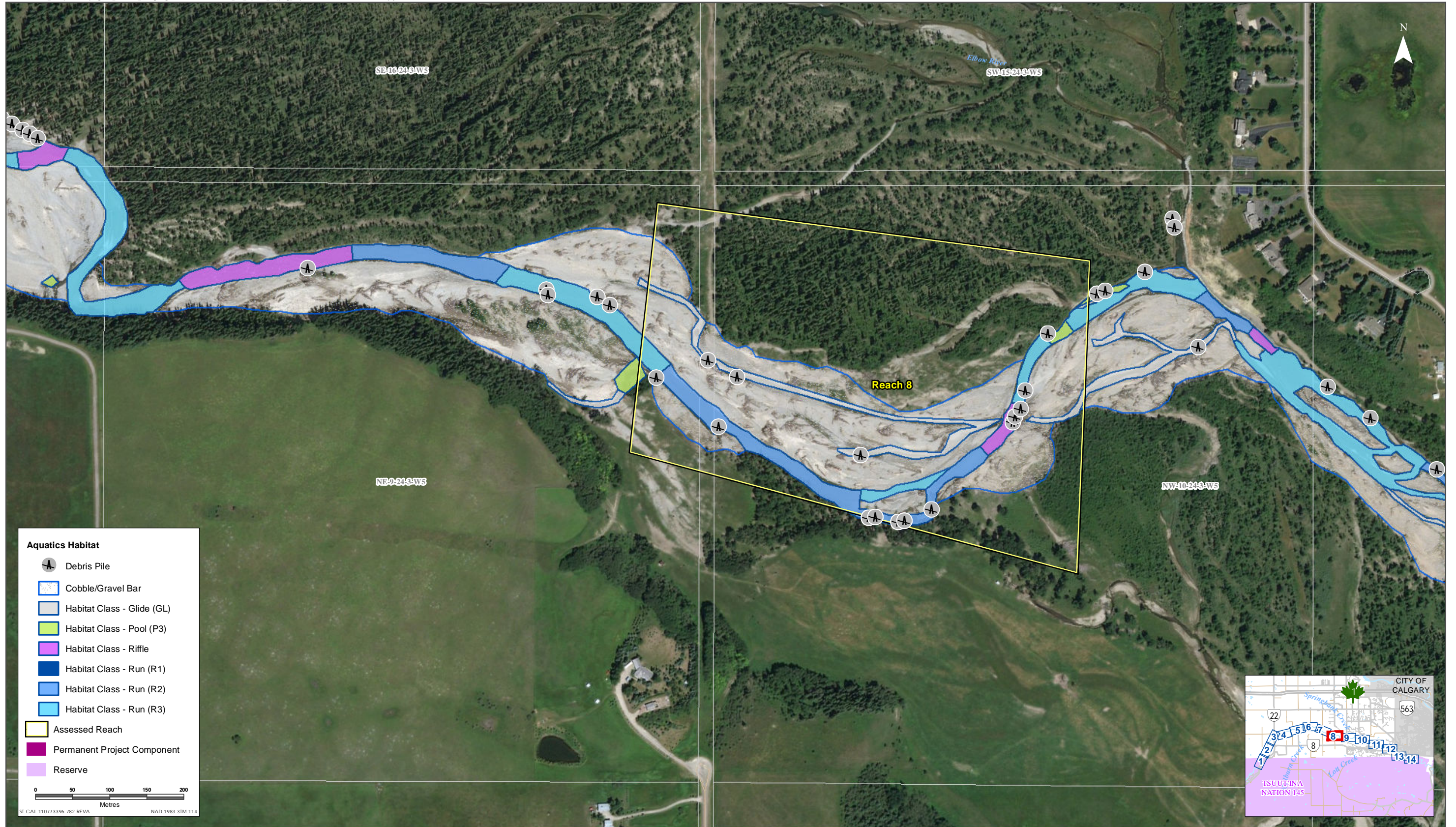




Sources: Base Data - Government of Alberta, Government of Canada. Thematic Data - Stantec Ltd.  
 Imagery: Source: Esri, DigitalGlobe, GeoEye, Earthstar Geographics, CNES/Airbus DS, USDA, USGS, AeroGRID, IGN, and the GIS User Community



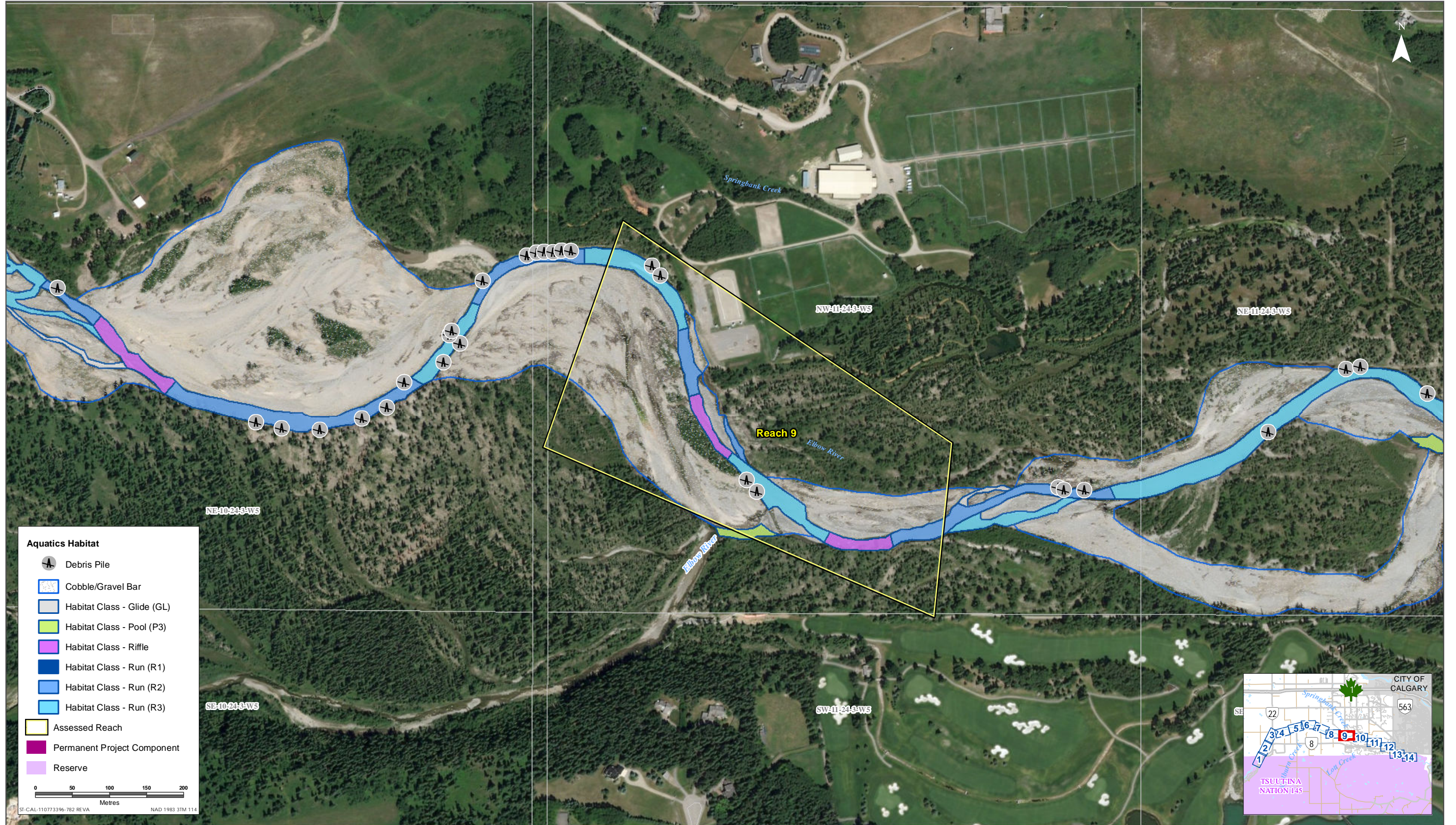
Sources: Base Data - Government of Alberta, Government of Canada. Thematic Data - Stantec Ltd.  
Imagery: Source: Esri, DigitalGlobe, GeoEye, Earthstar Geographics, CNES/Airbus DS, USDA, USGS, AeroGRID, IGN, and the GIS User Community



Sources: Base Data - Government of Alberta, Government of Canada. Thematic Data - Stantec Ltd.  
Imagery: Source: Esri, DigitalGlobe, GeoEye, Earthstar Geographics, CNES/Airbus DS, USDA, USGS, AeroGRID, IGN, and the GIS User Community



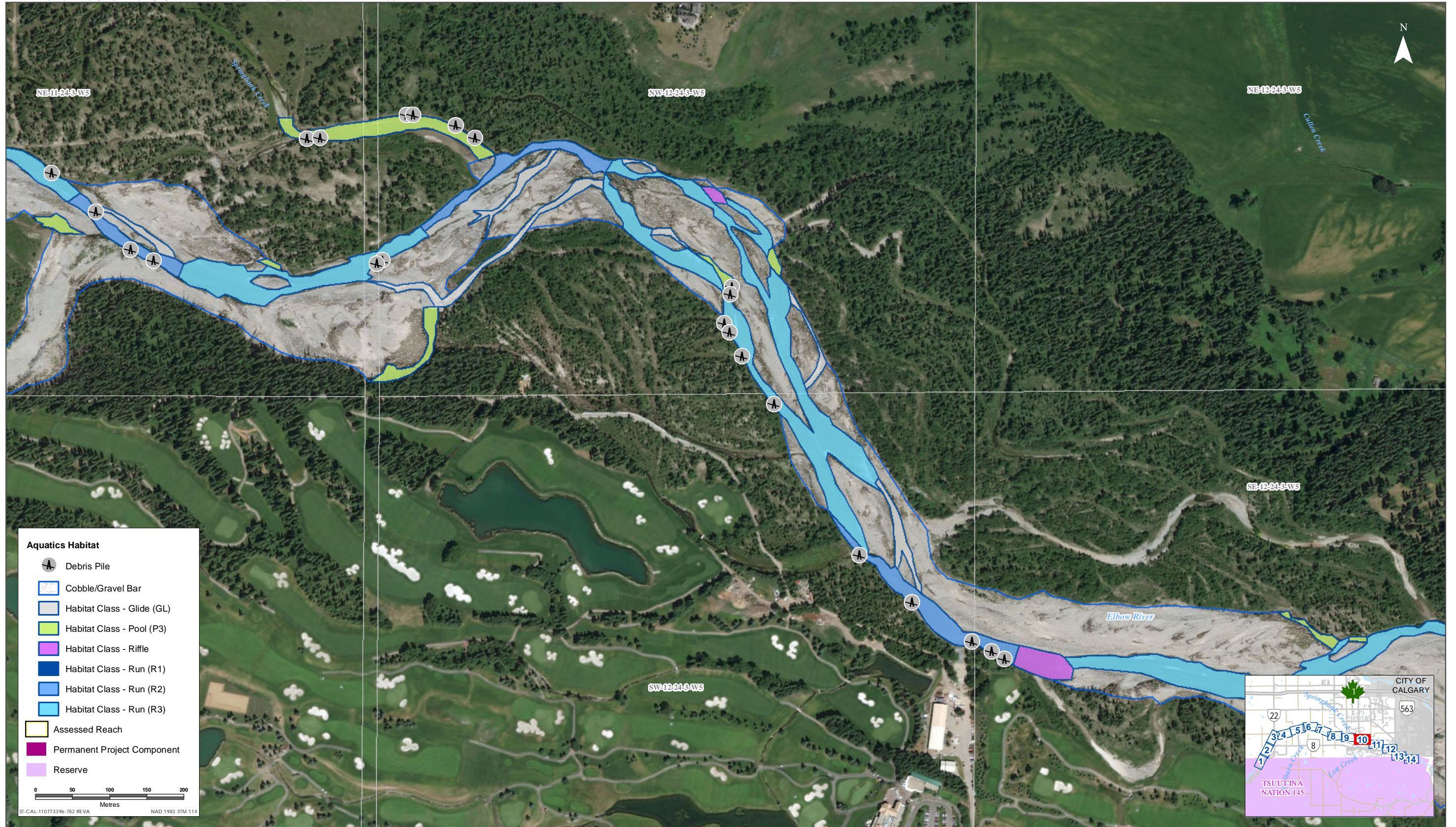
Habitat Mapping of the Elbow River and Associated Reaches within Proximity to the PDA



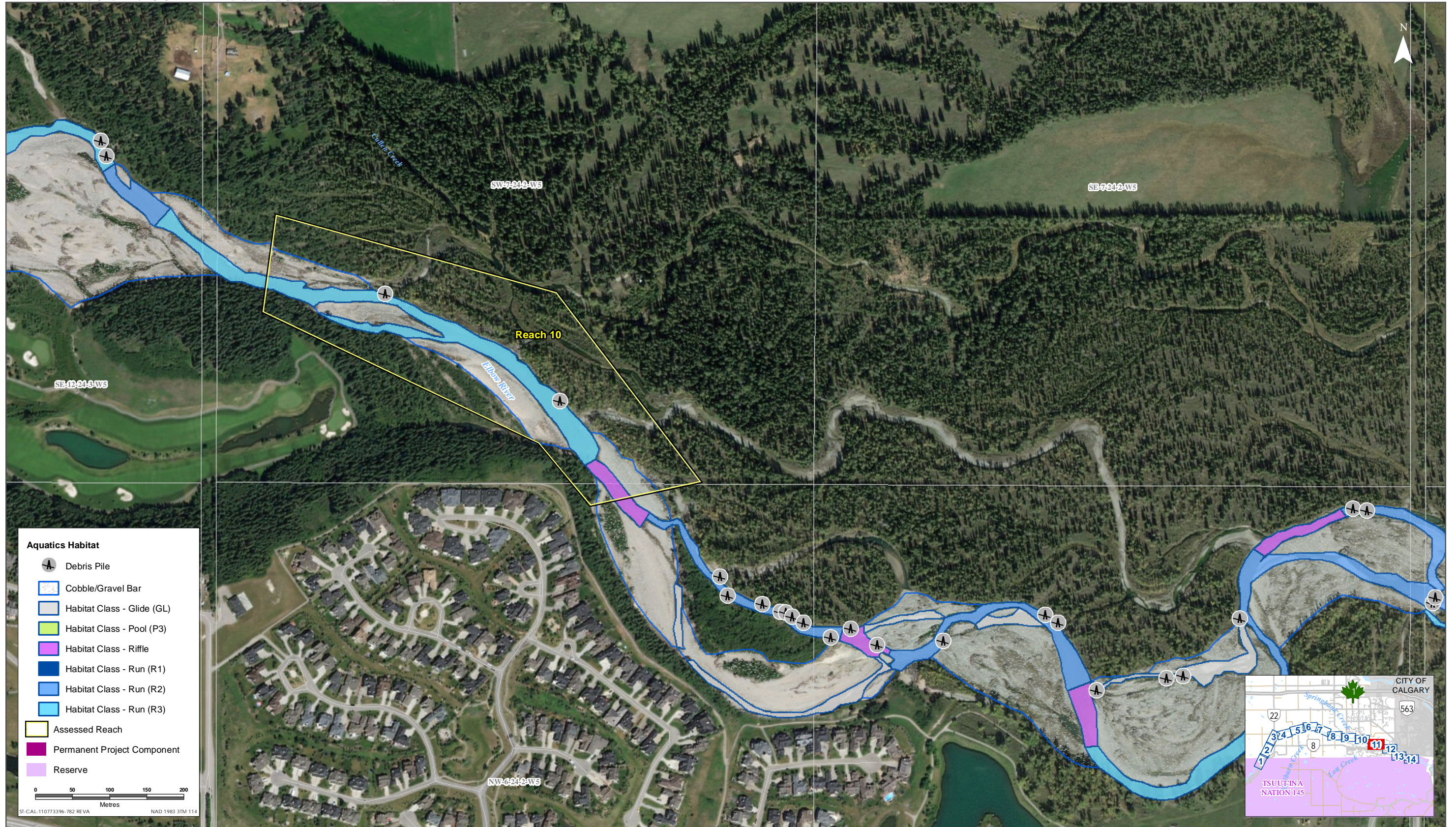
Sources: Base Data - Government of Alberta, Government of Canada. Thematic Data - Stantec Ltd.  
 Imagery: Source: Esri, DigitalGlobe, GeoEye, Earthstar Geographics, CNES/Airbus DS, USDA, USGS, AeroGRID, IGN, and the GIS User Community



Habitat Mapping of the Elbow River and Associated Reaches within Proximity to the PDA



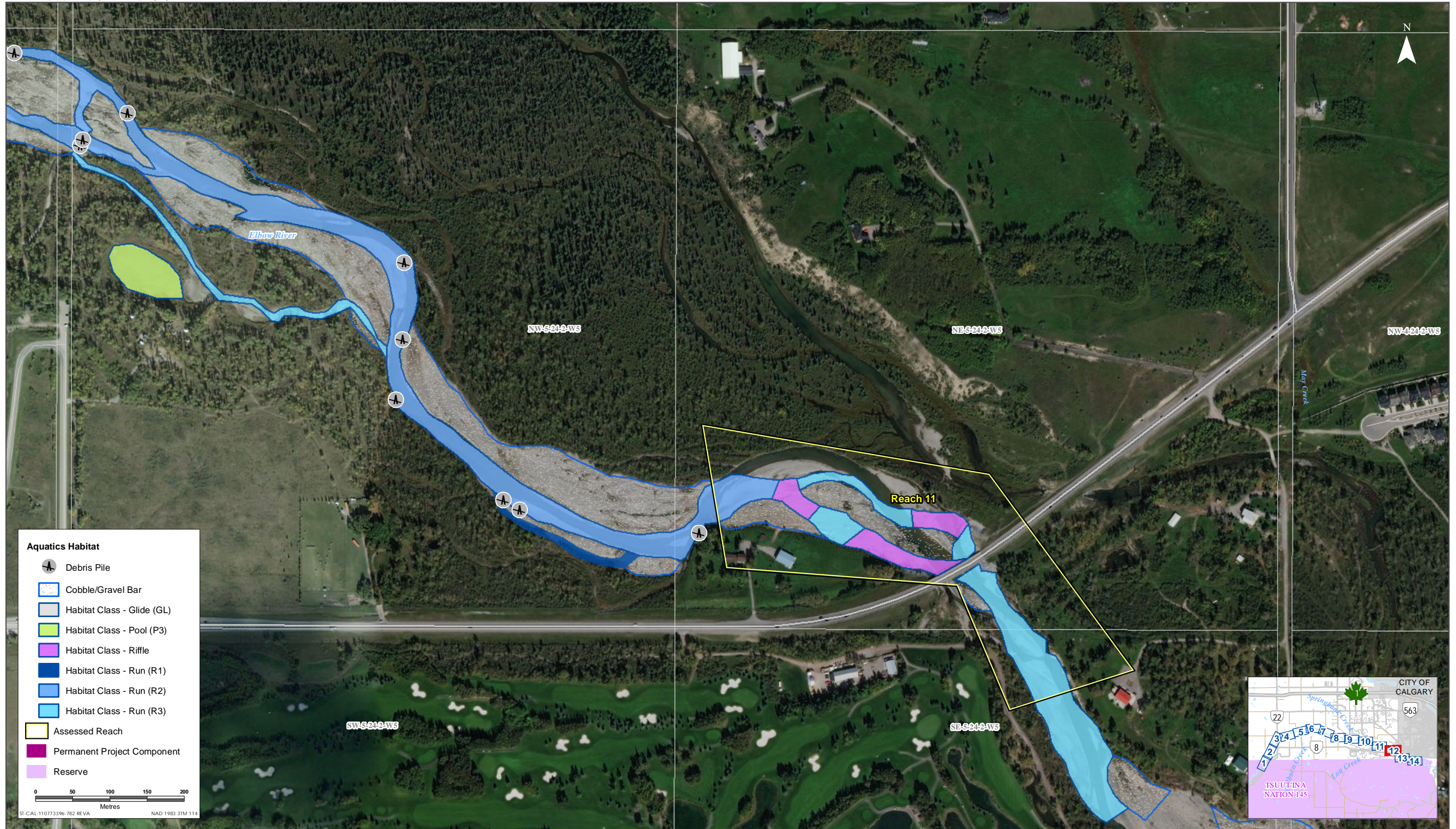
Sources: Base Data - Government of Alberta, Government of Canada. Thematic Data - Stantec Ltd.  
Imagery: Source: Esri, DigitalGlobe, GeoEye, Earthstar Geographics, CNES/Airbus DS, USDA, USGS, AeroGRID, IGN, and the GIS User Community



Sources: Base Data - Government of Alberta, Government of Canada. Thematic Data - Stantec Ltd.  
Imagery: Source: Esri, DigitalGlobe, GeoEye, Earthstar Geographics, CNES/Airbus DS, USDA, USGS, AeroGRID, IGN, and the GIS User Community



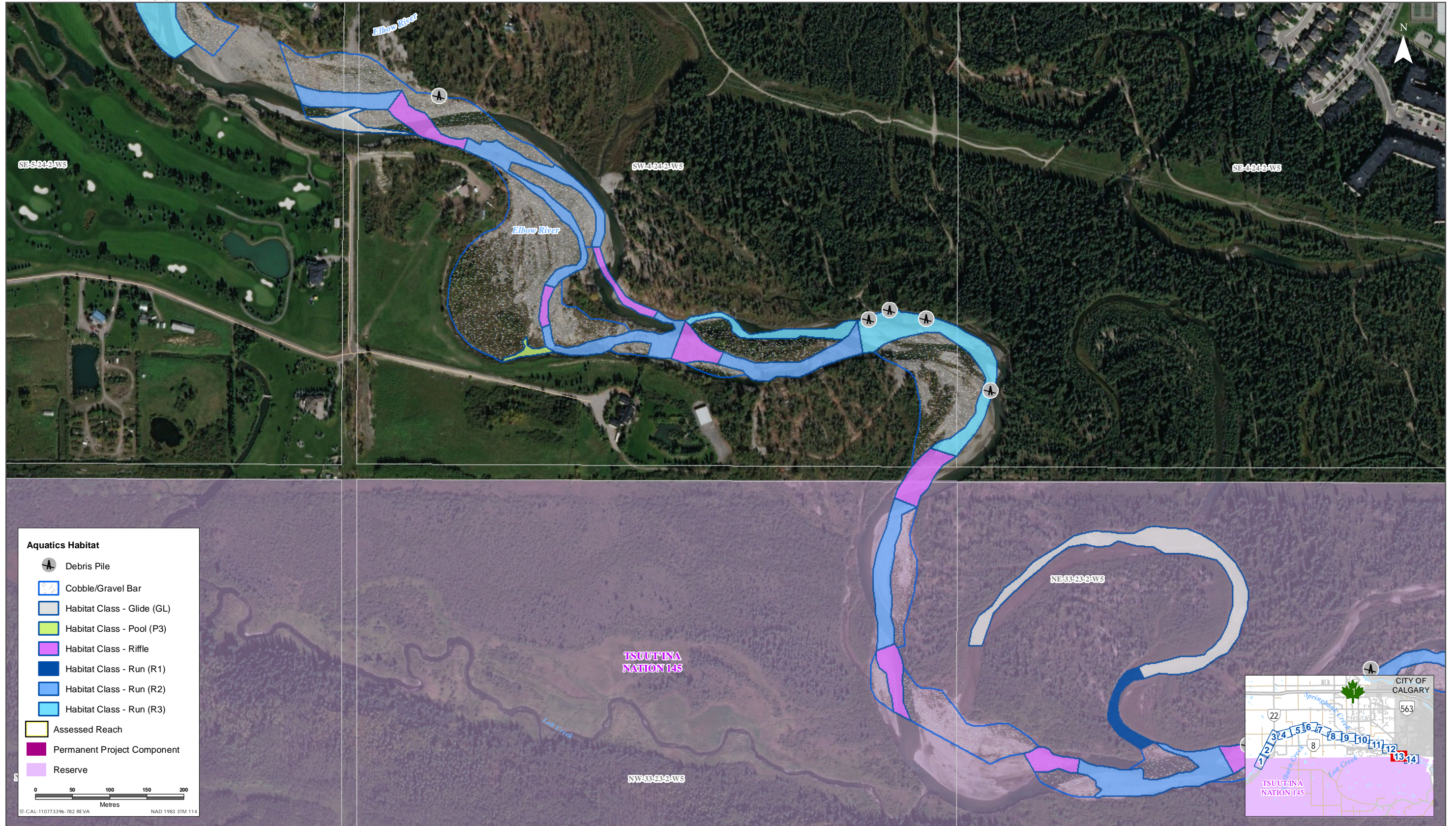
Habitat Mapping of the Elbow River and Associated Reaches within Proximity to the PDA



Sources: Base Data - Government of Alberta, Government of Canada. Thematic Data - Stantec Ltd.  
 Imagery: Source: Esri, DigitalGlobe, GeoEye, Earthstar Geographics, CNES/Airbus DS, USDA, USGS, AeroGRID, IGN, and the GIS User Community



Habitat Mapping of the Elbow River and Associated Reaches within Proximity to the PDA

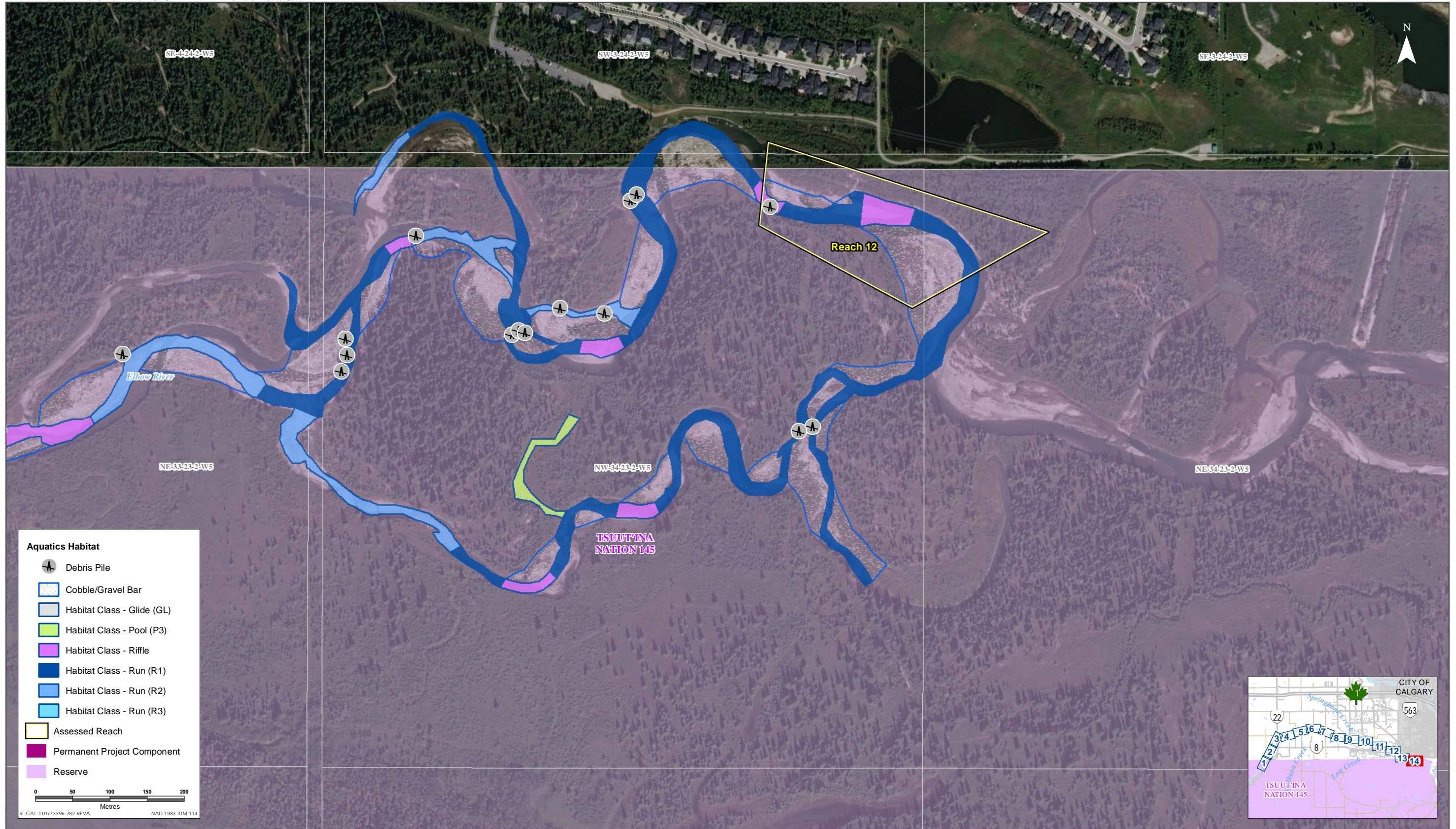


Sources: Base Data - Government of Alberta, Government of Canada. Thematic Data - Stantec Ltd.  
 Imagery: Source: Esri, DigitalGlobe, GeoEye, Earthstar Geographics, CNES/Airbus DS, USDA, USGS, AeroGRID, IGN, and the GIS User Community

Habitat Mapping of the Elbow River and Associated Reaches within Proximity to the PDA

Figure IR361-13





Sources: Base Data - Government of Alberta, Government of Canada. Thematic Data - Stantec Ltd.  
Imagery: Source: Esri, DigitalGlobe, GeoEye, Earthstar Geographics, CNES/Airbus DS, USDA, USGS, AeroGRID, IGN, and the GIS User Community

