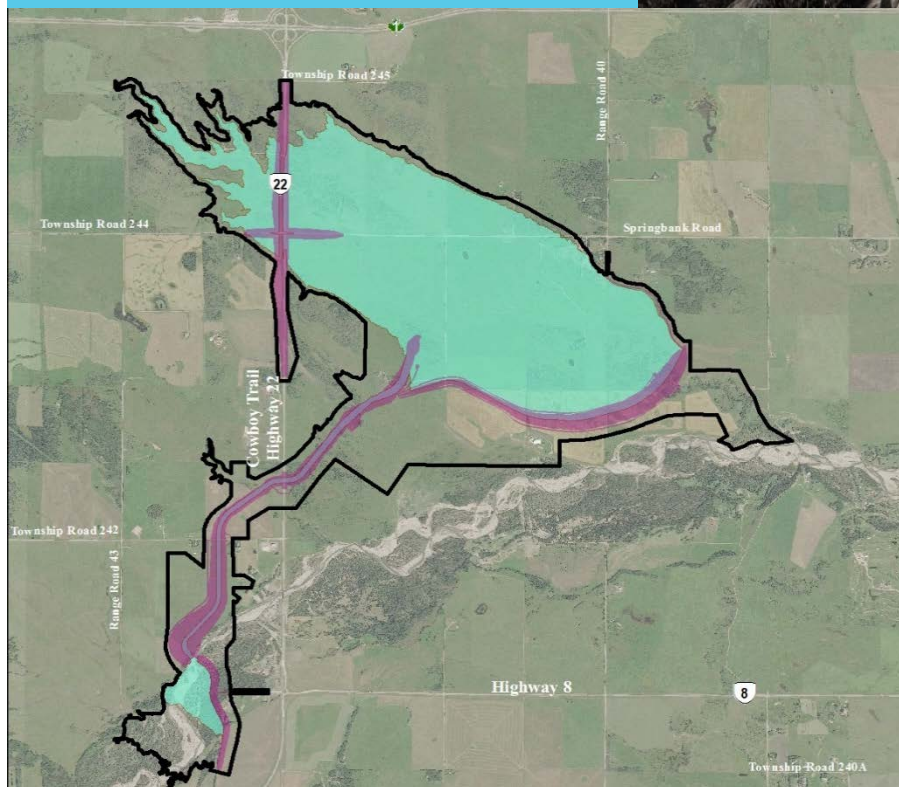


Springbank Off-stream Reservoir Project



Response to
NRCB and AEP
Supplemental
Information Request 1
July 28, 2018

May 2019

Table of Contents

1	ABBREVIATIONS	1.1
2	NATURAL RESOURCES CONSERVATION BOARD	2.1
2.1	GENERAL	2.1
	Question 1	2.1
	Question 2	2.3
	Question 3	2.4
	Question 4	2.9
	Question 5	2.10
	Question 6	2.12
	Question 7	2.17
	Question 8	2.18
	Question 9	2.19
	Question 10	2.20
	Question 11	2.21
	Question 12	2.21
	Question 13	2.22
	Question 14	2.22
	Question 15	2.24
	Question 16	2.24
	Question 17	2.30
	Question 18	2.31
	Question 19	2.32
	Question 20	2.34
	Question 21	2.36
	Question 22	2.38
	Question 23	2.41
	Question 24	2.42
	Question 25	2.42
	Question 26	2.44
	Question 27	2.45
	Question 28	2.45
	Question 29	2.46
	Question 30	2.48
	Question 31	2.49
	Question 32	2.51
	Question 33	2.53
	Question 34	2.55
	Question 35	2.59
	Question 36	2.61
	Question 37	2.62
	Question 38	2.62
	Question 39	2.63

ALBERTA TRANSPORTATION SPRINGBANK OFF-STREAM RESERVOIR PROJECT
RESPONSE TO NRCB AND AEP SUPPLEMENTAL INFORMATION REQUEST 1, JULY 28, 2018

Question 40	2.63
Question 41	2.64
Question 42	2.65
Question 43	2.67
Question 44	2.68
Question 45	2.69
Question 46	2.69
Question 47	2.70
Question 48	2.70
Question 49	2.72
Question 50	2.72
Question 51	2.73
Question 52	2.74
Question 53	2.79
Question 54	2.79
Question 55	2.82
Question 56	2.85
Question 57	2.85
Question 58	2.87
Question 59	2.91
Question 60	2.92
Question 61	2.93
Question 62	2.96
Question 63	2.97
Question 64	2.98
Question 65	2.100
Question 66	2.101
Question 67	2.101
Question 68	2.103
Question 69	2.104
Question 70	2.106
Question 71	2.108
Question 72	2.109
Question 73	2.111
Question 74	2.113
Question 75	2.113
Question 76	2.115
Question 77	2.119
Question 78	2.120
Question 79	2.120
Question 80	2.124
Question 81	2.125
Question 82	2.125
Question 83	2.126
Question 84	2.130

**ALBERTA TRANSPORTATION SPRINGBANK OFF-STREAM RESERVOIR PROJECT
RESPONSE TO NRCB AND AEP SUPPLEMENTAL INFORMATION REQUEST 1, JULY 28, 2018**

Question 85	2.131
Question 86	2.137
Question 87	2.140
Question 88	2.142
Question 89	2.143
Question 90	2.144
Question 91	2.144
Question 92	2.145
Question 93	2.146
Question 94	2.148
Question 95	2.149
Question 96	2.155
Question 97	2.156
Question 98	2.158
Question 99	2.161
Question 100	2.165
Question 101	2.175
Question 102	2.178
Question 103	2.180
Question 104	2.183
Question 105	2.184
Question 106	2.186
Question 107	2.187
Question 108	2.188
Question 109	2.189
Question 110	2.190
Question 111	2.190
Question 112	2.191
Question 113	2.192
Question 114	2.196
Question 115	2.199
Question 116	2.201
Question 117	2.201
Question 118	2.202
Question 119	2.203
Question 120	2.205
Question 121	2.205
Question 122	2.206
Question 123	2.207
Question 124	2.209
Question 125	2.211
Question 126	2.212

**ALBERTA TRANSPORTATION SPRINGBANK OFF-STREAM RESERVOIR PROJECT
 RESPONSE TO NRCB AND AEP SUPPLEMENTAL INFORMATION REQUEST 1, JULY 28, 2018**

3	GENERAL	3.1
3.1	PUBLIC ENGAGEMENT AND ABORIGINAL CONSULTATION	3.1
	Question 127	3.1
	Question 128	3.1
	Question 129	3.2
	Question 130	3.5
	Question 131	3.6
	Question 132	3.6
	Question 133	3.7
	Question 134	3.8
	Question 135	3.9
	Question 136	3.10
	Question 137	3.11
	Question 138	3.12
	Question 139	3.13
	Question 140	3.15
	Question 141	3.15
	Question 142	3.16
	Question 143	3.18
	Question 144	3.19
	Question 145	3.20
	Question 146	3.21
	Question 147	3.22
	Question 148	3.23
	Question 149	3.25
	Question 150	3.25
	Question 151	3.26
	Question 152	3.27
	Question 153	3.28
	Question 154	3.30
	Question 155	3.30
	Question 156	3.32
	Question 157	3.34
	Question 158	3.35
	Question 159	3.38
	Question 160	3.40
	Question 161	3.49
3.2	NOISE	3.51
	Question 162	3.51
	Question 163	3.52
	Question 164	3.53
3.3	SOCIO-ECONOMIC	3.57
	Question 165	3.57
	Question 166	3.60
	Question 167	3.62



**ALBERTA TRANSPORTATION SPRINGBANK OFF-STREAM RESERVOIR PROJECT
 RESPONSE TO NRCB AND AEP SUPPLEMENTAL INFORMATION REQUEST 1, JULY 28, 2018**

Question 168	3.63
Question 169	3.64
Question 170	3.66
Question 171	3.68
Question 172	3.69
Question 173	3.69
Question 174	3.70
Question 175	3.71
Question 176	3.71
Question 177	3.72
Question 178	3.73
Question 179	3.75
Question 180	3.79
Question 181	3.79
Question 182	3.80
Question 183	3.81
Question 184	3.84
Question 185	3.84
Question 186	3.86
Question 187	3.87
Question 188	3.88
Question 189	3.89
Question 190	3.90
Question 191	3.90
Question 192	3.91
Question 193	3.92
Question 194	3.93
Question 195	3.94
Question 196	3.95
Question 197	3.96
Question 198	3.96
Question 199	3.97
Question 200	3.98
Question 201	3.100
Question 202	3.100
3.4 TRANSPORTATION	3.103
Question 203	3.103
Question 204	3.104
4 AIR	4.1
4.1 EMISSIONS MANAGEMENT	4.1
Question 205	4.1
Question 206	4.3
4.2 DISPERSION MODELLING	4.7
Question 207	4.7

**ALBERTA TRANSPORTATION SPRINGBANK OFF-STREAM RESERVOIR PROJECT
 RESPONSE TO NRCB AND AEP SUPPLEMENTAL INFORMATION REQUEST 1, JULY 28, 2018**

	Question 208	4.8
4.3	AIR QUALITY ASSESSMENT.....	4.9
	Question 209	4.9
	Question 210	4.11
5	WATER.....	5.1
5.1	WATER MANAGEMENT.....	5.1
	Question 211	5.1
	Question 212	5.3
	Question 213	5.4
	Question 214	5.5
5.2	HYDROGEOLOGY.....	5.7
	Question 215	5.7
	Question 216	5.8
	Question 217	5.9
	Question 218	5.13
	Question 219	5.14
	Question 220	5.15
	Question 221	5.16
	Question 222	5.17
	Question 223	5.18
	Question 224	5.19
	Question 225	5.23
	Question 226	5.24
	Question 227	5.25
	Question 228	5.26
	Question 229	5.27
	Question 230	5.27
	Question 231	5.28
	Question 232	5.29
	Question 233	5.30
	Question 234	5.31
	Question 235	5.32
	Question 236	5.35
	Question 237	5.36
	Question 238	5.36
	Question 239	5.37
	Question 240	5.37
	Question 241	5.38
	Question 242	5.38
	Question 243	5.39
	Question 244	5.41
	Question 245	5.45
	Question 246	5.47
	Question 247	5.47

**ALBERTA TRANSPORTATION SPRINGBANK OFF-STREAM RESERVOIR PROJECT
 RESPONSE TO NRCB AND AEP SUPPLEMENTAL INFORMATION REQUEST 1, JULY 28, 2018**

	Question 248	5.48
	Question 249	5.49
	Question 250	5.49
	Question 251	5.50
	Question 252	5.51
	Question 253	5.51
	Question 254	5.52
	Question 255	5.53
	Question 256	5.55
	Question 257	5.56
	Question 258	5.57
	Question 259	5.58
5.3	HYDROLOGY	5.61
	Question 260	5.61
	Question 261	5.64
	Question 262	5.71
	Question 263	5.72
	Question 264	5.74
	Question 265	5.75
	Question 266	5.79
	Question 267	5.80
	Question 268	5.80
	Question 269	5.82
	Question 270	5.84
	Question 271	5.85
	Question 272	5.86
	Question 273	5.87
	Question 274	5.88
	Question 275	5.91
	Question 276	5.93
	Question 277	5.94
	Question 278	5.95
	Question 279	5.96
	Question 280	5.99
	Question 281	5.101
	Question 282	5.101
	Question 283	5.104
	Question 284	5.106
	Question 285	5.107
	Question 286	5.108
	Question 287	5.111
	Question 288	5.113
	Question 289	5.114
	Question 290	5.118

ALBERTA TRANSPORTATION SPRINGBANK OFF-STREAM RESERVOIR PROJECT
RESPONSE TO NRCB AND AEP SUPPLEMENTAL INFORMATION REQUEST 1, JULY 28, 2018

5.4	SURFACE WATER QUALITY	5.121
	Question 291	5.121
	Question 292	5.123
	Question 293	5.124
	Question 294	5.131
	Question 295	5.131
	Question 296	5.135
	Question 297	5.140
	Question 298	5.142
	Question 299	5.144
	Question 300	5.145
	Question 301	5.146
	Question 302	5.147
	Question 303	5.150
	Question 304	5.154
	Question 305	5.161
	Question 306	5.162
	Question 307	5.163
	Question 308	5.164
	Question 309	5.185
	Question 310	5.187
	Question 311	5.188
	Question 312	5.189
	Question 313	5.190
	Question 314	5.190
	Question 315	5.192
	Question 316	5.194
	Question 317	5.196
	Question 318	5.196
	Question 319	5.197
	Question 320	5.198
	Question 321	5.198
	Question 322	5.199
	Question 323	5.200
	Question 324	5.201
	Question 325	5.202
	Question 326	5.203
	Question 327	5.206
	Question 328	5.208
	Question 329	5.209
	Question 330	5.211
	Question 331	5.212
	Question 332	5.213
	Question 333	5.214
	Question 334	5.215

**ALBERTA TRANSPORTATION SPRINGBANK OFF-STREAM RESERVOIR PROJECT
 RESPONSE TO NRCB AND AEP SUPPLEMENTAL INFORMATION REQUEST 1, JULY 28, 2018**

	Question 335	5.216
	Question 336	5.217
	Question 337	5.218
	Question 338	5.220
	Question 339	5.221
	Question 340	5.221
	Question 341	5.222
5.5	AQUATICS	5.225
	Question 342	5.225
	Question 343	5.228
	Question 344	5.230
	Question 345	5.231
	Question 346	5.232
	Question 347	5.233
	Question 348	5.234
	Question 349	5.241
	Question 350	5.245
	Question 351	5.248
	Question 352	5.250
	Question 353	5.257
	Question 354	5.258
	Question 355	5.260
	Question 356	5.261
	Question 357	5.279
	Question 358	5.283
	Question 359	5.289
	Question 360	5.291
	Question 361	5.291
6	TERRESTRIAL	6.1
6.1	LAND USE AND LAND MANAGEMENT	6.1
	Question 362	6.1
6.2	CONSERVATION AND RECLAMATION	6.3
	Question 363	6.3
	Question 364	6.7
	Question 365	6.7
	Question 366	6.9
	Question 367	6.11
	Question 368	6.15
	Question 369	6.21
	Question 370	6.22
	Question 371	6.26
	Question 372	6.27
	Question 373	6.29

**ALBERTA TRANSPORTATION SPRINGBANK OFF-STREAM RESERVOIR PROJECT
 RESPONSE TO NRCB AND AEP SUPPLEMENTAL INFORMATION REQUEST 1, JULY 28, 2018**

6.3	TERRAIN AND SOILS	6.31
	Question 374	6.31
	Question 375	6.34
	Question 376	6.37
	Question 377	6.39
	Question 378	6.41
	Question 379	6.44
	Question 380	6.45
	Question 381	6.45
	Question 382	6.54
	Question 383	6.56
	Question 384	6.57
	Question 385	6.62
	Question 386	6.75
	Question 387	6.76
	Question 388	6.80
	Question 389	6.83
	Question 390	6.85
	Question 391	6.87
	Question 392	6.88
	Question 393	6.92
	Question 394	6.93
	Question 395	6.96
	Question 396	6.97
	Question 397	6.98
	Question 398	6.100
	Question 399	6.101
	Question 400	6.103
6.4	VEGETATION	6.105
	Question 401	6.105
	Question 402	6.105
	Question 403	6.108
	Question 404	6.109
	Question 405	6.115
	Question 406	6.116
	Question 407	6.117
6.5	WILDLIFE	6.119
	Question 408	6.119
	Question 409	6.122
	Question 410	6.123
	Question 411	6.126
	Question 412	6.129
	Question 413	6.130
	Question 414	6.132
	Question 415	6.134



**ALBERTA TRANSPORTATION SPRINGBANK OFF-STREAM RESERVOIR PROJECT
 RESPONSE TO NRCB AND AEP SUPPLEMENTAL INFORMATION REQUEST 1, JULY 28, 2018**

Question 416	6.135
Question 417	6.136
Question 418	6.136
Question 419	6.139
Question 420	6.140
Question 421	6.142
Question 422	6.144
Question 423	6.145
Question 424	6.146
Question 425	6.147
Question 426	6.147
Question 427	6.148
Question 428	6.153
Question 429	6.155
Question 430	6.156
Question 431	6.188
Question 432	6.189
Question 433	6.191
Question 434	6.192
Question 435	6.193
7 HEALTH.....	7.1
Question 436	7.1
Question 437	7.7
Question 438	7.9
Question 439	7.11
Question 440	7.14
Question 441	7.17
Question 442	7.20
Question 443	7.22
Question 444	7.26
Question 445	7.38
Question 446	7.38
Question 447	7.41
Question 448	7.44
8 DAM SAFETY.....	8.1
Question 449	8.1
Question 450	8.1
Question 451	8.2
Question 452	8.4
Question 453	8.4
Question 454	8.5
Question 455	8.7
Question 456	8.8

ALBERTA TRANSPORTATION SPRINGBANK OFF-STREAM RESERVOIR PROJECT
RESPONSE TO NRCB AND AEP SUPPLEMENTAL INFORMATION REQUEST 1, JULY 28, 2018

Question 457	8.11
Question 458	8.16
Question 459	8.18
Question 460	8.19
Question 461	8.20
Question 462	8.23
Question 463	8.25
Question 464	8.30
Question 465	8.32
Question 466	8.34
Question 467	8.35
Question 468	8.35
Question 469	8.40
Question 470	8.43
Question 471	8.44
Question 472	8.45
Question 473	8.47
Question 474	8.48
Question 475	8.49
Question 476	8.53
Question 477	8.56
Question 478	8.57
Question 479	8.58
Question 480	8.58
Question 481	8.59
Question 482	8.60
Question 483	8.62
Question 484	8.62
Question 485	8.64
Question 486	8.65
Question 487	8.66
Question 488	8.69
Question 489	8.69
Question 490	8.72
Question 491	8.74
Question 492	8.75
Question 493	8.78
Question 494	8.79
Question 495	8.79
Question 496	8.81
Question 497	8.82
Question 498	8.84
Question 499	8.86
Question 500	8.87
Question 501	8.88

**ALBERTA TRANSPORTATION SPRINGBANK OFF-STREAM RESERVOIR PROJECT
 RESPONSE TO NRCB AND AEP SUPPLEMENTAL INFORMATION REQUEST 1, JULY 28, 2018**

Question 502	8.90
Question 503	8.91
Question 504	8.92
Question 505	8.94
Question 506	8.95
Question 507	8.96
Question 508	8.97
Question 509	8.98
Question 510	8.99
Question 511	8.101
Question 512	8.101
Question 513	8.102
Question 514	8.103
Question 515	8.104
Question 516	8.105
Question 517	8.106
Question 518	8.107
Question 519	8.107
Question 520	8.108
Question 521	8.109
Question 522	8.116
Question 523	8.119
Question 524	8.126
Question 525	8.130
Question 526	8.133
Question 527	8.138
Question 528	8.145
9 APPROVALS.....	9.1
9.1 WATER ACT	9.1
Question 529	9.1
Question 530	9.2
Question 531	9.9
Question 532	9.11
Question 533	9.12
9.2 OTHER.....	9.17
Question 534	9.17
Question 535	9.18
Question 536	9.21
Question 537	9.22
10 ERRATA	10.1
Question 538	10.1
Question 539	10.5
Question 540	10.6

**ALBERTA TRANSPORTATION SPRINGBANK OFF-STREAM RESERVOIR PROJECT
RESPONSE TO NRCB AND AEP SUPPLEMENTAL INFORMATION REQUEST 1, JULY 28, 2018**

Question 541	10.6
Question 542	10.7
Question 543	10.8
Question 544	10.9
Question 545	10.9
Question 546	10.10
Question 547	10.10
Question 548	10.12
Question 549	10.12
Question 550	10.13
Question 551	10.13
Question 552	10.14
Question 553	10.14
Question 554	10.16
Question 555	10.17
Question 556	10.17
Question 557	10.18
Question 558	10.18
Question 559	10.18
Question 560	10.19
Question 561	10.20
Question 562	10.20
Question 563	10.21
Question 564	10.21
Question 565	10.21
Question 566	10.22
Question 567	10.22
Question 568	10.22
Question 569	10.23
Question 570	10.23
Question 571	10.24
Question 572	10.24
Question 573	10.24
Question 574	10.25
Question 575	10.25
Question 576	10.26
Question 577	10.26
Question 578	10.28
Question 579	10.29
Question 580	10.30
Question 581	10.30
Question 582	10.31
Question 583	10.31
Question 584	10.31
Question 585	10.32

**ALBERTA TRANSPORTATION SPRINGBANK OFF-STREAM RESERVOIR PROJECT
RESPONSE TO NRCB AND AEP SUPPLEMENTAL INFORMATION REQUEST 1, JULY 28, 2018**

Question 586	10.32
Question 587	10.33
Question 588	10.33
Question 589	10.33
Question 590	10.34
Question 591	10.35
Question 592	10.35
Question 593	10.35

List of Tables

Table IR1-1	Conceptual Cost Opinion for Replacing the Unnamed Creek with an Engineered Channel.....	2.2
Table IR3-1	Public Land Use Zones and Provincial Recreation Areas in the MC1 Option Area	2.4
Table IR3-2	Campgrounds and Day Use Areas in the MC1 Option Area	2.5
Table IR3-3	Identified Non-motorized Recreational Trails in the MC1 Option Area.....	2.6
Table IR6-1	Alternative Option Comparison (revision to Volume 1, Table 2-3)	2.12
Table IR14-1	Additional Reports Related to the MC1 Option.....	2.23
Table IR16-1	Construction Blasting Emissions	2.27
Table IR16-2	Updated Construction Emission Rates	2.28
Table IR18-1	Reduction of Annual Damage due to the Project (SR1)	2.32
Table IR21-1	SR1 and MC1 Option Earthworks Components.....	2.38
Table IR22-1	Present Values Assuming a 4% Discount Rate	2.40
Table IR22-2	Present Values Assuming a 3% Discount Rate	2.40
Table IR22-3	Present Values Assuming an 8% Discount Rate.....	2.40
Table IR31-1	Discounted Costs for SR1 and MC1 Option in 2017 Benefit/Cost Analysis	2.50
Table IR31-2	Discounted Costs for SR1 and MC1 Option – April 2019 Benefit/Cost Analysis.....	2.51
Table IR36-1	Costs for Road Modifications.....	2.61
Table IR48-1	Project Residual Effects on Wildlife and Biodiversity during Construction and Dry Operations (Revision of Table 11-14 in Volume 3A, Section 11)	2.71
Table IR55-1	Project Effects on Hydrology during Flood and Post-Flood Operations (revision to Volume 3A, Section 6, Table 6-11)	2.84
Table IR56-1	Summary of Mean Peak Monthly Flow for Bragg Creek and Sarcee Bridge (1979-2016)	2.85
Table IR73-1	Backwater Effects from the Project	2.111
Table IR75-1	Turbidity and Total Suspended Solids (TSS) in Elbow River at Highway 22	2.114
Table IR76-1	TDS versus Conductivity in Elbow River at Highway 22, 2016 sample results	2.116
Table IR76-2	TDS versus Conductivity in Elbow River at Highway 22 and Upstream of Twin Bridges at Highway 8, Historical Data	2.117
Table IR76-3	Percent Difference Between Used and Validated TDS Values	2.119
Table IR79-1	Relevant Water Quality Data for the Regional Assessment Area (from Volume 4, Appendix K, Table 2-2)	2.121
Table IR83-1	Seasonal Data Point Distribution for Dissolved Oxygen	2.127
Table IR86-1	Suspended Sediment Concentrations in Water Released from the Off-Stream Reservoir after a Design Flood	2.137
Table IR86-2	Suspended Sediment Concentrations in Water Released from the Off-Stream Reservoir after a 1:100 Year Flood.....	2.138

**ALBERTA TRANSPORTATION SPRINGBANK OFF-STREAM RESERVOIR PROJECT
 RESPONSE TO NRCB AND AEP SUPPLEMENTAL INFORMATION REQUEST 1, JULY 28, 2018**

Table IR86-3	Suspended Sediment Concentrations in Water Released from the Off-Stream Reservoir after a 1:10 Year Flood.....	2.138
Table IR89-1	Seasonal Variation Metric and Distance from TSS SVM Results for Dissolved Oxygen and Temperature (correction to Volume 4, Appendix K, Table 3-1).....	2.143
Table IR95-1	2D Hydraulic Assessment Results of Instream Components for Fish Passage During Low Flow (0.8m ³ /s).....	2.151
Table IR95-2	Confidence Intervals for Best Fit Distribution of Selected Biologically Sensitive Period	2.151
Table IR98-1	Backwater Effects from the Project	2.159
Table IR98-2	Fish Habitat Quality in Elbow River at Reach 2 Upstream of the Service Spillway and Diversion Inlet.....	2.161
Table IR99-1	Fish habitat in Elbow River in the Vicinity of the Confluence with Unnamed Creek (Low-Level Outlet Channel).....	2.165
Table IR100-1	Suspended Sediment Concentrations in Release Water and Downstream (from Volume 3B, Section 6, Table 6-7, Table 6-8, and Table 6-9)	2.167
Table IR100-2	Risk to Fish from Suspended Sediment Increases.....	2.171
Table IR102-1	Water Surface Elevation Drop across Service Spillway during Flood Operations	2.179
Table IR102-2	Water Surface Elevation Drop across Diversion Inlet Spillway during Flood Operations.....	2.179
Table IR114-1	Location of the Copithorne Gravel Pit in Relation to Selected Valued Components (VCs).....	2.197
Table IR115-1	Legal Locations of Current Residences within the PDA	2.199
Table IR118-1	Construction Costs for the Township Road 242 Options	2.203
Table IR124-1	Predicted PM _{2.5} Concentrations and Exposure Ratios at Receptor SR38 (Camp Gardner)	2.209
Table IR125-1	Predicted DEP Concentrations and Exposure Ratios at SR38	2.211
Table IR136-1	Distances of the Closest Edge of the PDA to the Closest Edge of a Reserve.....	3.11
Table IR138-1	Current Use Sites and Areas within the RAA (revision to Volume 3A, Section 14, Table 14-5)	3.12
Table IR139-1	Relationship Between the Effect Pathways Used for Traditional Use Resources and Effect Pathways for Other VCs.....	3.14
Table IR153-1	Meetings Between Alberta Transportation and Treaty 7 Nations After EIA Filing	3.29
Table IR156-1	Mitigation for Change in Availability of Traditional Resources for Current Use (from Volume 3A, Section 14, Table 14-6)	3.33
Table IR158-1	Traditional Resources within the RAA (from Volume 3A, Section 14, Table 14-3)	3.36
Table IR159-1	Date and Consultation Type with Treaty 7 First Nations for Project Monitoring and Economic Opportunities.....	3.38
Table IR160-1	Treaty 7 First Nations Groundwater Monitoring Requests and Recommendations.....	3.41

**ALBERTA TRANSPORTATION SPRINGBANK OFF-STREAM RESERVOIR PROJECT
 RESPONSE TO NRCB AND AEP SUPPLEMENTAL INFORMATION REQUEST 1, JULY 28, 2018**

Table IR160-2	Treaty 7 First Nations Surface Water Monitoring Requests and Recommendations.....	3.43
Table IR160-3	Treaty 7 First Nations Wildlife Monitoring Requests and Recommendations.....	3.45
Table IR160-4	Treaty 7 First Nations Vegetation Monitoring Requests and Recommendations.....	3.47
Table IR169-1	Project Construction Workforce	3.65
Table IR185-1	Construction Cost Increase Associated with the Debris Deflector	3.85
Table IR206-1	Air Quality Objectives During Construction, PM _{2.5} and TSP	4.4
Table IR209-1	Common Microbial Oxidation – Reduction Reactions	4.10
Table IR210-1	Maximum Predicted Concentrations along Sections of Highway 22 and Springbank Road that Intersect the PDA (Application Case)	4.12
Table IR235-1	Outcrop Mapping Descriptions.....	5.34
Table IR259-1	Interactions between Valued Components and the Project (Revised from Volume 2, Section 5, Table 5-2)	5.59
Table IR260-1	Comparison of 2017 Hydrograph Data and Preliminary Hydrograph Data at Two Locations	5.63
Table IR261-1	Hydrometric Stations Summary for Calculation of Flood Frequency Analysis.....	5.65
Table IR263-1	Lining for the Diversion Channel.....	5.73
Table IR279-1	Project Interactions with Hydrology.....	5.98
Table IR280-1	Project Effects on Hydrology during Flood and Post-Flood Operations (revision to Volume 3B, Section 6, Table 6-11)	5.100
Table IR283-1	Volumes Diverted, Retained in the Reservoir and Released back to the Elbow River (updated Volume 3B, Section 6, Table 6-4).....	5.105
Table IR287-1	Project Effects on Hydrology during Flood and Post-Flood Operations	5.111
Table IR289-1	Simulation Time Period used for the HD, ST and MT modelling	5.118
Table IR300-1	Suspended Sediment Mass, and Percent Diverted and Released from the Off-Stream Reservoir (from Table 6-6 in Volume 3B, Section 6)	5.145
Table IR304-1	Estimated Suspended Sediment Concentrations and Yields in the Elbow River, With and Without Diversion (from Volume 3B, Section 6, Table 6-6)	5.156
Table IR309-1	Total Suspended Sediment Concentrations at the End of the Release Period of Water from the Off-Stream Reservoir.....	5.186
Table IR309-2	Water Quality Guidelines for the Protection of Aquatic Life.....	5.186
Table IR314-1	Mass of Suspended Sediments Diverted during each of the Three Flood Scenarios (from Table 6-6; Volume 3B, Section 6.4).....	5.192
Table IR315-1	Monthly Temperature Values (Median, Mean and Standard Deviation) for Elbow River at Bragg Creek, Highway 22 and at Sarcee Bridge.....	5.193
Table IR321-1	Suspended Sediment Criteria.....	5.199
Table IR334-1	Parameters Sets with Extreme Values Removed.....	5.215



**ALBERTA TRANSPORTATION SPRINGBANK OFF-STREAM RESERVOIR PROJECT
 RESPONSE TO NRCB AND AEP SUPPLEMENTAL INFORMATION REQUEST 1, JULY 28, 2018**

Table IR342-1	Fish Sustainability Index (FSI) for Bull Trout and Westslope Cutthroat Trout in the Elbow River Watershed.....	5.226
Table IR342-2	Population Estimates for Bull Trout.....	5.227
Table IR343-1	Fish Species in the Elbow River near the Diversion Structure.....	5.229
Table IR346-1	Maintenance Schedule for the Diversion Structure.....	5.233
Table IR348-1	Suspended Sediment Concentrations in Released Flood Water at Three Locations	5.237
Table IR352-1	Water Quality Parameter Frequency and Location Monitoring	5.251
Table IR352-2	CCME and Alberta Water Quality Guidelines for the Protection of Aquatic Life and Elbow River Water Quality Objectives (From Volume 4, Appendix K, Section 2, Table 2-8).....	5.253
Table IR356-1	Summary of Environmental Effects Assessment (revision to Volume 3D, Section 3, Table 3-1)	5.263
Table IR358-1	Summary of Fisheries Reaches.....	5.285
Table IR368-1	Soil Units in the Terrain and Soils LAA at Post-Construction (from Volume 3A, Section 9, Table 9-13)	6.18
Table IR368-2	Changes in Areas of Agricultural Land Capability (from Volume 3A, Section 9, Table 9-14)	6.19
Table IR371-1	Native Seed Mix for Zone 6	6.27
Table IR373-1	Potential Erosion Control Mix	6.29
Table IR373-2	Native Seed Mix for Zone 6	6.30
Table IR381-1	Erosion Control Measures – Source Control (from Table 7.3 in the Erosion and Sediment Control Manual).....	6.49
Table IR388-1	Comparison of Parameters for Sampled Sediment and Soil	6.81
Table IR392-1	Comparison of Baseline Groundwater Electrical Conductivity and Sodium Adsorption Ratio to Salt Contamination and Remediation Guidelines for Soil ¹	6.90
Table IR404-1	Observed Plants Lacking Sufficient Characteristics for Positive Species Identification and Potential Rare Plant Species.....	6.111
Table IR430-1	Summary of Project Residual Effects on Species of Cultural Importance to Indigenous Groups during Construction and Dry Operations	6.157
Table IR436-1	Concerns Raised by Stakeholders during Engagement.....	7.5
Table IR437-1	Toxicological Reference Values (revision to Volume 3A, Section 15, Table 15-10 and Volume 4, Appendix O, Section 4, Table 4-1).....	7.8
Table IR440-1	Toxicological Reference Values (revision to Volume 3A, Section 15, Table 15-10 and Volume 4, Appendix O, Table 4-1).....	7.15
Table IR441-1	Exposure Concentrations and Exposure Ratios for 10-minute SO ₂ (Construction).....	7.18
Table IR443-1	Predicted Changes in Maximum and Minimum O ₃ Concentrations (ppb)	7.23
Table IR443-2	Change in Ozone Precursor Emissions (tonne/day)	7.24
Table IR457-1	Spillway Service Gates Failure Scenarios.....	8.15
Table IR463-1	Diversion Channel Elevations.....	8.26

**ALBERTA TRANSPORTATION SPRINGBANK OFF-STREAM RESERVOIR PROJECT
 RESPONSE TO NRCB AND AEP SUPPLEMENTAL INFORMATION REQUEST 1, JULY 28, 2018**

Table IR465-1	USBR Reservoir Drawdown Time Criteria	8.33
Table IR469-1	Dam Construction Quantities	8.40
Table IR472-1	Stability Analyses Results – Recommended 3.5H:1V Exterior Slopes	8.45
Table IR497-1	Mitigation Measures to Reduce Risk to the Low-Level Outlet Works	8.83
Table IR502-1	Correction to Footnotes in Table 5-5 (Volume 1, Section 5.2)	8.90
Table IR516-1	Flows in Project Components During an IDF	8.105
Table IR521-1	Acceptance Criteria for Hydraulic Structure	8.112
Table IR521-2	Diversion Inlet Centre Pier, Stability Analysis Summary	8.113
Table IR522-1	Service Spillway Center Pier, Stability Analysis Summary	8.117
Table IR523-1	Critical Design Load Case for the Diversion Channel	8.120
Table IR523-2	Slope Stability Analysis Input Parameters.....	8.122
Table IR523-3	Slope Stability Results.....	8.122
Table IR525-1	Recommended Field Soil Properties.....	8.131
Table IR525-2	Material Parameters Recommended for Analysis	8.131
Table IR526-1	Load Cases and Acceptance Criteria for Inlet Gate Structure Stability Analysis.....	8.134
Table IR526-2	Summary of Stability Analysis Results for the Inlet Gate Structure	8.135
Table IR526-3	Load Cases and Acceptance Criteria for Discharge Conduit Stability Analysis.....	8.136
Table IR526-4	Summary of Stability Analysis Results for the Discharge Conduit	8.136
Table IR526-5	Load Cases and Acceptance Criteria for Outlet Structure Stability Analysis.....	8.136
Table IR526-6	Summary of Stability Analysis Results for the Outlet Structure	8.137
Table IR527-1	Sediment Sample Raw Data from Bar Location in the Elbow River	8.141
Table IR528-1	Normal and Minimum Freeboard Calculations Summary	8.149
Table IR530-1	Vegetation and Wetland Cover Types Removed by Construction, Present in Dry Operations and Inundated during Floods (in the Off-Stream Reservoir)	9.3

List of Figures

Figure IR32-1	General Flood Damage Calculations Methodology	2.52
Figure IR33-1	MC1 Option Passage of the 2013 Flood	2.54
Figure IR34-1	Code of Practice for Water Bodies	2.58
Figure IR52-1	Draft Operational Procedures for the Project--Glenmore Reservoir System.....	2.77
Figure IR54-1	Hydrology and Surface Water Quality Spatial Boundaries	2.81
Figure IR57-1	Waterbodies in the PDA	2.86
Figure IR58-1	Surface Water Withdrawal Licences in the Hydrology Local Assessment Area	2.89
Figure IR61-1	Distances of Tsuut'ina Nation and Redwood Meadows from Project Features and Backwater Limit	2.95
Figure IR67-1	Measured and Simulated Water Level at Sarcee Bridge (WSC 05BJ010).....	2.102
Figure IR69-1	Suspended Sediment Concentrations and Shear Stress at Highway 22 for the Design Flood (from Volume 3B, Section 6, Figure 6-13).....	2.105
Figure IR72-1	Correlation Between Suspended Sediment Grain Size and River Flow Speed	2.110
Figure IR75-1	Relationship between Turbidity and Total Suspended Solids.....	2.115
Figure IR79-1	Relevant Water Quality Sites in the Regional Assessment Area (from Volume 4, Appendix K, Figure 2-1).....	2.123
Figure IR83-1	Dissolved Oxygen Concentration in the Elbow River Mainstem Sites and at the Glenmore Dam from 1979 to 2016.	2.128
Figure IR85-1	Flood Extents at the Low-Level Outlet Channel for 1 m ³ /s and 5 m ³ /s	2.133
Figure IR85-2	Flood Extents at the Low-Level Outlet Channel for 10 m ³ /s and 15 m ³ /s	2.134
Figure IR85-3	Flood Extents at the Low-Level Outlet Channel for 20 m ³ /s and 25 m ³ /s	2.135
Figure IR95-1a	Fish Passage Simulation Preliminary Design, 0.8 m ³ /s	2.153
Figure IR95-1b	Fish Passage Simulation Preliminary Design, 0.8 m ³ /s	2.154
Figure IR100-1	Suspended Sediment Concentrations in Released Water Associated with a Design Flood	2.168
Figure IR100-2	Suspended Sediment Concentrations in Released Water Associated with a 1:100 Year Flood	2.169
Figure IR100-3	Suspended Sediment Concentrations in Released Water Associated with a 1:10 Year Flood.....	2.170
Figure IR105-1	Mesh Size for the Service Spillway and Stilling Basin	2.185
Figure IR113-1	Proposed Location of Project Fencing	2.194
Figure IR113-2	Location of Proposed Portage Signage and Route.....	2.195
Figure IR114-1	Location of the Copithorne Gravel Pit in Relation to Selected VC Boundaries	2.198
Figure IR115-1	Existing Land Use and Residences in the PDA	2.200

**ALBERTA TRANSPORTATION SPRINGBANK OFF-STREAM RESERVOIR PROJECT
 RESPONSE TO NRCB AND AEP SUPPLEMENTAL INFORMATION REQUEST 1, JULY 28, 2018**

Figure IR122-1	Reservoir Inflow Routing for the Probable Maximum Flood with No Diversion Inlet Gate Closure	2.207
Figure IR165-1	Potential Reservoirs in the Elbow River Basin (from AMEC 2014)	3.58
Figure IR206-1	Preliminary Locations of Ambient Monitoring Stations during Construction	4.5
Figure IR224-1	Modelling Points of Interest	5.21
Figure IR235-1	Outcrop Mapping Locations	5.33
Figure IR244-1	Hydrograph of MW16-8-8/MW16-8-19	5.43
Figure IR244-2	Hydrograph of MW16-6-11/MW16-6-20	5.44
Figure IR260-1	Elbow River at Bragg Creek: Comparison of 2017 Final Hydrograph Data and Preliminary Hydrograph Data	5.62
Figure IR260-2	Elbow River at Sarcee Bridge: Comparison of 2017 Final Hydrograph Data and Preliminary Hydrograph Data	5.63
Figure IR261-1	Elbow River Basin Streamflow Station Locations	5.66
Figure IR261-2	Relationship between Annual Maximum Daily and Peak Instantaneous Flow at the Combined Station	5.67
Figure IR261-3	Relationship between Annual Maximum Daily and Peak Instantaneous Flow at the Bragg Creek Station	5.68
Figure IR261-4	Area Used for Local Runoff Volume Estimate	5.69
Figure IR265-1	Backwater Effects Design Flood	5.76
Figure IR265-2	Backwater Effects 1:100 Year	5.77
Figure IR265-3	Backwater Effects 1:10 Year	5.78
Figure IR274-1	Ground and Surface Water Withdrawal Licences in the Hydrology Regional Assessment Area	5.89
Figure IR275-1	Vegetation and Wetlands in the Local Study Area (from Volume 3A, Section 10, Figure 10-3)	5.92
Figure IR286-1	Suspended Sediment Concentrations in the Diversion Channel and Reservoir for a 1:10 Year Flood	5.109
Figure IR286-2	Suspended Sediment Concentrations in Released Water Associated with a 1:10 Year Flood	5.110
Figure IR289-1	Model Domain (I) for Elbow River between Bragg Creek and Glenmore Reservoir Dam	5.115
Figure IR289-2	Model Domain (II) for Diversion Channel and Off-Stream Reservoir	5.116
Figure IR289-3	Model Domain (III) for the Unnamed Creek Channel and Elbow River	5.117
Figure IR293-1	Model Domain for Elbow River between Bragg Creek and Outlet of the Glenmore Reservoir Dam.	5.125
Figure IR293-2	Closeup of Modelling Domain in Elbow River Near the Diversion Inlet	5.127
Figure IR293-3	Model Domain and Mesh System of Diversion Channel and Reservoir.	5.128
Figure IR293-4	Model Domain and Mesh System of the Unnamed Creek Channel and Elbow River	5.130

**ALBERTA TRANSPORTATION SPRINGBANK OFF-STREAM RESERVOIR PROJECT
 RESPONSE TO NRCB AND AEP SUPPLEMENTAL INFORMATION REQUEST 1, JULY 28, 2018**

Figure IR295-1	Off-Stream Reservoir Post-Flood Drawdown Hydrographs from Full Service Volume in the Reservoir	5.133
Figure IR296-1	Measured and Simulated Water Level at Sarcee Bridge (WSC 05BJ010).....	5.136
Figure IR296-2	Measured and Simulated Suspended Sediment Concentration (SSC) at Highway 22 Bridge and Twin Bridge.....	5.137
Figure IR304-1	1:100 Year Flood Diversion (from Volume 3B, Section 6, Figure 6-4).....	5.157
Figure IR304-2	1:100 Year Flood Diversion (from Volume 3B, Section 6, Figure 6-5).....	5.158
Figure IR304-3	1:10 Year Flood Diversion (from Volume 3B, Section 6, Figure 6-6).....	5.159
Figure IR308-1	Description for Box and Whisker Plots Used in Monthly Assessments	5.165
Figure IR308-2	Total Suspended Solids in the Upper Elbow River Mainstem Sites and at Glenmore Dam from 1979 to 2016	5.166
Figure IR308-3	Total Coliforms in the Upper Elbow River Mainstem Sites and at Glenmore Dam from 1979 to 2016.....	5.167
Figure IR308-4	Dissolved Phosphorus in the Upper Elbow River Mainstem Sites and at Glenmore Dam from 1979 to 2016	5.168
Figure IR308-5	Total Organic Carbon in the Upper Elbow River Mainstem Sites and at Glenmore Dam from 1979 to 2016	5.169
Figure IR308-6	Total Phosphorus in the Upper Elbow River Mainstem Sites and at Glenmore Dam from 1979 to 2016.....	5.170
Figure IR308-7	Total Kjeldahl Nitrogen in the Upper Elbow River Mainstem Sites and at Glenmore Dam from 1979 to 2016	5.171
Figure IR308-8	Total Aluminum in the Upper Elbow River Mainstem Sites and at Glenmore Dam from 1979 to 2016.....	5.172
Figure IR308-9	Total Arsenic in the Upper Elbow River Mainstem Sites and at Glenmore Dam from 1979 to 2016.....	5.173
Figure IR308-10	Total Boron in the Upper Elbow River Mainstem Sites and at Glenmore Dam from 1979 to 2016.....	5.174
Figure IR308-11	Total Chromium in the Upper Elbow River Mainstem Sites and at Glenmore Dam from 1979 to 2016.....	5.175
Figure IR308-12	Total Cobalt in the Upper Elbow River Mainstem Sites and at Glenmore Dam from 1979 to 2016.....	5.176
Figure IR308-13	Total Iron in the Upper Elbow River Mainstem Sites and at Glenmore Dam from 1979 to 2016.....	5.177
Figure IR308-14	Total Manganese in the Upper Elbow River Mainstem Sites and at Glenmore Dam from 1979 to 2016.....	5.178
Figure IR308-15	Total Nickel in the Upper Elbow River Mainstem Sites and at Glenmore Dam from 1979 to 2016.....	5.179
Figure IR308-16	Total Titanium in the Upper Elbow River Mainstem Sites and at Glenmore Dam from 1979 to 2016.....	5.180

**ALBERTA TRANSPORTATION SPRINGBANK OFF-STREAM RESERVOIR PROJECT
 RESPONSE TO NRCB AND AEP SUPPLEMENTAL INFORMATION REQUEST 1, JULY 28, 2018**

Figure IR308-17	Total Vanadium in the Upper Elbow River Mainstem Sites and at Glenmore Dam from 1979 to 2016.....	5.181
Figure IR308-18	Total Zinc in the Upper Elbow River Mainstem Sites and at Glenmore Dam from 1979 to 2016.....	5.182
Figure IR308-19	Temperature in the Upper Elbow River Mainstem Sites and at Glenmore Dam from 1979 to 2016.....	5.183
Figure IR308-20	Dissolved Oxygen in the Upper Elbow River Mainstem Sites and at Glenmore Dam from 1979 to 2016.....	5.184
Figure IR327-1	The 1:10 Year, 1:100 Year and Design Flood Hydrographs used in Modelling (from Volume B, Appendix J, Section 2, Figure 2-4).....	5.207
Figure IR341-1	Suspended Sediment Concentrations Associated with Release of Design-Flood Waters.....	5.223
Figure IR341-2	Suspended Sediment Concentrations Associated with the Release of 1:100 Year Flood Waters.....	5.224
Figure IR348-1	Suspended Sediment Concentration in Released Flood Water at Three Locations, after a Design Flood.....	5.238
Figure IR348-2	Suspended Sediment Concentration in Released Flood Water at Three Locations, after a 1:100 Year Flood.....	5.239
Figure IR348-3	Suspended Sediment Concentration in Released Flood Water at Three Locations, after a 1:10 Year Flood.....	5.240
Figure IR349-1	Elbow River Velocity Distribution at 50 m ³ /s.....	5.243
Figure IR349-2	Elbow River Velocity Distribution at 160 m ³ /s.....	5.244
Figure IR357-1	Fish and Fish Habitat Assessment Reaches and Benthic Invertebrate Sampling Sites.....	5.281
Figure IR363-1	Permanent and Temporary Features of the Project (from Volume 4, Appendix D, Figure 2-2).....	6.4
Figure IR368-1	Areas of Topsoil and Subsoil Salvage and Replacement in the PDA.....	6.17
Figure IR368-2	Agricultural Land Capability Classes for the Project Development Area and Local Assessment Area at Post-construction.....	6.20
Figure IR370-1	Topsoil Reclamation Suitability for the Project Development Area and Local Assessment Area at Post-construction.....	6.24
Figure IR370-2	Subsoil Reclamation Suitability for the Project Development Area and Local Assessment Area at Post-construction.....	6.25
Figure IR375-1	Location of Soil To Be Used For Project Construction.....	6.36
Figure IR384-1	Structures in the PDA.....	6.60
Figure IR385-1	Soil Map Units in the Project Development Area and Local Assessment Area, Area 1.....	6.64
Figure IR385-2	Soil Map Units in the Project Development Area and Local Assessment Area, Area 2.....	6.65
Figure IR385-3	Soil Map Units in the Project Development Area and Local Assessment Area, Area 3.....	6.66
Figure IR385-4	Soil Map Units in the Project Development Area and Local Assessment Area, Area 4.....	6.67



**ALBERTA TRANSPORTATION SPRINGBANK OFF-STREAM RESERVOIR PROJECT
 RESPONSE TO NRCB AND AEP SUPPLEMENTAL INFORMATION REQUEST 1, JULY 28, 2018**

Figure IR385-5	Soil Map Units in the Project Development Area and Local Assessment Area, Area 5	6.68
Figure IR385-6	Soil Map Units in the Project Development Area and Local Assessment Area, Area 6	6.69
Figure IR385-7	Soil Map Units in the Project Development Area and Local Assessment Area, Area 7	6.70
Figure IR385-8	Soil Map Units in the Project Development Area and Local Assessment Area, Area 8	6.71
Figure IR385-9	Soil Map Units in the Project Development Area and Local Assessment Area, Area 9	6.72
Figure IR385-10	Soil Map Units in the Project Development Area and Local Assessment Area, Area 10	6.73
Figure IR385-11	Soil Map Units in the Project Development Area and Local Assessment Area, Area 11	6.74
Figure IR404-1	Survey Locations where Plants were not Identifiable to Species Level	6.110
Figure IR408-1	Animal-Vehicle Collision Locations for Large-bodied Species	6.121
Figure IR411-1	Highway 22 Bridge over the Diversion Channel	6.127
Figure IR411-2	Unnamed Creek Culvert Crossing at Raised Intersection of Highway 22 and Springbank Road	6.128
Figure IR413-1	Proposed Location of Wildlife Friendly Fencing	6.131
Figure IR444-1	Maximum Predicted 1-hour Average Diesel Exhaust Particulate Concentrations (Base Case)	7.28
Figure IR444-2	Maximum Predicted 1-hour Average Diesel Exhaust Particulate Concentrations (Project Case)	7.29
Figure IR444-3	Maximum Predicted 1-hour Average Diesel Exhaust Particulate Concentrations (Application Case)	7.30
Figure IR456-1	Diversion Inlet Design	8.9
Figure IR457-1	Service Spillway Gate Rating Curve (24 m Wide Bay)	8.12
Figure IR457-2	Cross Section of Service Spillway	8.14
Figure IR460-1	Floodplain Berm Cross Section – October 2018	8.21
Figure IR462-1	Diversion Inlet Rating Curve	8.24
Figure IR463-1	Diversion Channel Typical Sections - March 2017	8.27
Figure IR464-1	Reservoir Inflow Routing for the Probable Maximum Flood with No Diversion Inlet Gate Closure	8.31
Figure IR465-1	Reservoir Drawdown from Full Service Level	8.33
Figure IR468-1	Seepage Gradients for Sta. 22+925	8.38
Figure IR468-2	Seepage Gradients for Sta. 23+175	8.39
Figure IR475-1	Preliminary Rating Curve for Low Level Outlet Works	8.50
Figure IR475-2	Cross Section of the Low Level Outlet Works - March 2017	8.51
Figure IR482-1	Permanent and Temporary Features of the Project	8.61
Figure IR487-1	Diversion Structure Overview - March 2017	8.67
Figure IR495-1	The Diversion System, North End of Floodplain Berm	8.80
Figure IR496-1	Elevation-Discharge Curves for a Single Bay in the Service Spillway	8.82

**ALBERTA TRANSPORTATION SPRINGBANK OFF-STREAM RESERVOIR PROJECT
 RESPONSE TO NRCB AND AEP SUPPLEMENTAL INFORMATION REQUEST 1, JULY 28, 2018**

Figure IR498-1	Conveyance Cross Section Locations within the PDA.....	8.85
Figure IR520-1	Comparison of PMF Estimates	8.109
Figure IR523-1	Slope Stability Calculation Locations within the PDA.....	8.121
Figure IR523-2	Earthwork Construction Zones	8.124
Figure IR524-1	Seepage Gradients for Sta. 22+925	8.128
Figure IR524-2	Seepage Gradients for Sta. 23+175	8.129
Figure IR527-1	Sediment Sample Locations in Elbow River.....	8.140
Figure IR527-2	Variation of Sediment Sample Particle Sizes	8.142
Figure IR527-3	Bedload Transport Rating Curves	8.143
Figure IR527-4	MPM Bedload Transport Rating Curves for Varying Particle Size	8.144
Figure IR528-1	Calculated Diversion Structure Hydrographs	8.147
Figure IR528-2	Modelling Output for the Diversion Structure Hydrographs	8.148
Figure IR530-1	Distribution of ABWRET-E Wetland Values in the LAA Using the Alberta Merged Inventory (Version 4.1)	9.8
Figure IR533-1	Pipeline Modifications within the PDA.....	9.14
Figure IR538-1	Outdated 395 m Distance of Tsuut'ina Nation Boundary from the Project Area	10.2
Figure IR538-2	Distances of Tsuut'ina Nation Boundary from Project Features.....	10.3
Figure IR547-1	Location of Hound's Tongue	10.11
Figure IR553-1	Suspended Sediment Concentration in the Low-level Outlet and its Confluence with Elbow River for the 1:100 Year Flood (revision to Volume 3B, Section 6, Figure 6-20)	10.15
Figure IR577-1	Suspended Sediment Concentration, Discharge Rating Curves (additional information added to Volume 4, Appendix J, Figure 3-12).....	10.27
Figure IR577-2	Total Dissolved Sediment Concentration, Discharge Rating Curves (additional information added to Volume 4, Appendix J, Figure 3-14).....	10.28
Figure IR589-1	Seasonal Variation Metrics of Total Suspended Sediment in the Elbow River Mainstem and in the Glenmore Reservoir from 1979 to 2016	10.34
Figure IR593-1	Monthly Total Suspended Sediment Seasonal Variability Metric (using data from 1979 to 2016).....	10.36

List of Appendices

Appendix IR2-1	Draft Principles for Future Land Use of the Proposed Springbank Off-Stream Reservoir Project
Appendix IR6-1	SR1 and MC1 Option Benefit/Cost Analysis – April 2019
Appendix IR14-1	MC1 Option Dam - Updated Conceptual Design Report
Appendix IR14-2	Springbank Off-Stream Reservoir Project – Conceptual Design Update
Appendix IR14-3	Canada Environmental Assessment Act Project Description for the Springbank Off Stream Reservoir Project
Appendix IR14-4	Hazard Classification of the Springbank Off Stream Reservoir Project
Appendix IR14-5	Dam Alignment and Toe Location Relative to the Elbow River of the Springbank Off Stream Reservoir Project
Appendix IR17-1	Updated Volume 3A, Sections 17.4 through 17.6
Appendix IR23-1	City of Calgary Flood Mitigation Options Assessment Report
Appendix IR35-1	Refined Cost Estimate Opinion, McLean Creek Dam
Appendix IR35-2	SR1 – Cost Estimate Opinion
Appendix IR42-1	Hydrogeology Technical Data Report Update
Appendix IR46-1	Draft Groundwater Monitoring Plan
Appendix IR91-1	Springbank Off-stream Reservoir (SR1) Fish Passage Design
Appendix IR153-1	Consolidated Record of Consultation Logs and Specific Concerns and Response Tables for Treaty 7 Nations
Appendix IR159-1	Specific Concerns and Response Table for Treaty 7 Nations Regarding Monitoring and Economic Opportunities
Appendix IR162-1	Rocky View County Noise Bylaw
Appendix IR274-1	Surface Water and Groundwater Licences and Allocations Within the Elbow River Watershed
Appendix IR302-1	Draft Surface Water Monitoring Plan
Appendix IR357-1	Fluvial Bull Trout Redd Locations on the Elbow River as Surveyed by Applied Aquatic Research in 2002, 2003, 2004, and 2006
Appendix IR360-1	Data Sheet for the Unnamed Tributary to the Elbow River (Tributary 1350)
Appendix IR361-1	Habitat Mapping of the Elbow River and Associated Reaches Within Proximity to the PDA
Appendix IR375-1	Limited Phase I Environmental Site Assessment
Appendix IR396-1	Properties of Promatrix
Appendix IR397-1	Certificate of Analysis for Report #R2314206 Version 1 – Final 2016/12/09
Appendix IR407-1	Draft Vegetation and Wetland Mitigation, Monitoring and Revegetation Plan
Appendix IR425-1	Draft Wildlife Mitigation and Monitoring Plan

**ALBERTA TRANSPORTATION SPRINGBANK OFF-STREAM RESERVOIR PROJECT
RESPONSE TO NRCB AND AEP SUPPLEMENTAL INFORMATION REQUEST 1, JULY 28, 2018**

- Appendix IR454-1 Physical Model Study of the Springbank Off-stream Storage
Project Diversion Structure on the Elbow River Report
- Appendix IR520-1 Draft Probable Maximum Flood Analysis Report